

## ARG41795 anti-PPP1R1A antibody

Package: 100 µl  
Store at: -20°C

### Summary

Product Description	Rabbit Polyclonal antibody recognizes PPP1R1A
Tested Reactivity	Hu, Ms, Rat
Tested Application	FACS, ICC/IF, IHC-P, IP, WB
Host	Rabbit
Clonality	Polyclonal
Isotype	IgG
Target Name	PPP1R1A
Species	Human
Immunogen	Synthetic peptide of Human PPP1R1A.
Conjugation	Un-conjugated
Alternate Names	Protein phosphatase 1 regulatory subunit 1A; IPP1; I1; IPP-1; I-1; Protein phosphatase inhibitor 1

### Application Instructions

Application table	Application	Dilution
	FACS	1:20
	ICC/IF	1:50 - 1:200
	IHC-P	1:50 - 1:200
	IP	1:50
	WB	1:5000 - 1:20000
Application Note	* The dilutions indicate recommended starting dilutions and the optimal dilutions or concentrations should be determined by the scientist.	
Positive Control	Rat brain	
Observed Size	~ 27 kDa	

### Properties

Form	Liquid
Purification	Affinity purified.
Buffer	PBS (pH 7.4), 150 mM NaCl, 0.02% Sodium azide and 50% Glycerol.
Preservative	0.02% Sodium azide
Stabilizer	50% Glycerol
Storage instruction	For continuous use, store undiluted antibody at 2-8°C for up to a week. For long-term storage, aliquot

and store at -20°C. Storage in frost free freezers is not recommended. Avoid repeated freeze/thaw cycles. Suggest spin the vial prior to opening. The antibody solution should be gently mixed before use.

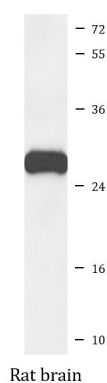
#### Note

For laboratory research only, not for drug, diagnostic or other use.

## Bioinformation

Gene Symbol	PPP1R1A
Gene Full Name	protein phosphatase 1, regulatory (inhibitor) subunit 1A
Function	Inhibitor of protein-phosphatase 1. This protein may be important in hormonal control of glycogen metabolism. Hormones that elevate intracellular cAMP increase I-1 activity in many tissues. I-1 activation may impose cAMP control over proteins that are not directly phosphorylated by PKA. Following a rise in intracellular calcium, I-1 is inactivated by calcineurin (or PP2B). Does not inhibit type-2 phosphatases. [UniProt]
Calculated Mw	19 kDa
PTM	Phosphorylation of Thr-35 is required for activity. [UniProt]

## Images



ARG41795 anti-PPP1R1A antibody WB image

Western blot: Rat brain lysate stained with ARG41795 anti-PPP1R1A antibody.