

## ARG41792 anti-MSI2 / Musashi 2 antibody

Package: 100 µl  
Store at: -20°C

### Summary

Product Description	Rabbit Polyclonal antibody recognizes MSI2 / Musashi 2
Tested Reactivity	Hu, Ms, Rat
Tested Application	FACS, ICC/IF, IHC-P, WB
Host	Rabbit
Clonality	Polyclonal
Isotype	IgG
Target Name	MSI2 / Musashi 2
Species	Human
Immunogen	Synthetic peptide of Human MSI2 / Musashi 2.
Conjugation	Un-conjugated
Alternate Names	Musashi-2; MSI2H; RNA-binding protein Musashi homolog 2

### Application Instructions

Application table	Application	Dilution
	FACS	1:30
	ICC/IF	1:50 - 1:200
	IHC-P	1:50 - 1:200
	WB	1:500 - 1:2000
Application Note	* The dilutions indicate recommended starting dilutions and the optimal dilutions or concentrations should be determined by the scientist.	
Positive Control	T-47D	
Observed Size	~ 37 kDa	

### Properties

Form	Liquid
Purification	Affinity purified.
Buffer	PBS (pH 7.4), 150 mM NaCl, 0.02% Sodium azide and 50% Glycerol.
Preservative	0.02% Sodium azide
Stabilizer	50% Glycerol
Storage instruction	For continuous use, store undiluted antibody at 2-8°C for up to a week. For long-term storage, aliquot and store at -20°C. Storage in frost free freezers is not recommended. Avoid repeated freeze/thaw cycles. Suggest spin the vial prior to opening. The antibody solution should be gently mixed before use.

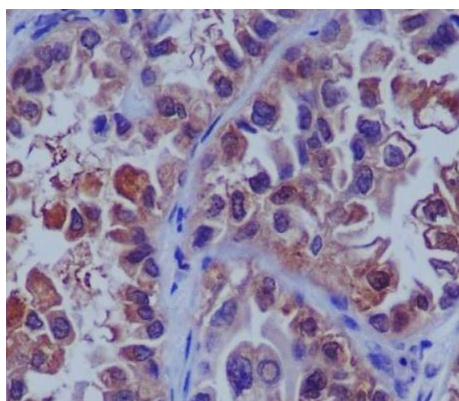
## Note

For laboratory research only, not for drug, diagnostic or other use.

## Bioinformation

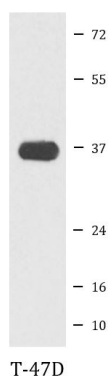
Gene Symbol	MSI2
Gene Full Name	musashi RNA-binding protein 2
Background	This gene encodes a protein containing two conserved tandem RNA recognition motifs. Similar proteins in other species function as RNA-binding proteins and play central roles in posttranscriptional gene regulation. Two transcript variants encoding distinct isoforms have been identified for this gene. [provided by RefSeq, Jul 2008]
Function	RNA binding protein that regulates the expression of target mRNAs at the translation level. May play a role in the proliferation and maintenance of stem cells in the central nervous system (By similarity). [UniProt]
Calculated Mw	35 kDa
PTM	Phosphorylated. [UniProt]
Cellular Localization	Cytoplasm. Note=Associated with polysomes. [UniProt]

## Images



ARG41792 anti-MSI2 / Musashi 2 antibody IHC-P image

Immunohistochemistry: Paraffin-embedded Human lung carcinoma tissue stained with ARG41792 anti-MSI2 / Musashi 2 antibody.



ARG41792 anti-MSI2 / Musashi 2 antibody WB image

Western blot: T-47D cell lysate stained with ARG41792 anti-MSI2 / Musashi 2 antibody.