

ARG41648 anti-DSG1 / Desmoglein 1 antibody

Package: 100 µl
Store at: -20°C

Summary

Product Description	Rabbit Polyclonal antibody recognizes DSG1 / Desmoglein 1
Tested Reactivity	Hu, Ms, Rat
Tested Application	IHC-P, WB
Host	Rabbit
Clonality	Polyclonal
Isotype	IgG
Target Name	DSG1 / Desmoglein 1
Species	Human
Immunogen	Synthetic peptide of Human DSG1 / Desmoglein 1.
Conjugation	Un-conjugated
Alternate Names	PPKS1; Desmoglein-1; SPPK1; DGI; EPKHIA; CDHF4; DG1; Desmosomal glycoprotein 1; DSG; Cadherin family member 4; Pemphigus foliaceus antigen; EPKHE

Application Instructions

Application table	Application	Dilution
	IHC-P	1:50 - 1:200
	WB	1:500 - 1:2000
Application Note	* The dilutions indicate recommended starting dilutions and the optimal dilutions or concentrations should be determined by the scientist.	
Positive Control	Human skin	
Observed Size	~ 150 kDa	

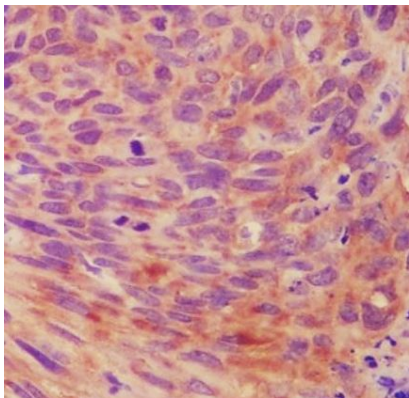
Properties

Form	Liquid
Purification	Affinity purified.
Buffer	PBS (pH 7.4), 150 mM NaCl, 0.02% Sodium azide and 50% Glycerol.
Preservative	0.02% Sodium azide
Stabilizer	50% Glycerol
Storage instruction	For continuous use, store undiluted antibody at 2-8°C for up to a week. For long-term storage, aliquot and store at -20°C. Storage in frost free freezers is not recommended. Avoid repeated freeze/thaw cycles. Suggest spin the vial prior to opening. The antibody solution should be gently mixed before use.
Note	For laboratory research only, not for drug, diagnostic or other use.

Bioinformation

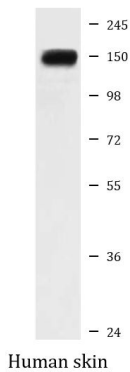
Gene Symbol	DSG1
Gene Full Name	desmoglein 1
Background	This gene encodes a member of the desmoglein protein subfamily. Desmogleins, along with desmocollins, are cadherin-like transmembrane glycoproteins that are major components of the desmosome. Desmosomes are cell-cell junctions that help resist shearing forces and are found in high concentrations in cells subject to mechanical stress. This gene is found in a cluster with other desmoglein family members on chromosome 18. The encoded protein has been identified as a target of auto-antibodies in the autoimmune skin blistering disease pemphigus foliaceus. Disruption of this gene has also been associated with the skin diseases palmoplantar keratoderma and erythroderma. [provided by RefSeq, Feb 2015]
Function	Component of intercellular desmosome junctions. Involved in the interaction of plaque proteins and intermediate filaments mediating cell-cell adhesion. [UniProt]
Calculated Mw	114 kDa
Cellular Localization	Cell membrane; Single-pass type I membrane protein. Cell junction, desmosome. [UniProt]

Images



ARG41648 anti-DSG1 / Desmoglein 1 antibody IHC-P image

Immunohistochemistry: Paraffin-embedded Human cervix cancer tissue stained with ARG41648 anti-DSG1 / Desmoglein 1 antibody.



ARG41648 anti-DSG1 / Desmoglein 1 antibody WB image

Western blot: Human skin lysate stained with ARG41648 anti-DSG1 / Desmoglein 1 antibody.