

## ARG41478 anti-Cytochrome P450 2E1 antibody

Package: 100 µl  
Store at: -20°C

### Summary

Product Description	Rabbit Polyclonal antibody recognizes Cytochrome P450 2E1
Tested Reactivity	Hu, Ms, Rat
Tested Application	ICC/IF, IHC-P, WB
Host	Rabbit
Clonality	Polyclonal
Isotype	IgG
Target Name	Cytochrome P450 2E1
Species	Human
Immunogen	Recombinant fusion protein corresponding to aa. 234-493 of Human Cytochrome P450 2E1 (NP_000764.1).
Conjugation	Un-conjugated
Alternate Names	EC 1.14.13.n7; Cytochrome P450 2E1; Cytochrome P450-J; EC 1.14.13.-; P450C2E; CYP11E1; CYP2E; 4-nitrophenol 2-hydroxylase; P450-J; CPE1

### Application Instructions

Application table	Application	Dilution
	ICC/IF	1:50 - 1:200
	IHC-P	1:50 - 1:200
	WB	1:500 - 1:2000
Application Note	* The dilutions indicate recommended starting dilutions and the optimal dilutions or concentrations should be determined by the scientist.	
Positive Control	Mouse kidney	
Observed Size	55 kDa	

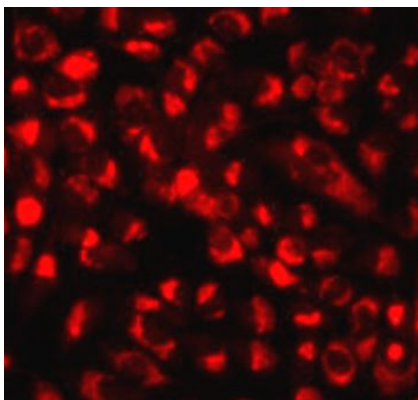
### Properties

Form	Liquid
Purification	Affinity purified.
Buffer	PBS (pH 7.3), 0.02% Sodium azide and 50% Glycerol.
Preservative	0.02% Sodium azide
Stabilizer	50% Glycerol
Storage instruction	For continuous use, store undiluted antibody at 2-8°C for up to a week. For long-term storage, aliquot and store at -20°C. Storage in frost free freezers is not recommended. Avoid repeated freeze/thaw cycles. Suggest spin the vial prior to opening. The antibody solution should be gently mixed before use.

## Bioinformation

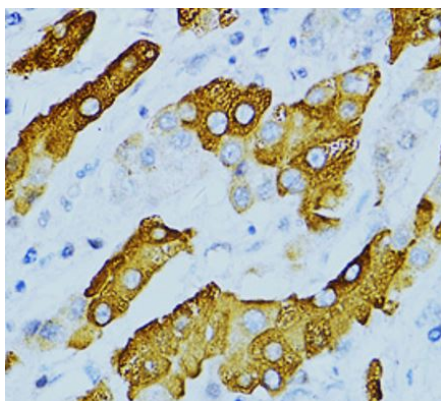
Gene Symbol	CYP2E1
Gene Full Name	cytochrome P450, family 2, subfamily E, polypeptide 1
Background	This gene encodes a member of the cytochrome P450 superfamily of enzymes. The cytochrome P450 proteins are monooxygenases which catalyze many reactions involved in drug metabolism and synthesis of cholesterol, steroids and other lipids. This protein localizes to the endoplasmic reticulum and is induced by ethanol, the diabetic state, and starvation. The enzyme metabolizes both endogenous substrates, such as ethanol, acetone, and acetal, as well as exogenous substrates including benzene, carbon tetrachloride, ethylene glycol, and nitrosamines which are premutagens found in cigarette smoke. Due to its many substrates, this enzyme may be involved in such varied processes as gluconeogenesis, hepatic cirrhosis, diabetes, and cancer. [provided by RefSeq, Jul 2008]
Function	Metabolizes several precarcinogens, drugs, and solvents to reactive metabolites. Inactivates a number of drugs and xenobiotics and also bioactivates many xenobiotic substrates to their hepatotoxic or carcinogenic forms. [UniProt]
Calculated Mw	57 kDa
Cellular Localization	Endoplasmic reticulum membrane; Peripheral membrane protein. Microsome membrane; Peripheral membrane protein. [UniProt]

## Images



ARG41478 anti-Cytochrome P450 2E1 antibody ICC/IF image

Immunofluorescence: HeLa cells stained with ARG41478 anti-Cytochrome P450 2E1 antibody.



ARG41478 anti-Cytochrome P450 2E1 antibody IHC-P image

Immunohistochemistry: Paraffin-embedded Human liver cancer tissue stained with ARG41478 anti-Cytochrome P450 2E1 antibody at 1:100 dilution.

ARG41478 anti-Cytochrome P450 2E1 antibody WB image

Western blot: 25 µg of Mouse kidney lysate stained with ARG41478 anti-Cytochrome P450 2E1 antibody at 1:1000 dilution.

