

## ARG41471 anti-Glycophorin C antibody

Package: 100 µl  
Store at: -20°C

### Summary

Product Description	Rabbit Polyclonal antibody recognizes Glycophorin C
Tested Reactivity	Hu
Tested Application	FACS, ICC/IF, IHC-P, IP, WB
Host	Rabbit
Clonality	Polyclonal
Isotype	IgG
Target Name	Glycophorin C
Species	Human
Immunogen	Synthetic peptide of Human Glycophorin C.
Conjugation	Un-conjugated
Alternate Names	Glycophorin-D; CD236R; GPD; Glycophorin-C; Glycoprotein beta; Glycoconnectin; GPC; PAS-2; CD antigen CD236; GE; CD236; Sialoglycoprotein D; GYPD; PAS-2'

### Application Instructions

Application table	Application	Dilution
	FACS	1:50
	ICC/IF	1:50 - 1:200
	IHC-P	1:50 - 1:200
	IP	1:50
	WB	1:500 - 1:2000
Application Note	* The dilutions indicate recommended starting dilutions and the optimal dilutions or concentrations should be determined by the scientist.	
Positive Control	K562	
Observed Size	~ 39 kDa	

### Properties

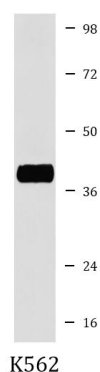
Form	Liquid
Purification	Affinity purified.
Buffer	PBS (pH 7.4), 150 mM NaCl, 0.02% Sodium azide and 50% Glycerol.
Preservative	0.02% Sodium azide
Stabilizer	50% Glycerol

Storage instruction	For continuous use, store undiluted antibody at 2-8°C for up to a week. For long-term storage, aliquot and store at -20°C. Storage in frost free freezers is not recommended. Avoid repeated freeze/thaw cycles. Suggest spin the vial prior to opening. The antibody solution should be gently mixed before use.
Note	For laboratory research only, not for drug, diagnostic or other use.

## Bioinformation

Gene Symbol	GYPC
Gene Full Name	glycophorin C (Gerbich blood group)
Background	Glycophorin C (GYPC) is an integral membrane glycoprotein. It is a minor species carried by human erythrocytes, but plays an important role in regulating the mechanical stability of red cells. A number of glycophorin C mutations have been described. The Gerbich and Yus phenotypes are due to deletion of exon 3 and 2, respectively. The Webb and Duch antigens, also known as glycophorin D, result from single point mutations of the glycophorin C gene. The glycophorin C protein has very little homology with glycophorins A and B. Alternate splicing results in multiple transcript variants. [provided by RefSeq, Feb 2012]
Function	This protein is a minor sialoglycoprotein in human erythrocyte membranes. The blood group Gerbich antigens and receptors for Plasmodium falciparum merozoites are most likely located within the extracellular domain. Glycophorin-C plays an important role in regulating the stability of red cells. [UniProt]
Calculated Mw	14 kDa
PTM	O-glycosylated with core 1 or possibly core 8 glycans. [UniProt]
Cellular Localization	Cell membrane; Single-pass type III membrane protein. Note=Linked to the membrane via band 4.1. [UniProt]

## Images



ARG41471 anti-Glycophorin C antibody WB image

Western blot: K562 cell lysate stained with ARG41471 anti-Glycophorin C antibody.