

ARG41450 anti-GH1 / Growth hormone antibody

Package: 100 µl
Store at: -20°C

Summary

Product Description	Rabbit Polyclonal antibody recognizes GH1 / Growth hormone
Tested Reactivity	Hu
Tested Application	IHC-P, IP, WB
Host	Rabbit
Clonality	Polyclonal
Isotype	IgG
Target Name	GH1 / Growth hormone
Species	Human
Immunogen	Synthetic peptide of Human GH1 / Growth hormone.
Conjugation	Un-conjugated
Alternate Names	GH-N; Somatotropin; IGHD1B; Growth hormone; Growth hormone 1; Pituitary growth hormone; GHN; hGH-N; GH

Application Instructions

Application table	Application	Dilution
	IHC-P	1:50 - 1:200
	IP	1:20
	WB	1:500 - 1:2000
Application Note	* The dilutions indicate recommended starting dilutions and the optimal dilutions or concentrations should be determined by the scientist.	
Positive Control	Human placenta	
Observed Size	~ 25 kDa	

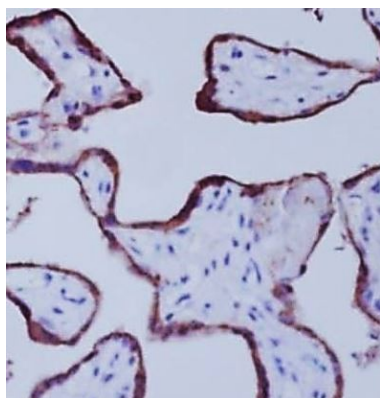
Properties

Form	Liquid
Purification	Affinity purified.
Buffer	PBS (pH 7.4), 150 mM NaCl, 0.02% Sodium azide and 50% Glycerol.
Preservative	0.02% Sodium azide
Stabilizer	50% Glycerol
Storage instruction	For continuous use, store undiluted antibody at 2-8°C for up to a week. For long-term storage, aliquot and store at -20°C. Storage in frost free freezers is not recommended. Avoid repeated freeze/thaw cycles. Suggest spin the vial prior to opening. The antibody solution should be gently mixed before use.

Bioinformation

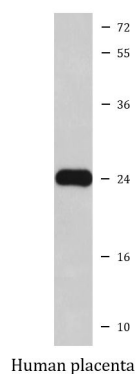
Gene Symbol	GH1
Gene Full Name	growth hormone 1
Background	<p>The protein encoded by this gene is a member of the somatotropin/prolactin family of hormones which play an important role in growth control. The gene, along with four other related genes, is located at the growth hormone locus on chromosome 17 where they are interspersed in the same transcriptional orientation; an arrangement which is thought to have evolved by a series of gene duplications. The five genes share a remarkably high degree of sequence identity. Alternative splicing generates additional isoforms of each of the five growth hormones, leading to further diversity and potential for specialization. This particular family member is expressed in the pituitary but not in placental tissue as is the case for the other four genes in the growth hormone locus. Mutations in or deletions of the gene lead to growth hormone deficiency and short stature. [provided by RefSeq, Jul 2008]</p>
Function	<p>Plays an important role in growth control. Its major role in stimulating body growth is to stimulate the liver and other tissues to secrete IGF-1. It stimulates both the differentiation and proliferation of myoblasts. It also stimulates amino acid uptake and protein synthesis in muscle and other tissues. [UniProt]</p>
Calculated Mw	25 kDa
Cellular Localization	Secreted. [UniProt]

Images



ARG41450 anti-GH1 / Growth hormone antibody IHC-P image

Immunohistochemistry: Paraffin-embedded Human placenta tissue stained with ARG41450 anti-GH1 / Growth hormone antibody.



ARG41450 anti-GH1 / Growth hormone antibody WB image

Western blot: Human placenta lysate stained with ARG41450 anti-GH1 / Growth hormone antibody.