

## ARG41420 anti-Serum amyloid P component antibody

Package: 50 µg  
Store at: -20°C

### Summary

Product Description	Rabbit Polyclonal antibody recognizes Serum amyloid P component
Tested Reactivity	Ms
Tested Application	IHC-P, WB
Host	Rabbit
Clonality	Polyclonal
Isotype	IgG
Target Name	Serum amyloid P component
Species	Mouse
Immunogen	Recombinant protein corresponding to Q21-D224 of Mouse Serum amyloid P component.
Conjugation	Un-conjugated
Alternate Names	9.5S alpha-1-glycoprotein; HEL-S-92n; PTX2; Serum amyloid P-component; 1-203; SAP

### Application Instructions

Application table	Application	Dilution
	IHC-P	1:200 - 1:1000
	WB	1:500 - 1:2000
Application Note	IHC-P: Antigen Retrieval: Heat mediation was performed in Citrate buffer (pH 6.0, epitope retrieval solution) for 20 min. * The dilutions indicate recommended starting dilutions and the optimal dilutions or concentrations should be determined by the scientist.	
Observed Size	~ 25 kDa	

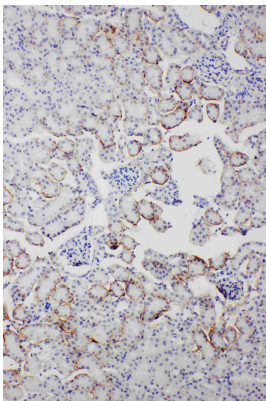
### Properties

Form	Liquid
Purification	Affinity purification with immunogen.
Buffer	0.2% Na <sub>2</sub> HPO <sub>4</sub> , 0.9% NaCl and 0.05% Sodium azide.
Preservative	0.05% Sodium azide
Concentration	0.5 mg/ml
Storage instruction	For continuous use, store undiluted antibody at 2-8°C for up to a week. For long-term storage, aliquot and store at -20°C or below. Storage in frost free freezers is not recommended. Avoid repeated freeze/thaw cycles. Suggest spin the vial prior to opening. The antibody solution should be gently mixed before use.
Note	For laboratory research only, not for drug, diagnostic or other use.

Bioinformation

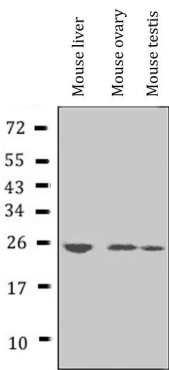
Gene Symbol	APCS
Gene Full Name	amyloid P component, serum
Background	The protein encoded by this gene is a glycoprotein, belonging to the pentraxin family of proteins, which has a characteristic pentameric organization. These family members have considerable sequence homology which is thought to be the result of gene duplication. The binding of the encoded protein to proteins in the pathological amyloid cross-beta fold suggests its possible role as a chaperone. This protein is also thought to control the degradation of chromatin. It has been demonstrated that this protein binds to apoptotic cells at an early stage, which raises the possibility that it is involved in dealing with apoptotic cells in vivo. [provided by RefSeq, Sep 2008]
Function	Can interact with DNA and histones and may scavenge nuclear material released from damaged circulating cells. May also function as a calcium-dependent lectin. [UniProt]
Calculated Mw	25 kDa
PTM	N-glycosylated with a complex biantennary oligosaccharide chain with a sialic acid at the end (disialo-SAP). Monosialo-SAP as well as asialo-SAP are also detected (PubMed:15174148). [UniProt]
Cellular Localization	Secreted. [UniProt]

Images



ARG41420 anti-Serum amyloid P component antibody IHC-P image

Immunohistochemistry: Paraffin-embedded Mouse kidney tissue. Antigen Retrieval: Heat mediation was performed in Citrate buffer (pH 6.0, epitope retrieval solution) for 20 min. The tissue section was blocked with 10% goat serum. The tissue section was then stained with ARG41420 anti-Serum amyloid P component antibody at 1 µg/ml dilution, overnight at 4°C.



ARG41420 anti-Serum amyloid P component antibody WB image

Western blot: 50 µg of samples under reducing conditions. Mouse liver, Mouse ovary and Mouse testis lysates stained with ARG41420 anti-Serum amyloid P component antibody at 0.5 µg/ml dilution, overnight at 4°C.