

ARG41416 anti-Lymphotoxin alpha / TNF beta antibody

Package: 50 µg
Store at: -20°C

Summary

Product Description	Rabbit Polyclonal antibody recognizes Lymphotoxin alpha / TNF beta
Tested Reactivity	Hu
Predict Reactivity	Hm
Tested Application	WB
Host	Rabbit
Clonality	Polyclonal
Isotype	IgG
Target Name	Lymphotoxin alpha / TNF beta
Species	Human
Immunogen	Synthetic peptide corresponding to aa. 73-88 of Human TNF beta. (KQNSLLWRANTDRAFL)
Conjugation	Un-conjugated
Alternate Names	LTA; Lymphotoxin Alpha; TNFSF1; TNFB; LT; Tumor Necrosis Factor Ligand Superfamily Member 1; Lymphotoxin-Alpha; LT-Alpha; TNF-Beta; Lymphotoxin Alpha (TNF Superfamily, Member 1); Tumor Necrosis Factor Ligand 1E; Tumor Necrosis Factor Beta; TNF Superfamily, Member 1; TNF Superfamily Member 1; TNLG1E

Application Instructions

Application table	<table> <tr> <th>Application</th><th>Dilution</th></tr> <tr> <td>WB</td><td>1:500 - 1:2000</td></tr> </table>	Application	Dilution	WB	1:500 - 1:2000
Application	Dilution				
WB	1:500 - 1:2000				
Application Note	* The dilutions indicate recommended starting dilutions and the optimal dilutions or concentrations should be determined by the scientist.				
Observed Size	~ 17 kDa				

Properties

Form	Liquid
Purification	Affinity purification with immunogen.
Buffer	0.2% Na ₂ HPO ₄ , 0.9% NaCl, 0.05% Thimerosal, 0.05% Sodium azide and 5% BSA.
Preservative	0.05% Thimerosal and 0.05% Sodium azide
Stabilizer	5% BSA
Concentration	0.5 mg/ml
Storage instruction	For continuous use, store undiluted antibody at 2-8°C for up to a week. For long-term storage, aliquot and store at -20°C or below. Storage in frost free freezers is not recommended. Avoid repeated freeze/thaw cycles. Suggest spin the vial prior to opening. The antibody solution should be gently mixed

before use.

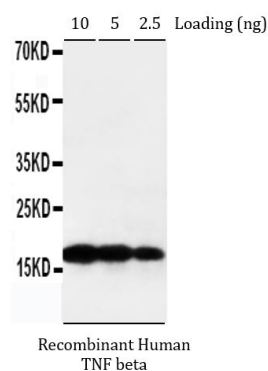
Note

For laboratory research only, not for drug, diagnostic or other use.

Bioinformation

Gene Symbol	LTA
Gene Full Name	lymphotoxin alpha
Background	The encoded protein, a member of the tumor necrosis factor family, is a cytokine produced by lymphocytes. The protein is highly inducible, secreted, and forms heterotrimers with lymphotoxin-beta which anchor lymphotoxin-alpha to the cell surface. This protein also mediates a large variety of inflammatory, immunostimulatory, and antiviral responses, is involved in the formation of secondary lymphoid organs during development and plays a role in apoptosis. Genetic variations in this gene are associated with susceptibility to leprosy type 4, myocardial infarction, non-Hodgkin's lymphoma, and psoriatic arthritis. Alternatively spliced transcript variants have been observed for this gene. [provided by RefSeq, Jul 2012]
Function	Cytokine that in its homotrimeric form binds to TNFRSF1A/TNFR1, TNFRSF1B/TNFR and TNFRSF14/HVEM. In its heterotrimeric form with LTB binds to TNFRSF3/LTBR. Lymphotoxin is produced by lymphocytes and cytotoxic for a wide range of tumor cells in vitro and in vivo. [UniProt]
Calculated Mw	22 kDa
Cellular Localization	Secreted. Membrane. Note=The homotrimer is secreted. The heterotrimer is membrane-associated. [UniProt]

Images



ARG41416 anti-Lymphotoxin alpha / TNF beta antibody WB image

Western blot: 10 ng, 5 ng and 2.5 ng of Recombinant Human TNF beta protein stained with ARG41416 anti-Lymphotoxin alpha / TNF beta antibody.