

ARG41342 anti-ARPC5L antibody

Package: 100 µl
Store at: -20°C

Summary

Product Description	Rabbit Polyclonal antibody recognizes ARPC5L
Tested Reactivity	Hu, Ms, Rat
Tested Application	IHC-P, WB
Host	Rabbit
Clonality	Polyclonal
Isotype	IgG
Target Name	ARPC5L
Species	Human
Immunogen	Recombinant fusion protein corresponding to aa. 1-100 of Human ARPC5L (NP_112240.1).
Conjugation	Un-conjugated
Alternate Names	Actin-related protein 2/3 complex subunit 5-like protein; Arp2/3 complex 16 kDa subunit 2; ARC16-2

Application Instructions

Application table	Application	Dilution
	IHC-P	1:50 - 1:200
	WB	1:500 - 1:2000
Application Note	* The dilutions indicate recommended starting dilutions and the optimal dilutions or concentrations should be determined by the scientist.	
Positive Control	HeLa	
Observed Size	17 kDa	

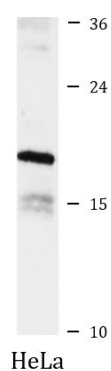
Properties

Form	Liquid
Purification	Affinity purified.
Buffer	PBS (pH 7.3), 0.02% Sodium azide and 50% Glycerol.
Preservative	0.02% Sodium azide
Stabilizer	50% Glycerol
Storage instruction	For continuous use, store undiluted antibody at 2-8°C for up to a week. For long-term storage, aliquot and store at -20°C. Storage in frost free freezers is not recommended. Avoid repeated freeze/thaw cycles. Suggest spin the vial prior to opening. The antibody solution should be gently mixed before use.
Note	For laboratory research only, not for drug, diagnostic or other use.

Bioinformation

Gene Symbol	ARPC5L
Gene Full Name	actin related protein 2/3 complex, subunit 5-like
Function	May function as component of the Arp2/3 complex which is involved in regulation of actin polymerization and together with an activating nucleation-promoting factor (NPF) mediates the formation of branched actin networks. [UniProt]
Calculated Mw	17 kDa
Cellular Localization	Cytoplasm, cytoskeleton. [UniProt]

Images



ARG41342 anti-ARPC5L antibody WB image

Western blot: 25 µg of HeLa cell lysate stained with ARG41342 anti-ARPC5L antibody at 1:1000 dilution.