

ARG41323 anti-RSPO1 / R spondin 1 antibody

Package: 50 µg
Store at: -20°C

Summary

Product Description	Rabbit Polyclonal antibody recognizes RSPO1 / R spondin 1
Tested Reactivity	Hu, Ms
Predict Reactivity	Rat
Tested Application	IHC-P, WB
Specificity	At least three isoforms of RSPO1 are known to exist. This antibody will detect the largest and smallest isoforms. RSPO1 antibody will not cross-react with other RSPO family members.
Host	Rabbit
Clonality	Polyclonal
Isotype	IgG
Target Name	RSPO1 / R spondin 1
Species	Human
Immunogen	A 16 amino acid synthetic peptide within the first 50 amino acids of Human RSPO1.
Conjugation	Un-conjugated
Alternate Names	hRspo1; Roof plate-specific spondin-1; R-spondin-1; RSPO; CRISTIN3

Application Instructions

Application table	Application	Dilution
	IHC-P	2 - 20 µg/ml
	WB	1 - 4 µg/ml
Application Note	* The dilutions indicate recommended starting dilutions and the optimal dilutions or concentrations should be determined by the scientist.	
Positive Control	Human heart	
Observed Size	~ 26 kDa	

Properties

Form	Liquid
Purification	Affinity purification with immunogen.
Buffer	PBS and 0.02% Sodium azide.
Preservative	0.02% Sodium azide
Concentration	1 mg/ml
Storage instruction	For continuous use, store undiluted antibody at 2-8°C for up to a week. For long-term storage, aliquot and store at -20°C or below. Storage in frost free freezers is not recommended. Avoid repeated

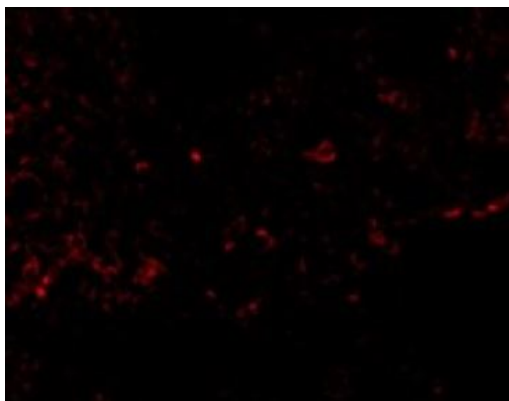
freeze/thaw cycles. Suggest spin the vial prior to opening. The antibody solution should be gently mixed before use.

Note For laboratory research only, not for drug, diagnostic or other use.

Bioinformation

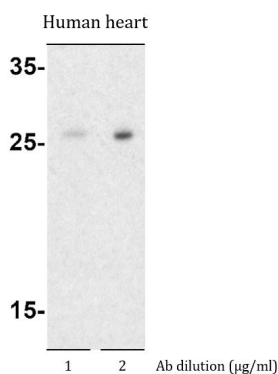
Gene Symbol	RSPO1
Gene Full Name	R-spondin 1
Background	This gene encodes a secreted activator protein with two cysteine-rich, furin-like domains and one thrombospondin type 1 domain. The encoded protein is a ligand for leucine-rich repeat-containing G-protein coupled receptors (LGR proteins) and positively regulates the Wnt signaling pathway. In mice, the protein induces the rapid onset of crypt cell proliferation and increases intestinal epithelial healing, providing a protective effect against chemotherapy-induced adverse effects. Alternative splicing results in multiple transcript variants. [provided by RefSeq, Apr 2014]
Function	Activator of the canonical Wnt signaling pathway by acting as a ligand for LGR4-6 receptors. Upon binding to LGR4-6 (LGR4, LGR5 or LGR6), LGR4-6 associate with phosphorylated LRP6 and frizzled receptors that are activated by extracellular Wnt receptors, triggering the canonical Wnt signaling pathway to increase expression of target genes. Also regulates the canonical Wnt/beta-catenin-dependent pathway and non-canonical Wnt signaling by acting as an inhibitor of ZNRF3, an important regulator of the Wnt signaling pathway. Acts as a ligand for frizzled FZD8 and LRP6. May negatively regulate the TGF-beta pathway. Has a essential roles in ovary determination. [UniProt]
Calculated Mw	29 kDa
Cellular Localization	Secreted. Nucleus. Note=Seems to mainly localize to nucleoli. [UniProt]

Images



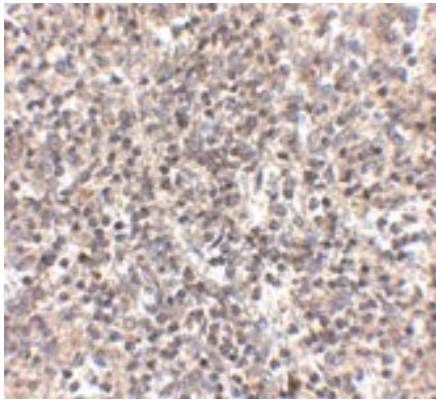
ARG41323 anti-RSPO1 / R spondin 1 antibody IHC-P image

Immunohistochemistry: Paraffin-embedded Human spleen tissue stained with ARG41323 anti-RSPO1 / R spondin 1 antibody at 20 µg/ml dilution.



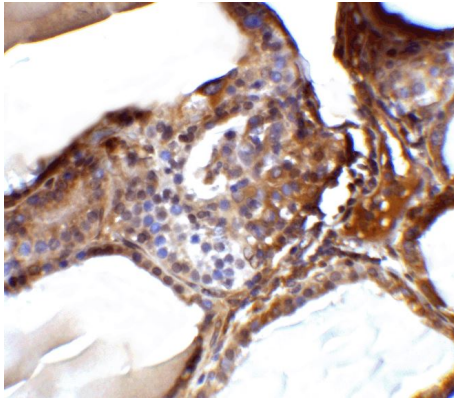
ARG41323 anti-RSPO1 / R spondin 1 antibody WB image

Western blot: Human heart lysate stained with ARG41323 anti-RSPO1 / R spondin 1 antibody at 1 and 2 µg/ml dilution.



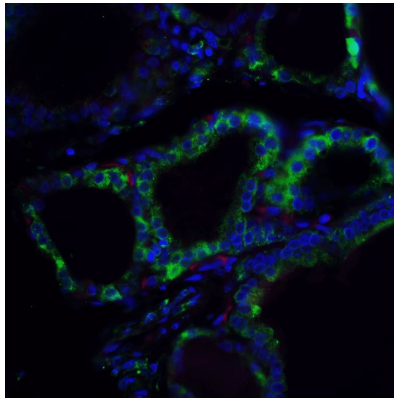
ARG41323 anti-RSPO1 / R spondin 1 antibody IHC-P image

Immunohistochemistry: Paraffin-embedded Human spleen tissue stained with ARG41323 anti-RSPO1 / R spondin 1 antibody at 2.5 µg/ml dilution.



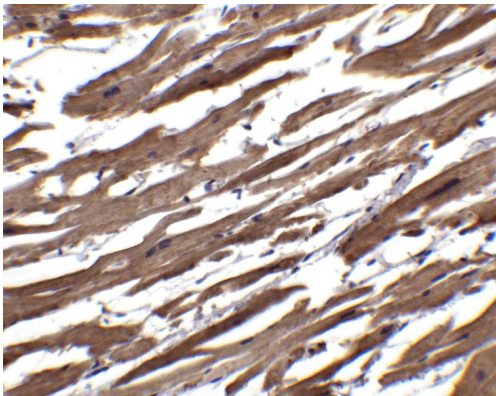
ARG41323 anti-RSPO1 / R spondin 1 antibody IHC-P image

Immunohistochemistry: Paraffin-embedded Human spleen tissue stained with ARG41323 anti-RSPO1 / R spondin 1 antibody at 5 µg/ml dilution.



ARG41323 anti-RSPO1 / R spondin 1 antibody IHC-P image

Immunohistochemistry: Paraffin-embedded Human spleen tissue stained with ARG41323 anti-RSPO1 / R spondin 1 antibody (green) at 5 µg/ml dilution. DAPI (blue) for nuclear staining. Phalloidin staining (red).



ARG41323 anti-RSPO1 / R spondin 1 antibody IHC-P image

Immunohistochemistry: Paraffin-embedded Human heart tissue stained with ARG41323 anti-RSPO1 / R spondin 1 antibody at 2.5 µg/ml dilution.