

## ARG41303 anti-Recoverin antibody

Package: 50 µl  
Store at: -20°C

### Summary

Product Description	Rabbit Polyclonal antibody recognizes Recoverin
Tested Reactivity	Hu
Predict Reactivity	Ms, Rat, Cow, Dog, Gpig, Hrs, Rb, Zfsh
Tested Application	WB
Host	Rabbit
Clonality	Polyclonal
Isotype	IgG
Target Name	Recoverin
Species	Human
Immunogen	Synthetic peptide around the N-terminal region of Human Recoverin. (within the following region: GNSKSGALSKEILEELQLNTKFSEELCSWYQSFLKDCPTGRITQQQFQS)
Conjugation	Un-conjugated
Alternate Names	Recoverin; Cancer-associated retinopathy protein; RCV1; Protein CAR

### Application Instructions

Predict Reactivity Note	Predicted Homology Based On Immunogen Sequence: Cow: 100%; Dog: 100%; Guinea pig: 93%; Horse: 100%; Mouse: 100%; Rabbit: 93%; Rat: 100%; Zebrafish: 85%				
Application table	<table> <tr> <th>Application</th><th>Dilution</th></tr> <tr> <td>WB</td><td>0.2 - 1 µg/ml</td></tr> </table>	Application	Dilution	WB	0.2 - 1 µg/ml
Application	Dilution				
WB	0.2 - 1 µg/ml				
Application Note	* The dilutions indicate recommended starting dilutions and the optimal dilutions or concentrations should be determined by the scientist.				
Positive Control	Human placenta				
Observed Size	23 kDa				

### Properties

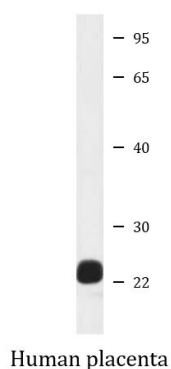
Form	Liquid
Purification	Affinity purified.
Buffer	PBS, 0.09% (w/v) Sodium azide and 2% Sucrose.
Preservative	0.09% (w/v) Sodium azide
Stabilizer	2% Sucrose
Concentration	Batch dependent: 0.5 - 1 mg/ml

Storage instruction	For continuous use, store undiluted antibody at 2-8°C for up to a week. For long-term storage, aliquot and store at -20°C or below. Storage in frost free freezers is not recommended. Avoid repeated freeze/thaw cycles. Suggest spin the vial prior to opening. The antibody solution should be gently mixed before use.
Note	For laboratory research only, not for drug, diagnostic or other use.

## Bioinformation

Gene Symbol	RCVRN
Gene Full Name	recoverin
Background	This gene encodes a member of the recoverin family of neuronal calcium sensors. The encoded protein contains three calcium-binding EF-hand domains and may prolong the termination of the phototransduction cascade in the retina by blocking the phosphorylation of photo-activated rhodopsin. Recoverin may be the antigen responsible for cancer-associated retinopathy. [provided by RefSeq, Jul 2008]
Function	Seems to be implicated in the pathway from retinal rod guanylate cyclase to rhodopsin. May be involved in the inhibition of the phosphorylation of rhodopsin in a calcium-dependent manner. The calcium-bound recoverin prolongs the photoresponse. [UniProt]
Calculated Mw	23 kDa

## Images



ARG41303 anti-Recoverin antibody WB image

Western blot: Human placenta lysate stained with ARG41303 anti-Recoverin antibody at 0.2 - 1 µg/ml dilution.