

## ARG41298 anti-Radixin antibody

Package: 100 µl  
Store at: -20°C

### Summary

Product Description	Rabbit Polyclonal antibody recognizes Radixin
Tested Reactivity	Hu, Ms, Rat
Tested Application	FACS, ICC/IF, IHC-P, IP, WB
Host	Rabbit
Clonality	Polyclonal
Isotype	IgG
Target Name	Radixin
Species	Human
Immunogen	Synthetic peptide within 400-410 a.a. of Human Radixin.
Conjugation	Un-conjugated
Alternate Names	Radixin; DFNB24

### Application Instructions

Application table	Application	Dilution
	FACS	1:100
	ICC/IF	1:50 - 1:200
	IHC-P	1:50 - 1:200
	IP	1:100
	WB	1:5000 - 1:10000
Application Note	* The dilutions indicate recommended starting dilutions and the optimal dilutions or concentrations should be determined by the scientist.	
Observed Size	~ 80 kDa	

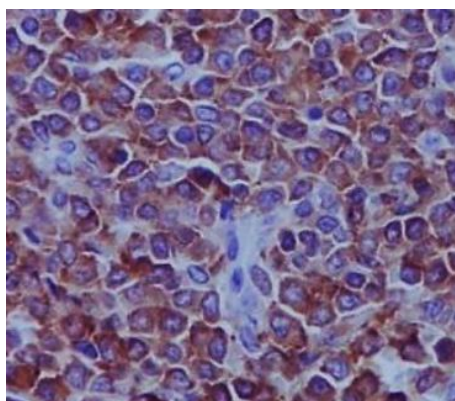
### Properties

Form	Liquid
Purification	Affinity purified
Buffer	PBS (pH 7.4), 150 mM NaCl, 0.02% Sodium azide and 50% Glycerol.
Preservative	0.02% Sodium azide
Stabilizer	50% Glycerol
Storage instruction	For continuous use, store undiluted antibody at 2-8°C for up to a week. For long-term storage, aliquot and store at -20°C. Storage in frost free freezers is not recommended. Avoid repeated freeze/thaw cycles. Suggest spin the vial prior to opening. The antibody solution should be gently mixed before use.

## Bioinformation

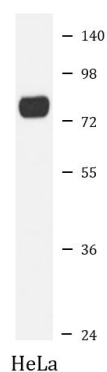
Gene Symbol	RDX
Gene Full Name	radixin
Background	Radixin is a cytoskeletal protein that may be important in linking actin to the plasma membrane. It is highly similar in sequence to both ezrin and moesin. The radixin gene has been localized by fluorescence in situ hybridization to 11q23. A truncated version representing a pseudogene (RDXP2) was assigned to Xp21.3. Another pseudogene that seemed to lack introns (RDXP1) was mapped to 11p by Southern and PCR analyses. Multiple alternatively spliced transcript variants encoding different isoforms have been found for this gene. [provided by RefSeq, May 2012]
Function	Probably plays a crucial role in the binding of the barbed end of actin filaments to the plasma membrane. [UniProt]
Calculated Mw	69 kDa
PTM	Phosphorylated by tyrosine-protein kinases. Phosphorylation by ROCK2 suppresses the head-to-tail association of the N-terminal and C-terminal halves resulting in an opened conformation which is capable of actin and membrane-binding (By similarity). [UniProt]
Cellular Localization	Cell membrane; Peripheral membrane protein; Cytoplasmic side. Cytoplasm, cytoskeleton. Cleavage furrow. Cell projection, microvillus. Note=Highly concentrated in the undercoat of the cell-to-cell adherens junction and the cleavage furrow in the interphase and mitotic phase, respectively. [UniProt]

## Images



ARG41298 anti-Radixin antibody IHC-P image

Immunohistochemistry: Paraffin-embedded Human spleen tissue stained with ARG41298 anti-Radixin antibody.



ARG41298 anti-Radixin antibody WB image

Western blot: HeLa cell lysate stained with ARG41298 anti-Radixin antibody.