

ARG41279 anti-Recoverin antibody

Package: 100 µl
Store at: -20°C

Summary

Product Description	Rabbit Polyclonal antibody recognizes Recoverin
Tested Reactivity	Hu, Ms, Rat
Tested Application	ICC/IF, IHC-P, WB
Host	Rabbit
Clonality	Polyclonal
Isotype	IgG
Target Name	Recoverin
Species	Human
Immunogen	Recombinant fusion protein corresponding to aa. 1-200 of Human Recoverin (NP_002894.1).
Conjugation	Un-conjugated
Alternate Names	Recoverin; Cancer-associated retinopathy protein; RCV1; Protein CAR

Application Instructions

Application table	Application	Dilution
	ICC/IF	1:50 - 1:200
	IHC-P	1:50 - 1:200
	WB	1:500 - 1:2000
Application Note	* The dilutions indicate recommended starting dilutions and the optimal dilutions or concentrations should be determined by the scientist.	
Positive Control	Mouse eye	
Observed Size	23 kDa	

Properties

Form	Liquid
Purification	Affinity purified.
Buffer	PBS (pH 7.3), 0.02% Sodium azide and 50% Glycerol.
Preservative	0.02% Sodium azide
Stabilizer	50% Glycerol
Storage instruction	For continuous use, store undiluted antibody at 2-8°C for up to a week. For long-term storage, aliquot and store at -20°C. Storage in frost free freezers is not recommended. Avoid repeated freeze/thaw cycles. Suggest spin the vial prior to opening. The antibody solution should be gently mixed before use.

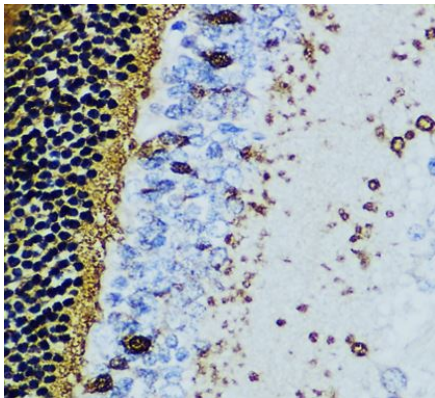
Note

For laboratory research only, not for drug, diagnostic or other use.

Bioinformation

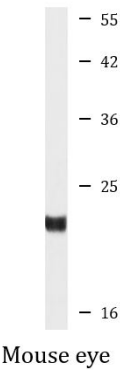
Gene Symbol	RCVRN
Gene Full Name	recoverin
Background	This gene encodes a member of the recoverin family of neuronal calcium sensors. The encoded protein contains three calcium-binding EF-hand domains and may prolong the termination of the phototransduction cascade in the retina by blocking the phosphorylation of photo-activated rhodopsin. Recoverin may be the antigen responsible for cancer-associated retinopathy. [provided by RefSeq, Jul 2008]
Function	Seems to be implicated in the pathway from retinal rod guanylate cyclase to rhodopsin. May be involved in the inhibition of the phosphorylation of rhodopsin in a calcium-dependent manner. The calcium-bound recoverin prolongs the photoresponse. [UniProt]
Calculated Mw	23 kDa

Images



ARG41279 anti-Recoverin antibody IHC-P image

Immunohistochemistry: Paraffin-embedded Rat retina tissue stained with ARG41279 anti-Recoverin antibody at 1:200 dilution.



ARG41279 anti-Recoverin antibody WB image

Western blot: 25 ug of Mouse eye lysate stained with ARG41279 anti-Recoverin antibody at 1:1000 dilution.