

ARG41266 anti-GOSR2 / Membrin antibody

Package: 50 µg
Store at: -20°C

Summary

Product Description	Rabbit Polyclonal antibody recognizes GOSR2 / Membrin
Tested Reactivity	Hu
Tested Application	IHC-P, WB
Host	Rabbit
Clonality	Polyclonal
Isotype	IgG
Target Name	GOSR2 / Membrin
Species	Human
Immunogen	Recombinant protein corresponding to aa. 1-190 of Human GOSR2 / Membrin.
Conjugation	Un-conjugated
Alternate Names	Membrin; EPM6; Bos1; Golgi SNAP receptor complex member 2; GS27; 27 kDa Golgi SNARE protein

Application Instructions

Application table	Application	Dilution
	IHC-P	1:100
	WB	4 µg/ml
Application Note	* The dilutions indicate recommended starting dilutions and the optimal dilutions or concentrations should be determined by the scientist.	
Observed Size	26 kDa	

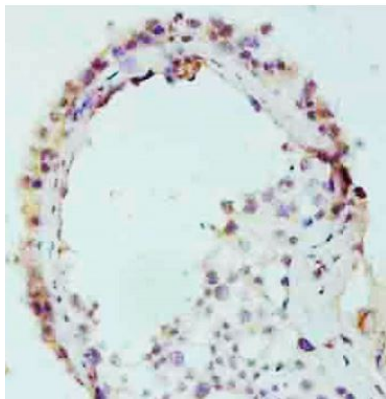
Properties

Form	Liquid
Purification	Caprylic acid ammonium sulfate precipitation.
Buffer	0.01M PBS (pH 7.4), 0.03% Proclin 300 and 50% Glycerol.
Preservative	0.03% Proclin 300
Stabilizer	50% Glycerol
Storage instruction	For continuous use, store undiluted antibody at 2-8°C for up to a week. For long-term storage, aliquot and store at -20°C. Storage in frost free freezers is not recommended. Avoid repeated freeze/thaw cycles. Suggest spin the vial prior to opening. The antibody solution should be gently mixed before use.
Note	For laboratory research only, not for drug, diagnostic or other use.

Bioinformation

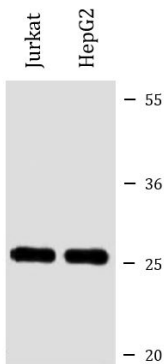
Gene Symbol	GOSR2
Gene Full Name	golgi SNAP receptor complex member 2
Background	This gene encodes a trafficking membrane protein which transports proteins among the medial- and trans-Golgi compartments. Due to its chromosomal location and trafficking function, this gene may be involved in familial essential hypertension. Three transcript variants encoding three different isoforms have been found for this gene. [provided by RefSeq, Jul 2008]
Function	Involved in transport of proteins from the cis/medial-Golgi to the trans-Golgi network. [UniProt]
Calculated Mw	25 kDa
Cellular Localization	Golgi apparatus, cis-Golgi network membrane; Single-pass type IV membrane protein. Golgi apparatus membrane. Endoplasmic reticulum membrane. Note=Concentrated most in the intermediate compartment/cis-Golgi network and the cis-Golgi cisternae 1 and 2. Greatly reduced in concentration at the trans end of the Golgi apparatus. [UniProt]

Images



ARG41266 anti-GOSR2 / Membrin antibody IHC-P image

Immunohistochemistry: Paraffin-embedded Human testis tissue stained with ARG41266 anti-GOSR2 / Membrin antibody at 1:100 dilution.



ARG41266 anti-GOSR2 / Membrin antibody WB image

Western blot: Jurkat and HepG2 whole cell lysates stained with ARG41266 anti-GOSR2 / Membrin antibody at 4 µg/ml dilution.