

ARG41255
anti-SPARCL1 antibodyPackage: 50 µl
Store at: -20°C

Summary

Product Description	Rabbit Polyclonal antibody recognizes SPARCL1
Tested Reactivity	Hu
Tested Application	WB
Host	Rabbit
Clonality	Polyclonal
Isotype	IgG
Target Name	SPARCL1
Species	Human
Immunogen	Recombinant protein corresponding to Gly298 - His545 of Human SPARCL1.
Conjugation	Un-conjugated
Alternate Names	SPARC-like protein 1; High endothelial venule protein; MAST 9; PIG33; Hevin; MAST9; SC1

Application Instructions

Application table	Application	Dilution
	WB	Assay-dependent
Application Note	* The dilutions indicate recommended starting dilutions and the optimal dilutions or concentrations should be determined by the scientist.	
Observed Size	70 kDa	

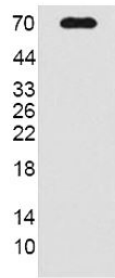
Properties

Form	Liquid
Purification	Affinity purification with immunogen.
Buffer	PBS (pH 7.4), 0.02% Sodium azide and 50% Glycerol.
Preservative	0.02% Sodium azide
Stabilizer	50% Glycerol
Concentration	0.2 mg/ml
Storage instruction	For continuous use, store undiluted antibody at 2-8°C for up to a week. For long-term storage, aliquot and store at -20°C. Storage in frost free freezers is not recommended. Avoid repeated freeze/thaw cycles. Suggest spin the vial prior to opening. The antibody solution should be gently mixed before use.
Note	For laboratory research only, not for drug, diagnostic or other use.

Bioinformation

Gene Symbol	SPARCL1
Gene Full Name	SPARC-like 1 (hevin)
Calculated Mw	75 kDa
PTM	N- and O-glycosylated. O-glycosylated with a core 1 or possibly core 8 glycan. [UniProt]
Cellular Localization	Secreted, extracellular space, extracellular matrix. [UniProt]

Images



Human recombinant
SPARCL1

ARG41255 anti-SPARCL1 antibody WB image

Western blot: Human recombinant SPARCL1 protein stained with ARG41255 anti-SPARCL1 antibody.