

ARG41214 anti-TOX / TOX1 antibody

Package: 100 µl
Store at: -20°C

Summary

Product Description	Rabbit Polyclonal antibody recognizes TOX / TOX1
Tested Reactivity	Hu, Ms, Rat
Tested Application	ICC/IF, IHC-P, WB
Host	Rabbit
Clonality	Polyclonal
Isotype	IgG
Target Name	TOX / TOX1
Species	Human
Immunogen	Recombinant fusion protein corresponding to aa. 297-526 of Human TOX / TOX1 (NP_055544.1).
Conjugation	Un-conjugated
Alternate Names	Thymocyte selection-associated high mobility group box protein TOX; TOX1; Thymus high mobility group box protein TOX

Application Instructions

Application table	Application	Dilution
	ICC/IF	1:50 - 1:200
	IHC-P	1:50 - 1:200
	WB	1:500 - 1:2000
Application Note	* The dilutions indicate recommended starting dilutions and the optimal dilutions or concentrations should be determined by the scientist.	

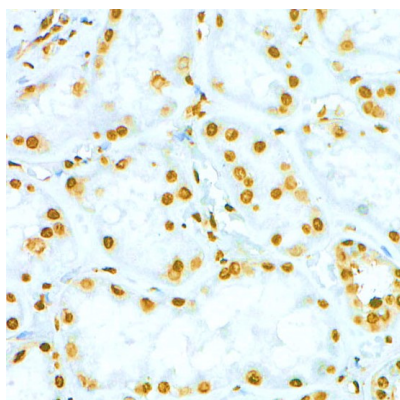
Properties

Form	Liquid
Purification	Affinity purified.
Buffer	PBS (pH 7.3), 0.02% Sodium azide and 50% Glycerol.
Preservative	0.02% Sodium azide
Stabilizer	50% Glycerol
Storage instruction	For continuous use, store undiluted antibody at 2-8°C for up to a week. For long-term storage, aliquot and store at -20°C. Storage in frost free freezers is not recommended. Avoid repeated freeze/thaw cycles. Suggest spin the vial prior to opening. The antibody solution should be gently mixed before use.
Note	For laboratory research only, not for drug, diagnostic or other use.

Bioinformation

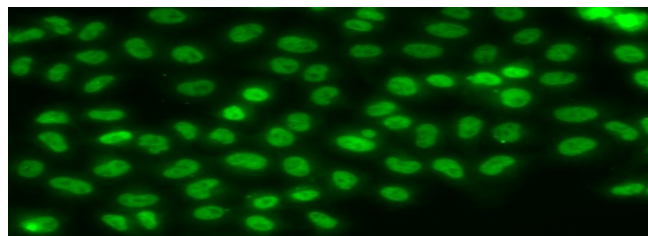
Gene Symbol	TOX
Gene Full Name	thymocyte selection-associated high mobility group box
Background	The protein encoded by this gene contains a HMG box DNA binding domain. HMG boxes are found in many eukaryotic proteins involved in chromatin assembly, transcription and replication. This protein may function to regulate T-cell development.[provided by RefSeq, Apr 2009]
Function	May play a role in regulating T-cell development. [UniProt]
Calculated Mw	58 kDa
Cellular Localization	Nucleus. [UniProt]

Images



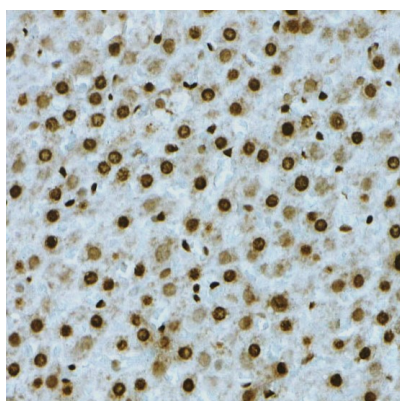
ARG41214 anti-TOX / TOX1 antibody IHC-P image

Immunohistochemistry: Human kidney stained with ARG41214 anti-TOX / TOX1 antibody at 1:50 dilution.



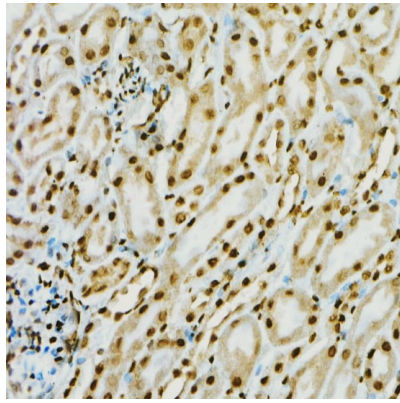
ARG41214 anti-TOX / TOX1 antibody ICC/IF image

Immunofluorescence: U2OS stained with ARG41214 anti-TOX / TOX1 antibody.



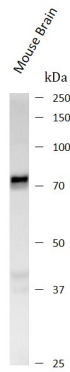
ARG41214 anti-TOX / TOX1 antibody IHC-P image

Immunohistochemistry: Rat liver stained with ARG41214 anti-TOX / TOX1 antibody at 1:50 dilution.



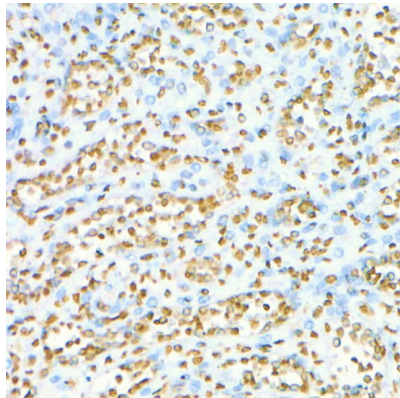
ARG41214 anti-TOX / TOX1 antibody IHC-P image

Immunohistochemistry: Mouse kidney stained with ARG41214 anti-TOX / TOX1 antibody at 1:50 dilution.



ARG41214 anti-TOX / TOX1 antibody WB image

Western blot: Mouse Brain stained with ARG41214 anti-TOX / TOX1 antibody at 1:400 dilution.



ARG41214 anti-TOX / TOX1 antibody IHC-P image

Immunohistochemistry: Human spleen stained with ARG41214 anti-TOX / TOX1 antibody at 1:50 dilution.