

ARG41212 anti-SEC24C antibody

Package: 100 µl
Store at: -20°C

Summary

| | |
|---------------------|---|
| Product Description | Rabbit Polyclonal antibody recognizes SEC24C |
| Tested Reactivity | Hu |
| Tested Application | ICC/IF, WB |
| Host | Rabbit |
| Clonality | Polyclonal |
| Isotype | IgG |
| Target Name | SEC24C |
| Species | Human |
| Immunogen | Recombinant fusion protein corresponding to aa. 915-1094 of Human SEC24C (NP_004913.2). |
| Conjugation | Un-conjugated |
| Alternate Names | SEC24-related protein C; Protein transport protein Sec24C |

Application Instructions

| | | |
|-------------------|--|----------------|
| Application table | Application | Dilution |
| | ICC/IF | 1:50 - 1:200 |
| | WB | 1:500 - 1:2000 |
| Application Note | * The dilutions indicate recommended starting dilutions and the optimal dilutions or concentrations should be determined by the scientist. | |
| Positive Control | HT-29 | |
| Observed Size | 118 kDa | |

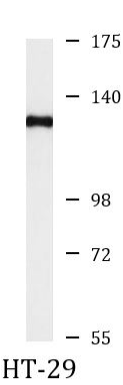
Properties

| | |
|---------------------|---|
| Form | Liquid |
| Purification | Affinity purified. |
| Buffer | PBS (pH 7.3), 0.02% Sodium azide and 50% Glycerol. |
| Preservative | 0.02% Sodium azide |
| Stabilizer | 50% Glycerol |
| Storage instruction | For continuous use, store undiluted antibody at 2-8°C for up to a week. For long-term storage, aliquot and store at -20°C. Storage in frost free freezers is not recommended. Avoid repeated freeze/thaw cycles. Suggest spin the vial prior to opening. The antibody solution should be gently mixed before use. |
| Note | For laboratory research only, not for drug, diagnostic or other use. |

Bioinformation

| | |
|-----------------------|---|
| Gene Symbol | SEC24C |
| Gene Full Name | SEC24 homolog C, COPII coat complex component |
| Background | The protein encoded by this gene is a member of the SEC24 subfamily of the SEC23/SEC24 family, which is involved in vesicle trafficking. The encoded protein has similarity to yeast Sec24p component of COPII. COPII is the coat protein complex responsible for vesicle budding from the ER. The product of this gene may play a role in shaping the vesicle, as well as in cargo selection and concentration. Alternatively spliced transcript variants encoding the same protein have been identified. [provided by RefSeq, Jul 2008] |
| Function | Component of the COPII coat, that covers ER-derived vesicles involved in transport from the endoplasmic reticulum to the Golgi apparatus. COPII acts in the cytoplasm to promote the transport of secretory, plasma membrane, and vacuolar proteins from the endoplasmic reticulum to the Golgi complex. [UniProt] |
| Calculated Mw | 118 kDa |
| Cellular Localization | Cytoplasmic vesicle, COPII-coated vesicle membrane; Peripheral membrane protein; Cytoplasmic side. Endoplasmic reticulum membrane; Peripheral membrane protein; Cytoplasmic side. Cytoplasm, cytosol. [UniProt] |

Images



ARG41212 anti-SEC24C antibody WB image

Western blot: 25 µg of HT-29 cell lysate stained with ARG41212 anti-SEC24C antibody at 1:1000 dilution.