

## ARG41023 anti-PSMB4 antibody

Package: 100 µl  
Store at: -20°C

### Summary

Product Description	Rabbit Polyclonal antibody recognizes PSMB4
Tested Reactivity	Hu, Ms, Rat
Tested Application	WB
Host	Rabbit
Clonality	Polyclonal
Isotype	IgG
Target Name	PSMB4
Species	Human
Immunogen	Recombinant fusion protein corresponding to aa. 1-264 of Human PSMB4 (NP_002787.2).
Conjugation	Un-conjugated
Alternate Names	Proteasome chain 3; PROS-26; Proteasome subunit beta type-4; HsBPROS26; PROS26; Macropain beta chain; HN3; 26 kDa prosomal protein; EC 3.4.25.1; Proteasome beta chain; HsN3; Multicatalytic endopeptidase complex beta chain

### Application Instructions

Application table	<table> <tr> <th>Application</th><th>Dilution</th></tr> <tr> <td>WB</td><td>1:500 - 1:2000</td></tr> </table>	Application	Dilution	WB	1:500 - 1:2000
Application	Dilution				
WB	1:500 - 1:2000				
Application Note	* The dilutions indicate recommended starting dilutions and the optimal dilutions or concentrations should be determined by the scientist.				
Positive Control	A375				
Observed Size	22 kDa				

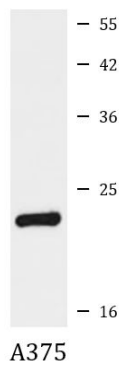
### Properties

Form	Liquid
Purification	Affinity purified.
Buffer	PBS (pH 7.3), 0.02% Sodium azide and 50% Glycerol.
Preservative	0.02% Sodium azide
Stabilizer	50% Glycerol
Storage instruction	For continuous use, store undiluted antibody at 2-8°C for up to a week. For long-term storage, aliquot and store at -20°C. Storage in frost free freezers is not recommended. Avoid repeated freeze/thaw cycles. Suggest spin the vial prior to opening. The antibody solution should be gently mixed before use.
Note	For laboratory research only, not for drug, diagnostic or other use.

Bioinformation

Gene Symbol	PSMB4
Gene Full Name	proteasome subunit beta 4
Background	The proteasome is a multicatalytic proteinase complex with a highly ordered ring-shaped 20S core structure. The core structure is composed of 4 rings of 28 non-identical subunits; 2 rings are composed of 7 alpha subunits and 2 rings are composed of 7 beta subunits. Proteasomes are distributed throughout eukaryotic cells at a high concentration and cleave peptides in an ATP/ubiquitin-dependent process in a non-lysosomal pathway. An essential function of a modified proteasome, the immunoproteasome, is the processing of class I MHC peptides. This gene encodes a member of the proteasome B-type family, also known as the T1B family, that is a 20S core beta subunit. [provided by RefSeq, Jul 2008]
Function	The proteasome is a multicatalytic proteinase complex which is characterized by its ability to cleave peptides with Arg, Phe, Tyr, Leu, and Glu adjacent to the leaving group at neutral or slightly basic pH. The proteasome has an ATP-dependent proteolytic activity. Mediates the lipopolysaccharide-induced signal macrophage proteasome (By similarity). SMAD1/OAZ1/PSMB4 complex mediates the degradation of the CREBBP/EP300 repressor SNIP1. [UniProt]
Calculated Mw	29 kDa
Cellular Localization	Cytoplasm. Nucleus. [UniProt]

Images



ARG41023 anti-PSMB4 antibody WB image

Western blot: 25 µg of A375 cell lysate stained with ARG41023 anti-PSMB4 antibody at 1:1000 dilution.