

ARG41001 anti-Calcineurin B antibody

Package: 100 µl
Store at: -20°C

Summary

Product Description	Rabbit Polyclonal antibody recognizes Calcineurin B
Tested Reactivity	Hu, Ms, Rat
Tested Application	ICC/IF, WB
Specificity	This antibody might reacts to both PPP3R1 (100%) and PPP3R2 (84%) protein based on sequence analysis.
Host	Rabbit
Clonality	Polyclonal
Isotype	IgG
Target Name	Calcineurin B
Species	Human
Immunogen	Recombinant fusion protein corresponding to aa. 11-170 of Human Calcineurin B (NP_000936.1).
Conjugation	Un-conjugated
Alternate Names	CALNB1; Calcineurin subunit B type 1; CNB1; Protein phosphatase 3 regulatory subunit B alpha isoform 1; CNB; Protein phosphatase 2B regulatory subunit 1

Application Instructions

Application table	Application	Dilution
	ICC/IF	1:50 - 1:200
	WB	1:500 - 1:2000
Application Note	* The dilutions indicate recommended starting dilutions and the optimal dilutions or concentrations should be determined by the scientist.	
Positive Control	HL-60	
Observed Size	15 kDa	

Properties

Form	Liquid
Purification	Affinity purified.
Buffer	PBS (pH 7.3), 0.02% Sodium azide and 50% Glycerol.
Preservative	0.02% Sodium azide
Stabilizer	50% Glycerol
Storage instruction	For continuous use, store undiluted antibody at 2-8°C for up to a week. For long-term storage, aliquot and store at -20°C. Storage in frost free freezers is not recommended. Avoid repeated freeze/thaw cycles. Suggest spin the vial prior to opening. The antibody solution should be gently mixed before use.

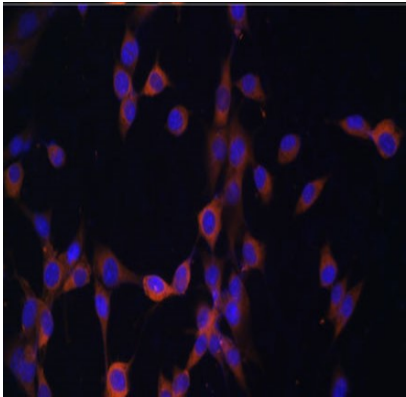
Note

For laboratory research only, not for drug, diagnostic or other use.

Bioinformation

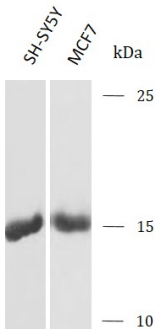
Gene Symbol	PPP3R1
Gene Full Name	protein phosphatase 3, regulatory subunit B, alpha
Function	Regulatory subunit of calcineurin, a calcium-dependent, calmodulin stimulated protein phosphatase. Confers calcium sensitivity. [UniProt]
Calculated Mw	19 kDa
Cellular Localization	Cytoplasm, cytosol. Cell membrane. Cell membrane, sarcolemma. Membrane; Lipid-anchor. Note=Translocates from the cytosol to the sarcolemma in a CIB1-dependent manner during cardiomyocytes hypertrophy. [UniProt]

Images



ARG41001 anti-Calcineurin B antibody ICC/IF image

Immunofluorescence: NIH/3T3 stained with ARG41001 anti-Calcineurin B antibody at 1:100 dilution.



ARG41001 anti-Calcineurin B antibody WB image

Western blot: SH-SY5Y and MCF7 stained with ARG41001 anti-Calcineurin B antibody at 1:1000 dilution.

ARG41001 anti-Calceurin B antibody WB image

Western blot: Rat testis stained with ARG41001 anti-Calceurin B antibody at 1:1000 dilution.



ARG41001 anti-Calceurin B antibody WB image

Western blot: Mouse Brain and Mouse Spleen stained with ARG41001 anti-Calceurin B antibody at 1:1000 dilution.

