

**ARG40986**  
**anti-TFPI2 antibody**Package: 50 µg  
Store at: -20°C

### Summary

|                     |   |
|---------------------|---|
| Product Description | Rabbit Polyclonal antibody recognizes TFPI2                                     |
| Tested Reactivity   | Hu  |
| Tested Application  | IHC-P, WB   |
| Host                | Rabbit  |
| Clonality           | Polyclonal  |
| Isotype             | IgG   |
| Target Name         | TFPI2   |
| Species             | Human   |
| Immunogen           | Synthetic peptide corresponding to aa. 170-186 of Human TFPI2 (NVTRYFNPRTCDAF). |
| Conjugation         | Un-conjugated   |
| Alternate Names     | REF1; TFPI-2; Placental protein 5; PP5; Tissue factor pathway inhibitor 2       |

### Application Instructions

|                   |  |                |
|-------------------|--|----------------|
| Application table | Application  | Dilution       |
|                   | IHC-P  | 1:200 - 1:1000 |
|                   | WB   | 1:500 - 1:2000 |
| Application Note  | * The dilutions indicate recommended starting dilutions and the optimal dilutions or concentrations should be determined by the scientist. |                |

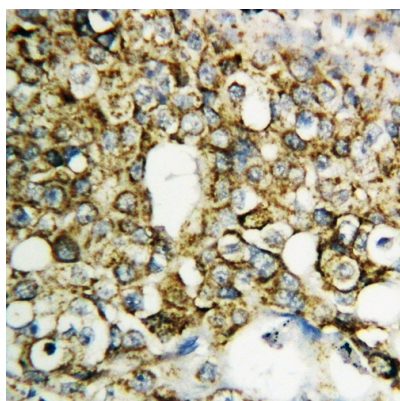
### Properties

|                     |  |
|---------------------|--|
| Form                | Liquid   |
| Purification        | Affinity purification with immunogen.  |
| Buffer              | 0.2% Na2HPO4, 0.9% NaCl, 0.05% Thimerosal, 0.05% Sodium azide and 5% BSA.  |
| Preservative        | 0.05% Thimerosal and 0.05% Sodium azide  |
| Stabilizer          | 5% BSA   |
| Concentration       | 0.5 mg/ml  |
| Storage instruction | For continuous use, store undiluted antibody at 2-8°C for up to a week. For long-term storage, aliquot and store at -20°C or below. Storage in frost free freezers is not recommended. Avoid repeated freeze/thaw cycles. Suggest spin the vial prior to opening. The antibody solution should be gently mixed before use. |
| Note                | For laboratory research only, not for drug, diagnostic or other use.   |

## Bioinformation

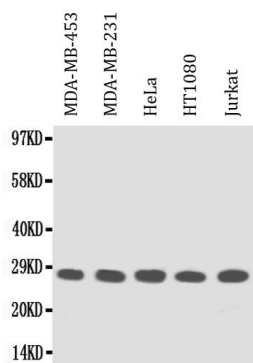
|                       |   |
|-----------------------|---|
| Gene Symbol           | TFPI2   |
| Gene Full Name        | tissue factor pathway inhibitor 2   |
| Background            | This gene encodes a member of the Kunitz-type serine proteinase inhibitor family. The protein can inhibit a variety of serine proteases including factor VIIa/tissue factor, factor Xa, plasmin, trypsin, chymotrypsin and plasma kallikrein. This gene has been identified as a tumor suppressor gene in several types of cancer. Alternative splicing results in multiple transcript variants. [provided by RefSeq, Aug 2012] |
| Function              | May play a role in the regulation of plasmin-mediated matrix remodeling. Inhibits trypsin, plasmin, factor VIIa/tissue factor and weakly factor Xa. Has no effect on thrombin. [UniProt]  |
| Calculated Mw         | 27 kDa  |
| Cellular Localization | Secreted. [UniProt]   |

## Images



ARG40986 anti-TFPI2 antibody IHC-P image

Immunohistochemistry: Paraffin-embedded Human mammary cancer tissue stained with ARG40986 anti-TFPI2 antibody.



ARG40986 anti-TFPI2 antibody WB image

Western blot: MDA-MB-453, MDA-MB-231, HeLa, HT1080 and Jurkat cell lysates stained with ARG40986 anti-TFPI2 antibody.