

## ARG40967 anti-PSMB7 antibody

Package: 100 µl  
Store at: -20°C

### Summary

Product Description	Rabbit Polyclonal antibody recognizes PSMB7
Tested Reactivity	Hu, Ms
Tested Application	IHC-P, WB
Host	Rabbit
Clonality	Polyclonal
Isotype	IgG
Target Name	PSMB7
Species	Human
Immunogen	KLH-conjugated synthetic peptide between aa. 180-211 of Human PSMB7.
Conjugation	Un-conjugated
Alternate Names	Multicatalytic endopeptidase complex chain Z; Z; Proteasome subunit beta type-7; EC 3.4.25.1; Proteasome subunit Z; Macropain chain Z

### Application Instructions

Application table	Application	Dilution
	IHC-P	
	WB	1:1000
Application Note	IHC-P: Antigen Retrieval: Heat mediation was performed in Citrate buffer (pH 6.0). * The dilutions indicate recommended starting dilutions and the optimal dilutions or concentrations should be determined by the scientist.	
Positive Control	Raji	

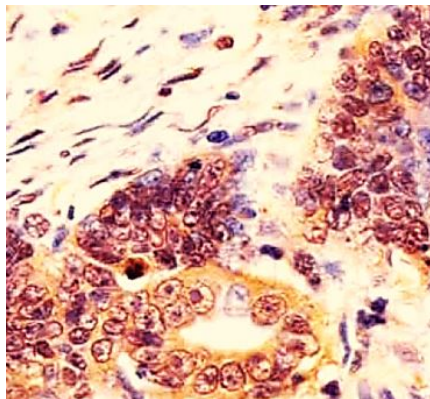
### Properties

Form	Liquid
Purification	Purification with Protein A and immunogen peptide.
Buffer	PBS and 0.09% (W/V) Sodium azide.
Preservative	0.09% (W/V) Sodium azide.
Storage instruction	For continuous use, store undiluted antibody at 2-8°C for up to a week. For long-term storage, aliquot and store at -20°C or below. Storage in frost free freezers is not recommended. Avoid repeated freeze/thaw cycles. Suggest spin the vial prior to opening. The antibody solution should be gently mixed before use.
Note	For laboratory research only, not for drug, diagnostic or other use.

## Bioinformation

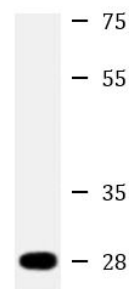
Gene Symbol	PSMB7
Gene Full Name	proteasome (prosome, macropain) subunit, beta type, 7
Background	<p>The proteasome is a multicatalytic proteinase complex with a highly ordered ring-shaped 20S core structure. The core structure is composed of 4 rings of 28 non-identical subunits; 2 rings are composed of 7 alpha subunits and 2 rings are composed of 7 beta subunits. Proteasomes are distributed throughout eukaryotic cells at a high concentration and cleave peptides in an ATP/ubiquitin-dependent process in a non-lysosomal pathway. The encoded protein is a member of the proteasome B-type family, also known as the T1B family, and is a 20S core beta subunit in the proteasome. Expression of this catalytic subunit is downregulated by gamma interferon, and proteolytic processing is required to generate a mature subunit. A pseudogene of this gene is located on the long arm of chromosome 14. [provided by RefSeq, Jul 2012]</p>
Function	<p>The proteasome is a multicatalytic proteinase complex which is characterized by its ability to cleave peptides with Arg, Phe, Tyr, Leu, and Glu adjacent to the leaving group at neutral or slightly basic pH. The proteasome has an ATP-dependent proteolytic activity. This unit is responsible of the trypsin-like activity. [UniProt]</p>
Calculated Mw	30 kDa
Cellular Localization	Cytoplasm. Nucleus. [UniProt]

## Images



ARG40967 anti-PSMB7 antibody IHC-P image

Immunohistochemistry: Paraformaldehyde-fixed and paraffin-embedded Human colorectal carcinoma tissue. Tissue was blocked with 3% BSA for 0.5 hour at room temperature. Antigen Retrieval: Heat mediation was performed in Citrate buffer (pH 6.0). Samples were stained with ARG40967 anti-PSMB7 antibody at 1:25 dilution for 1 hours at 37°C.



Raji

ARG40967 anti-PSMB7 antibody WB image

Western blot: 20 µg of Raji cell lysate stained with ARG40967 anti-PSMB7 antibody at 1:2000 dilution.