

ARG40903 anti-gamma Tubulin antibody

Package: 100 µl
Store at: -20°C

Summary

Product Description	Rabbit Polyclonal antibody recognizes gamma Tubulin
Tested Reactivity	Hu, Ms, Rat, Chk, Cow, Dog, Fsh, Hm, Mk, Xenopus
Tested Application	FACS, ICC/IF, IHC-P, IP, WB
Host	Rabbit
Clonality	Polyclonal
Isotype	IgG
Target Name	gamma Tubulin
Species	Human
Immunogen	Synthetic peptide derived from Human gamma Tubulin.
Conjugation	Un-conjugated
Alternate Names	GCP-1; CDCBM4; TUBG; Gamma-1-tubulin; Tubulin gamma-1 chain; TUBGCP1; Gamma-tubulin complex component 1

Application Instructions

Application table	Application	Dilution
	FACS	1:50
	ICC/IF	1:50 - 1:200
	IHC-P	1:50 - 1:200
	IP	1:50
	WB	1:500 - 1:2000
Application Note	* The dilutions indicate recommended starting dilutions and the optimal dilutions or concentrations should be determined by the scientist.	
Positive Control	HeLa	

Properties

Form	Liquid
Purification	Affinity purified.
Buffer	PBS (pH 7.4), 150 mM NaCl, 0.02% Sodium azide and 50% Glycerol.
Preservative	0.02% Sodium azide
Stabilizer	50% Glycerol
Storage instruction	For continuous use, store undiluted antibody at 2-8°C for up to a week. For long-term storage, aliquot and store at -20°C. Storage in frost free freezers is not recommended. Avoid repeated freeze/thaw

cycles. Suggest spin the vial prior to opening. The antibody solution should be gently mixed before use.

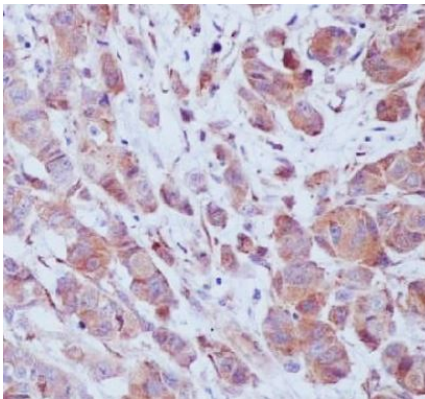
Note

For laboratory research only, not for drug, diagnostic or other use.

Bioinformation

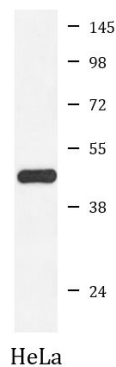
Gene Symbol	TUBG1
Gene Full Name	tubulin, gamma 1
Background	This gene encodes a member of the tubulin superfamily. The encoded protein localizes to the centrosome where it binds to microtubules as part of a complex referred to as the gamma-tubulin ring complex. The protein mediates microtubule nucleation and is required for microtubule formation and progression of the cell cycle. A pseudogene of this gene is found on chromosome 7. [provided by RefSeq, Jan 2009]
Function	Tubulin is the major constituent of microtubules. The gamma chain is found at microtubule organizing centers (MTOC) such as the spindle poles or the centrosome. Pericentriolar matrix component that regulates alpha/beta chain minus-end nucleation, centrosome duplication and spindle formation. [UniProt]
Calculated Mw	51 kDa
PTM	Phosphorylation at Ser-131 by BRSK1 regulates centrosome duplication, possibly by mediating relocation of gamma-tubulin and its associated proteins from the cytoplasm to the centrosome. [UniProt]
Cellular Localization	Cytoplasm, cytoskeleton, microtubule organizing center, centrosome. [UniProt]

Images



ARG40903 anti-gamma Tubulin antibody IHC-P image

Immunohistochemistry: Paraffin-embedded Human breast cancer tissue stained with ARG40903 anti-gamma Tubulin antibody.



ARG40903 anti-gamma Tubulin antibody WB image

Western blot: HeLa cell lysate stained with ARG40903 anti-gamma Tubulin antibody.