

ARG40815 anti-Neutrophil Elastase antibody

Package: 100 µl
Store at: -20°C

Summary

Product Description	Rabbit Polyclonal antibody recognizes Neutrophil Elastase
Tested Reactivity	Hu, Ms, Rat
Tested Application	ICC/IF, IHC-P, WB
Host	Rabbit
Clonality	Polyclonal
Isotype	IgG
Target Name	Neutrophil Elastase
Species	Human
Immunogen	Recombinant fusion protein corresponding to aa. 30-267 of Human Neutrophil Elastase (NP_001963.1).
Conjugation	Un-conjugated
Alternate Names	Neutrophil elastase; HNE; EC 3.4.21.37; Medullasin; NE; ELA2; GE; Bone marrow serine protease; SCN1; PMN-E; Human leukocyte elastase; HLE; Elastase-2; PMN elastase

Application Instructions

Application table	Application	Dilution
	ICC/IF	1:50 - 1:200
	IHC-P	1:50 - 1:200
	WB	1:500 - 1:2000
Application Note	* The dilutions indicate recommended starting dilutions and the optimal dilutions or concentrations should be determined by the scientist.	
Positive Control	Mouse brain	
Observed Size	29 kDa	

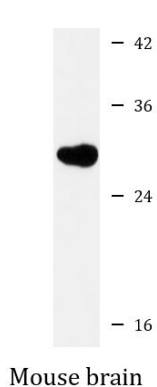
Properties

Form	Liquid
Purification	Affinity purified.
Buffer	PBS (pH 7.3), 0.02% Sodium azide and 50% Glycerol.
Preservative	0.02% Sodium azide
Stabilizer	50% Glycerol
Storage instruction	For continuous use, store undiluted antibody at 2-8°C for up to a week. For long-term storage, aliquot and store at -20°C. Storage in frost free freezers is not recommended. Avoid repeated freeze/thaw cycles. Suggest spin the vial prior to opening. The antibody solution should be gently mixed before use.

Bioinformation

Gene Symbol	ELANE
Gene Full Name	elastase, neutrophil expressed
Background	<p>Elastases form a subfamily of serine proteases that hydrolyze many proteins in addition to elastin. Humans have six elastase genes which encode the structurally similar proteins. The product of this gene hydrolyzes proteins within specialized neutrophil lysosomes, called azurophil granules, as well as proteins of the extracellular matrix following the protein's release from activated neutrophils. The enzyme may play a role in degenerative and inflammatory diseases by its proteolysis of collagen-IV and elastin of the extracellular matrix. This protein degrades the outer membrane protein A (OmpA) of <i>E. coli</i> as well as the virulence factors of such bacteria as <i>Shigella</i>, <i>Salmonella</i> and <i>Yersinia</i>. Mutations in this gene are associated with cyclic neutropenia and severe congenital neutropenia (SCN). This gene is clustered with other serine protease gene family members, azurocidin 1 and proteinase 3 genes, at chromosome 19pter. All 3 genes are expressed coordinately and their protein products are packaged together into azurophil granules during neutrophil differentiation. [provided by RefSeq, May 2009]</p>
Function	<p>Modifies the functions of natural killer cells, monocytes and granulocytes. Inhibits C5a-dependent neutrophil enzyme release and chemotaxis. [UniProt]</p>
Calculated Mw	29 kDa

Images



ARG40815 anti-Neutrophil Elastase antibody WB image

Western blot: 25 µg of Mouse brain lysate stained with ARG40815 anti-Neutrophil Elastase antibody at 1:3000 dilution.