

ARG40808 anti-PLC beta 2 antibody

Package: 100 µl
Store at: -20°C

Summary

Product Description	Rabbit Polyclonal antibody recognizes PLC beta 2
Tested Reactivity	Hu, Ms, Rat
Tested Application	WB
Host	Rabbit
Clonality	Polyclonal
Isotype	IgG
Target Name	PLC beta 2
Species	Human
Immunogen	Recombinant fusion protein corresponding to aa. 1-199 of Human PLC beta 2 (NP_001271228.1).
Conjugation	Un-conjugated
Alternate Names	1-phosphatidylinositol 4,5-bisphosphate phosphodiesterase beta-2; Phospholipase C-beta-2; PLC-beta-2; Phosphoinositide phospholipase C-beta-2; EC 3.1.4.11

Application Instructions

Application table	Application	Dilution
	WB	1:500 - 1:2000
Application Note	* The dilutions indicate recommended starting dilutions and the optimal dilutions or concentrations should be determined by the scientist.	
Positive Control	Mouse liver	

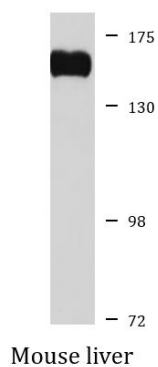
Properties

Form	Liquid
Purification	Affinity purified.
Buffer	PBS (pH 7.3), 0.02% Sodium azide and 50% Glycerol.
Preservative	0.02% Sodium azide
Stabilizer	50% Glycerol
Storage instruction	For continuous use, store undiluted antibody at 2-8°C for up to a week. For long-term storage, aliquot and store at -20°C. Storage in frost free freezers is not recommended. Avoid repeated freeze/thaw cycles. Suggest spin the vial prior to opening. The antibody solution should be gently mixed before use.
Note	For laboratory research only, not for drug, diagnostic or other use.

Bioinformation

Gene Symbol	PLCB2
Gene Full Name	phospholipase C, beta 2
Function	The production of the second messenger molecules diacylglycerol (DAG) and inositol 1,4,5-trisphosphate (IP3) is mediated by activated phosphatidylinositol-specific phospholipase C enzymes. [UniProt]
Calculated Mw	134 kDa

Images



ARG40808 anti-PLC beta 2 antibody WB image

Western blot: 25 µg of Mouse liver lysate stained with ARG40808 anti-PLC beta 2 antibody at 1:1000 dilution.