

ARG40777 anti-TTF1 antibody

Package: 100 µl
Store at: -20°C

Summary

Product Description	Rabbit Polyclonal antibody recognizes TTF1
Tested Reactivity	Hu, Ms, Rat
Tested Application	FACS, ICC/IF, IHC-P, WB
Host	Rabbit
Clonality	Polyclonal
Isotype	IgG
Target Name	TTF1
Species	Human
Immunogen	Synthetic peptide derived from Human TTF1.
Conjugation	Un-conjugated
Alternate Names	TTF1; NKX2.1; BCH; Thyroid nuclear factor 1; BHC; NKX2A; TTF1; TTF-1; Thyroid transcription factor 1; Homeobox protein NK-2 homolog A; Homeobox protein Nkx-2.1; T/EBP; Thyroid-specific enhancer-binding protein; TEBP; NK-2

Application Instructions

Application table	Application	Dilution
	FACS	1:50
	ICC/IF	1:50 - 1:200
	IHC-P	1:50 - 1:200
	WB	1:500 - 1:2000
Application Note	* The dilutions indicate recommended starting dilutions and the optimal dilutions or concentrations should be determined by the scientist.	
Observed Size	39 kDa	

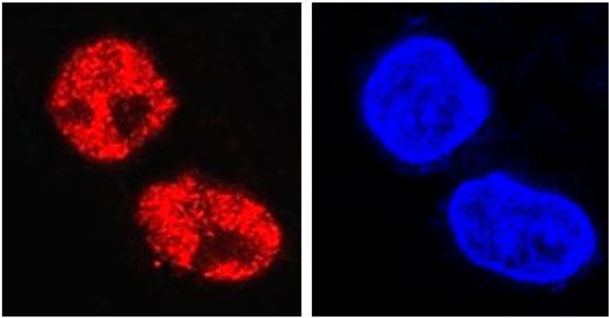
Properties

Form	Liquid
Purification	Affinity purified.
Buffer	PBS (pH 7.4), 150 mM NaCl, 0.02% Sodium azide and 50% Glycerol.
Preservative	0.02% Sodium azide
Stabilizer	50% Glycerol
Storage instruction	For continuous use, store undiluted antibody at 2-8°C for up to a week. For long-term storage, aliquot and store at -20°C. Storage in frost free freezers is not recommended. Avoid repeated freeze/thaw cycles. Suggest spin the vial prior to opening. The antibody solution should be gently mixed before use.

Bioinformation

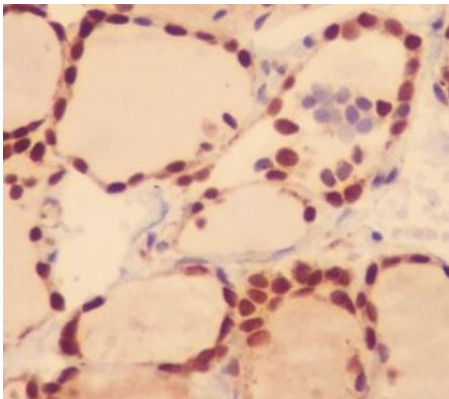
Gene Symbol	NKX2-1
Gene Full Name	NK2 homeobox 1
Background	This gene encodes a protein initially identified as a thyroid-specific transcription factor. The encoded protein binds to the thyroglobulin promoter and regulates the expression of thyroid-specific genes but has also been shown to regulate the expression of genes involved in morphogenesis. Mutations and deletions in this gene are associated with benign hereditary chorea, choreoathetosis, congenital hypothyroidism, and neonatal respiratory distress, and may be associated with thyroid cancer. Multiple transcript variants encoding different isoforms have been found for this gene. This gene shares the symbol/alias 'TTF1' with another gene, transcription termination factor 1, which plays a role in ribosomal gene transcription. [provided by RefSeq, Feb 2014]
Function	Transcription factor that binds and activates the promoter of thyroid specific genes such as thyroglobulin, thyroperoxidase, and thyrotropin receptor. Crucial in the maintenance of the thyroid differentiation phenotype. May play a role in lung development and surfactant homeostasis. Forms a regulatory loop with GRHL2 that coordinates lung epithelial cell morphogenesis and differentiation. Activates the transcription of GNRHR and plays a role in enhancing the circadian oscillation of its gene expression. Represses the transcription of the circadian transcriptional repressor NR1D1 (By similarity). [UniProt]
Calculated Mw	39 kDa
PTM	Phosphorylated on serine residues by STK3/MST2. [UniProt]
Cellular Localization	Nucleus. [UniProt]

Images



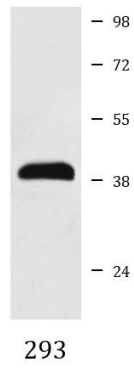
ARG40777 anti-TTF1 antibody ICC/IF image

Immunofluorescence: HeLa cells stained with ARG40777 anti-TTF1 antibody (red). DAPI (blue) for nuclear staining.



ARG40777 anti-TTF1 antibody IHC-P image

Immunohistochemistry: Paraffin-embedded Human thyroid tissue stained with ARG40777 anti-TTF1 antibody.



ARG40777 anti-TTF1 antibody WB image

Western blot: 293 cell lysate stained with ARG40777 anti-TTF1 antibody.