

ARG40747 anti-VGluT1 antibody

Package: 100 µl
Store at: -20°C

Summary

| | |
|---------------------|---|
| Product Description | Rabbit Polyclonal antibody recognizes VGluT1 |
| Tested Reactivity | Hu, Ms, Rat |
| Tested Application | WB |
| Host | Rabbit |
| Clonality | Polyclonal |
| Isotype | IgG |
| Target Name | VGluT1 |
| Species | Human |
| Immunogen | Synthetic peptide derived from Human VGluT1. |
| Conjugation | Un-conjugated |
| Alternate Names | Brain-specific Na ⁺ ; Vesicular glutamate transporter 1; Solute carrier family 17 member 7; VGLUT1; BNPI; VGluT1 |

Application Instructions

| | | |
|-------------------|--|----------------|
| Application table | Application | Dilution |
| | WB | 1:500 - 1:2000 |
| Application Note | * The dilutions indicate recommended starting dilutions and the optimal dilutions or concentrations should be determined by the scientist. | |

Properties

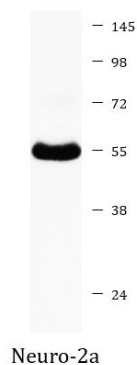
| | |
|---------------------|---|
| Form | Liquid |
| Purification | Affinity purified. |
| Buffer | PBS (pH 7.4), 150 mM NaCl, 0.02% Sodium azide and 50% Glycerol. |
| Preservative | 0.02% Sodium azide |
| Stabilizer | 50% Glycerol |
| Storage instruction | For continuous use, store undiluted antibody at 2-8°C for up to a week. For long-term storage, aliquot and store at -20°C. Storage in frost free freezers is not recommended. Avoid repeated freeze/thaw cycles. Suggest spin the vial prior to opening. The antibody solution should be gently mixed before use. |
| Note | For laboratory research only, not for drug, diagnostic or other use. |

Bioinformation

| | |
|-------------|---------|
| Gene Symbol | SLC17A7 |
|-------------|---------|

| | |
|-----------------------|---|
| Gene Full Name | solute carrier family 17 (vesicular glutamate transporter), member 7 |
| Background | The protein encoded by this gene is a vesicle-bound, sodium-dependent phosphate transporter that is specifically expressed in the neuron-rich regions of the brain. It is preferentially associated with the membranes of synaptic vesicles and functions in glutamate transport. The protein shares 82% identity with the differentiation-associated Na-dependent inorganic phosphate cotransporter and they appear to form a distinct class within the Na ⁺ /Pi cotransporter family. [provided by RefSeq, Jul 2008] |
| Function | Mediates the uptake of glutamate into synaptic vesicles at presynaptic nerve terminals of excitatory neural cells. May also mediate the transport of inorganic phosphate. [UniProt] |
| Calculated Mw | 62 kDa |
| Cellular Localization | Cytoplasmic vesicle, secretory vesicle, synaptic vesicle membrane. Membrane; Multi-pass membrane protein. Cell junction, synapse, synaptosome. [UniProt] |

Images



ARG40747 anti-VGluT1 antibody WB image

Western blot: Neuro-2a cell lysate stained with ARG40747 anti-VGluT1 antibody.