

ARG40713 anti-FOXG1 antibody

Package: 100 µl
Store at: -20°C

Summary

Product Description	Rabbit Polyclonal antibody recognizes FOXG1
Tested Reactivity	Hu, Ms
Tested Application	FACS, ICC/IF, WB
Host	Rabbit
Clonality	Polyclonal
Isotype	IgG
Target Name	FOXG1
Species	Human
Immunogen	KLH-conjugated synthetic peptide between aa. 225-252 of Human FOXG1.
Conjugation	Un-conjugated
Alternate Names	hBF-2; QIN; BF-2; FOXG1C; FOXG1B; FOXG1A; BF-1; HBF2; BF2; BF1; Forkhead box protein G1; Forkhead box protein G1A; Forkhead box protein G1B; Forkhead box protein G1C; FKHL2; FKHL3; Forkhead-related protein FKHL2; FKHL1; FKHL4; FKHL2; HFK3; HFK2; HFK1; KHL2; Forkhead-related protein FKHL1; Forkhead-related protein FKHL3; HBF-2; HBF-3; HBF-1; Brain factor 2; Brain factor 1; HBF-G2; FHKL3

Application Instructions

Application table	Application	Dilution
	FACS	1:10 - 1:50
	ICC/IF	1:10 - 1:50
	WB	1:1000
Application Note	* The dilutions indicate recommended starting dilutions and the optimal dilutions or concentrations should be determined by the scientist.	
Observed Size	~ 52 kDa	

Properties

Form	Liquid
Purification	Purification with Protein A and immunogen peptide.
Buffer	PBS and 0.09% (W/V) Sodium azide.
Preservative	0.09% (W/V) Sodium azide
Storage instruction	For continuous use, store undiluted antibody at 2-8°C for up to a week. For long-term storage, aliquot and store at -20°C or below. Storage in frost free freezers is not recommended. Avoid repeated freeze/thaw cycles. Suggest spin the vial prior to opening. The antibody solution should be gently mixed before use.

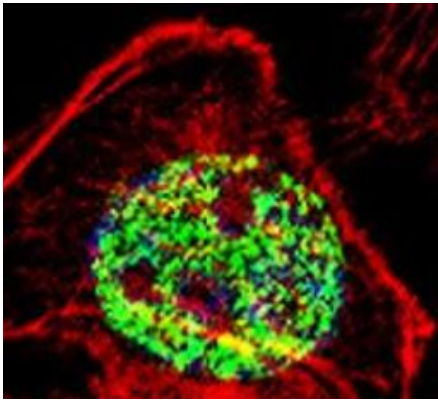
Note

For laboratory research only, not for drug, diagnostic or other use.

Bioinformation

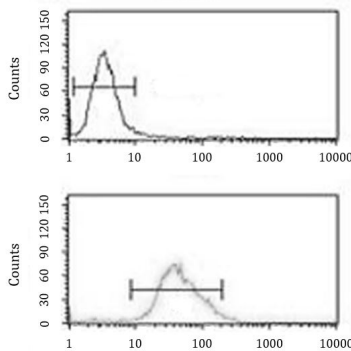
Gene Symbol	FOXG1
Gene Full Name	forkhead box G1
Background	This locus encodes a member of the forked-head transcription factor family. The encoded protein, which functions as a repressor, may play a role in brain development. Mutations at this locus have been associated with Rett syndrome. [provided by RefSeq, Feb 2012]
Function	Transcription repression factor which plays an important role in the establishment of the regional subdivision of the developing brain and in the development of the telencephalon. [UniProt]
Calculated Mw	52 kDa
Cellular Localization	Nucleus. [UniProt]

Images



ARG40713 anti-FOXG1 antibody ICC/IF image

Immunofluorescence: A549 cells were fixed with 4% PFA (20 min), permeabilized with Triton X-100 (0.1%, 10 min), then stained with ARG40713 anti-FOXG1 antibody (green) at 1:25, 1 hour at 37°C. Cytoplasmic actin was counterstained with Alexa Fluor® 555 conjugated Phalloidin (red). Nuclei were counterstained with DAPI (blue).

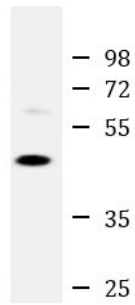


ARG40713 anti-FOXG1 antibody FACS image

Flow Cytometry: U251 cells stained with ARG40713 anti-FOXG1 antibody (bottom histogram) or without primary antibody as control (top histogram), followed by incubation with FITC labelled secondary antibody.

ARG40713 anti-FOXP1 antibody WB image

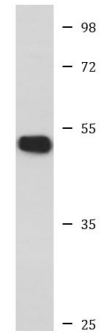
Western blot: 20 µg of Human brain lysate stained with ARG40713 anti-FOXP1 antibody at 1:1000 dilution.



Human brain

ARG40713 anti-FOXP1 antibody WB image

Western blot: 35 µg of Mouse brain lysate stained with ARG40713 anti-FOXP1 antibody.



Mouse brain