

## ARG40673 anti-Claudin 5 antibody

Package: 100 µl  
Store at: -20°C

### Summary

Product Description	Rabbit Polyclonal antibody recognizes Claudin 5
Tested Reactivity	Hu
Tested Application	IHC-P, WB
Host	Rabbit
Clonality	Polyclonal
Isotype	IgG
Target Name	Claudin 5
Species	Human
Immunogen	Synthetic peptide derived from Human Claudin 5.
Conjugation	Un-conjugated
Alternate Names	Claudin-5; TMVCF; CPETRL1; BEC1; TMDVCF; Transmembrane protein deleted in VCFS; AWAL

### Application Instructions

Application table	Application	Dilution
	IHC-P	1:50 - 1:200
	WB	1:500 - 1:2000
Application Note	* The dilutions indicate recommended starting dilutions and the optimal dilutions or concentrations should be determined by the scientist.	

### Properties

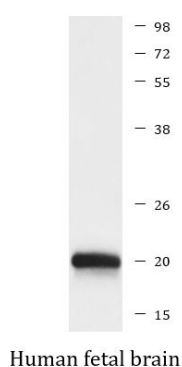
Form	Liquid
Purification	Affinity purified.
Buffer	PBS (pH 7.4), 150 mM NaCl, 0.02% Sodium azide and 50% Glycerol.
Preservative	0.02% Sodium azide
Stabilizer	50% Glycerol
Storage instruction	For continuous use, store undiluted antibody at 2-8°C for up to a week. For long-term storage, aliquot and store at -20°C. Storage in frost free freezers is not recommended. Avoid repeated freeze/thaw cycles. Suggest spin the vial prior to opening. The antibody solution should be gently mixed before use.
Note	For laboratory research only, not for drug, diagnostic or other use.

### Bioinformation

Gene Symbol	CLDN5
Gene Full Name	claudin 5
Background	This gene encodes a member of the claudin family. Claudins are integral membrane proteins and components of tight junction strands. Tight junction strands serve as a physical barrier to prevent solutes and water from passing freely through the paracellular space between epithelial or endothelial cell sheets. Mutations in this gene have been found in patients with velocardiofacial syndrome. Alternatively spliced transcript variants encoding the same protein have been found for this gene. [provided by RefSeq, Aug 2008]
Function	Plays a major role in tight junction-specific obliteration of the intercellular space. [UniProt]
Calculated Mw	23 kDa
Cellular Localization	Cell junction, tight junction. Cell membrane; Multi-pass membrane protein. [UniProt]

## Images

---



ARG40673 anti-Claudin 5 antibody WB image

Western blot: Human fetal brain lysate stained with ARG40673 anti-Claudin 5 antibody.