

## ARG40635 anti-Nrf 2 antibody

Package: 100 µl  
Store at: -20°C

### Summary

Product Description	Rabbit Polyclonal antibody recognizes Nrf 2
Tested Reactivity	Hu, Ms
Tested Application	ICC/IF, IHC-P, IP, WB
Host	Rabbit
Clonality	Polyclonal
Isotype	IgG
Target Name	Nrf 2
Species	Human
Immunogen	Synthetic peptide derived from Human Nrf2.
Conjugation	Un-conjugated
Alternate Names	Nuclear factor, erythroid derived 2, like 2; NF-E2-related factor 2; Nuclear factor erythroid 2-related factor 2; HEBP1; NRF2; NFE2-related factor 2

### Application Instructions

Application table	Application	Dilution
	ICC/IF	1:50 - 1:200
	IHC-P	1:50 - 1:200
	IP	1:50
	WB	1:500 - 1:2000
Application Note	* The dilutions indicate recommended starting dilutions and the optimal dilutions or concentrations should be determined by the scientist.	

### Properties

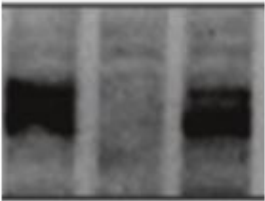
Form	Liquid
Purification	Affinity purified.
Buffer	PBS (pH 7.4), 150 mM NaCl, 0.02% Sodium azide and 50% Glycerol.
Preservative	0.02% Sodium azide
Stabilizer	50% Glycerol
Storage instruction	For continuous use, store undiluted antibody at 2-8°C for up to a week. For long-term storage, aliquot and store at -20°C. Storage in frost free freezers is not recommended. Avoid repeated freeze/thaw cycles. Suggest spin the vial prior to opening. The antibody solution should be gently mixed before use.
Note	For laboratory research only, not for drug, diagnostic or other use.

Bioinformation

Gene Symbol	NFE2L2
Gene Full Name	nuclear factor, erythroid 2-like 2
Background	This gene encodes a transcription factor which is a member of a small family of basic leucine zipper (bZIP) proteins. The encoded transcription factor regulates genes which contain antioxidant response elements (ARE) in their promoters; many of these genes encode proteins involved in response to injury and inflammation which includes the production of free radicals. Multiple transcript variants encoding different isoforms have been characterized for this gene. [provided by RefSeq, Sep 2015]
Function	Transcription activator that binds to antioxidant response (ARE) elements in the promoter regions of target genes. Important for the coordinated up-regulation of genes in response to oxidative stress. May be involved in the transcriptional activation of genes of the beta-globin cluster by mediating enhancer activity of hypersensitive site 2 of the beta-globin locus control region. [UniProt]
Highlight	Related Antibody Duos and Panels: <a href="#">ARG30345 Keap1-Nrf2-ARE Antibody Panel</a> Related products: <a href="#">Nrf 2 antibodies</a> ; <a href="#">Nrf 2 Duos / Panels</a> ; <a href="#">Anti-Rabbit IgG secondary antibodies</a> ; Related news: <a href="#">Keap1-Nrf2-ARE antibody panel is launched</a>
Research Area	Cell Biology and Cellular Response antibody; Gene Regulation antibody; Metabolism antibody; NRF-2 Nuclear Localization antibody
Calculated Mw	68 kDa
PTM	Phosphorylation of Ser-40 by PKC in response to oxidative stress dissociates NFE2L2 from its cytoplasmic inhibitor KEAP1, promoting its translocation into the nucleus.  Acetylation at Lys-596 and Lys-599 increases nuclear localization whereas deacetylation by SIRT1 enhances cytoplasmic presence.  Ubiquitinated by the KEAP1-CUL3-RBX1 E3 ubiquitin ligase complex and subject to proteasomal degradation. Ubiquitination is inhibited by sulforaphane. [UniProt]
Cellular Localization	Cytoplasm, cytosol. Nucleus. Note=Cytosolic under unstressed conditions, translocates into the nucleus upon induction by electrophilic agents. [UniProt]

Images

100-

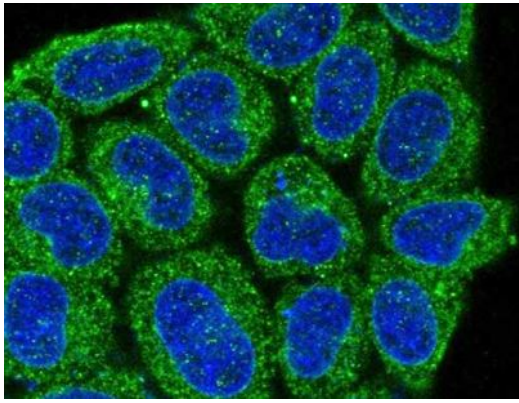


NRF2

ARG40635 anti-Nrf 2 antibody WB image

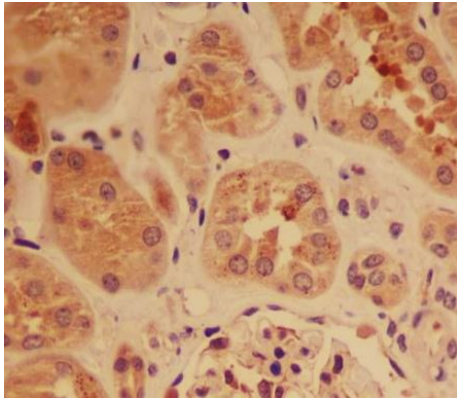
Western blot: Human CLL patient samples stained with ARG40635 anti-Nrf 2 antibody.

From Mantione ME et al. Cell death & Disease (2024), [doi: 10.1038/s41419-024-06602-z](https://doi.org/10.1038/s41419-024-06602-z), Fig. 3. H.



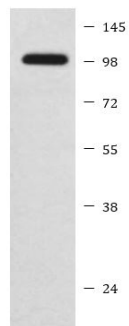
ARG40635 anti-Nrf 2 antibody ICC/IF image

Immunofluorescence: HeLa cells stained with ARG40635 anti-Nrf 2 antibody.



ARG40635 anti-Nrf 2 antibody IHC-P image

Immunohistochemistry: Paraffin-embedded Human kidney tissue stained with ARG40635 anti-Nrf 2 antibody.



HepG2

ARG40635 anti-Nrf 2 antibody WB image

Western blot: HepG2 cell lysate stained with ARG40635 anti-Nrf 2 antibody.