

ARG40597
anti-TM4SF1 antibody

Package: 50 µg

Store at: -20°C

Summary

Product Description	Rabbit Polyclonal antibody recognizes TM4SF1
Tested Reactivity	Hu, Ms
Predict Reactivity	Rat
Tested Application	IHC-P, WB
Specificity	At least three isoforms of TM4SF1 are known to exist; this antibody will recognize only the two largest isoforms. TM4SF1 antibody is predicted to not cross-react with other tetraspanin proteins.
Host	Rabbit
Clonality	Polyclonal
Isotype	IgG
Target Name	TM4SF1
Species	Human
Immunogen	An 18 amino acid synthetic peptide within the first 50 amino acids of Human TM4SF1.
Conjugation	Un-conjugated
Alternate Names	Transmembrane 4 L6 family member 1; H-L6; L6; Tumor-associated antigen L6; M3S1; TAAL6; Membrane component chromosome 3 surface marker 1

Application Instructions

Application table	Application	Dilution
	IHC-P	5 - 20 µg/ml
	WB	0.5 - 1 µg/ml
Application Note	* The dilutions indicate recommended starting dilutions and the optimal dilutions or concentrations should be determined by the scientist.	
Positive Control	Human lung	
Observed Size	28 kDa	

Properties

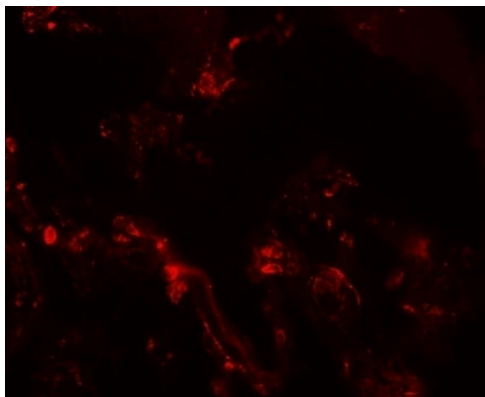
Form	Liquid
Purification	Affinity purification with immunogen.
Buffer	PBS and 0.02% Sodium azide.
Preservative	0.02% Sodium azide
Concentration	1 mg/ml

Storage instruction	For continuous use, store undiluted antibody at 2-8°C for up to a week. For long-term storage, aliquot and store at -20°C or below. Storage in frost free freezers is not recommended. Avoid repeated freeze/thaw cycles. Suggest spin the vial prior to opening. The antibody solution should be gently mixed before use.
Note	For laboratory research only, not for drug, diagnostic or other use.

Bioinformation

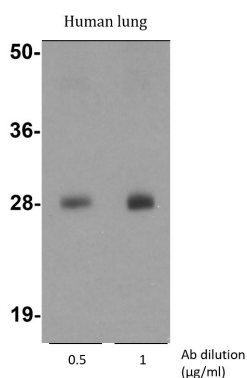
Gene Symbol	TM4SF1
Gene Full Name	transmembrane 4 L six family member 1
Background	The protein encoded by this gene is a member of the transmembrane 4 superfamily, also known as the tetraspanin family. Most of these members are cell-surface proteins that are characterized by the presence of four hydrophobic domains. The proteins mediate signal transduction events that play a role in the regulation of cell development, activation, growth and motility. This encoded protein is a cell surface antigen and is highly expressed in different carcinomas. [provided by RefSeq, Jul 2008]
Calculated Mw	22 kDa
Cellular Localization	Membrane; Multi-pass membrane protein. Note=Colocalizes with SDCBP2 in the apical region of the cell (PubMed:11102519). [UniProt]

Images



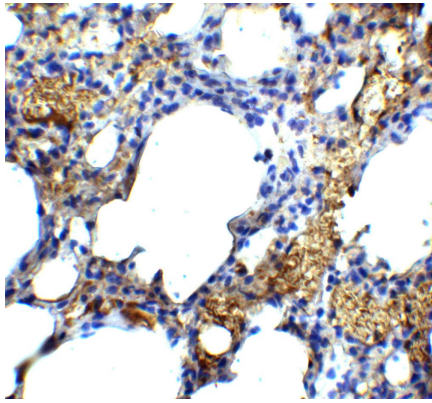
ARG40597 anti-TM4SF1 antibody IHC image

Immunohistochemistry: Human lung tissue stained with ARG40597 anti-TM4SF1 antibody at 20 µg/ml dilution.



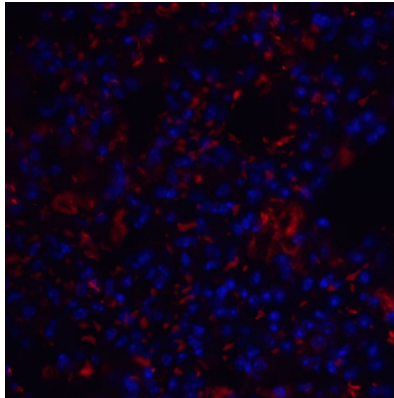
ARG40597 anti-TM4SF1 antibody WB image

Western blot: Human lung tissue lysate stained with ARG40597 anti-TM4SF1 antibody at 0.5 and 1 µg/ml dilution.



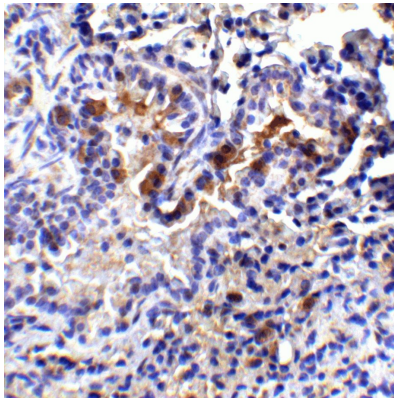
ARG40597 anti-TM4SF1 antibody IHC-P image

Immunohistochemistry: Paraffin-embedded Mouse lung tissue stained with ARG40597 anti-TM4SF1 antibody at 5 μ g/ml dilution.



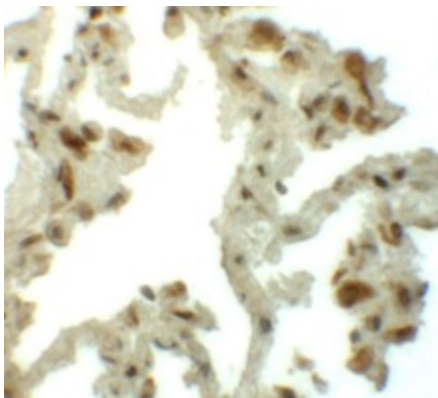
ARG40597 anti-TM4SF1 antibody IHC image

Immunohistochemistry: Mouse lung tissue stained with ARG40597 anti-TM4SF1 antibody (red) at 20 μ g/ml dilution. DAPI (blue) for nuclear staining.



ARG40597 anti-TM4SF1 antibody IHC-P image

Immunohistochemistry: Paraffin-embedded Mouse lung tissue stained with ARG40597 anti-TM4SF1 antibody at 2 μ g/ml dilution.



ARG40597 anti-TM4SF1 antibody IHC-P image

Immunohistochemistry: Paraffin-embedded Human lung tissue stained with ARG40597 anti-TM4SF1 antibody at 5 μ g/ml dilution.