

ARG40590 anti-AGTR1 / AT1 antibody

Package: 100 µl
Store at: -20°C

Summary

Product Description	Rabbit Polyclonal antibody recognizes AGTR1 / AT1
Tested Reactivity	Hu, Ms, Rat
Tested Application	WB
Host	Rabbit
Clonality	Polyclonal
Isotype	IgG
Target Name	AGTR1 / AT1
Species	Human
Immunogen	Synthetic peptide derived from Human AGTR1.
Conjugation	Un-conjugated
Alternate Names	AT1AR; Angiotensin II type-1 receptor; AT1R; Type-1 angiotensin II receptor; AT1BR; AG2S; AT2R1; HAT1R; AT1; AGTR1B; AT1B

Application Instructions

Application table	Application	Dilution
	WB	1:500 - 1:2000
Application Note	* The dilutions indicate recommended starting dilutions and the optimal dilutions or concentrations should be determined by the scientist.	

Properties

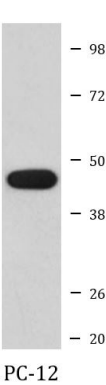
Form	Liquid
Purification	Affinity purified.
Buffer	PBS (pH 7.4), 150 mM NaCl, 0.02% Sodium azide and 50% Glycerol.
Preservative	0.02% Sodium azide
Stabilizer	50% Glycerol
Storage instruction	For continuous use, store undiluted antibody at 2-8°C for up to a week. For long-term storage, aliquot and store at -20°C. Storage in frost free freezers is not recommended. Avoid repeated freeze/thaw cycles. Suggest spin the vial prior to opening. The antibody solution should be gently mixed before use.
Note	For laboratory research only, not for drug, diagnostic or other use.

Bioinformation

Gene Symbol	AGTR1
-------------	-------

Gene Full Name	angiotensin II receptor, type 1
Background	Angiotensin II is a potent vasopressor hormone and a primary regulator of aldosterone secretion. It is an important effector controlling blood pressure and volume in the cardiovascular system. It acts through at least two types of receptors. This gene encodes the type 1 receptor which is thought to mediate the major cardiovascular effects of angiotensin II. This gene may play a role in the generation of reperfusion arrhythmias following restoration of blood flow to ischemic or infarcted myocardium. It was previously thought that a related gene, denoted as AGTR1B, existed; however, it is now believed that there is only one type 1 receptor gene in humans. Multiple alternatively spliced transcript variants have been reported for this gene. [provided by RefSeq, Jul 2012]
Function	Receptor for angiotensin II. Mediates its action by association with G proteins that activate a phosphatidylinositol-calcium second messenger system. [UniProt]
Calculated Mw	41 kDa
PTM	C-terminal Ser or Thr residues may be phosphorylated. [UniProt]
Cellular Localization	Cell membrane; Multi-pass membrane protein. [UniProt]

Images



ARG40590 anti-AGTR1 / AT1 antibody WB image

Western blot: PC-12 cell lysate stained with ARG40590 anti-AGTR1 / AT1 antibody.



ARG40590 anti-AGTR1 / AT1 antibody WB image

Western blot: Human thoracic aorta stained with ARG40590 anti-AGTR1 / AT1 antibody.

From Qiang Wu et al. Pre-Print (2024), [doi: 10.26599/FSHW.2024.9250032](https://doi.org/10.26599/FSHW.2024.9250032), Fig. 5. K.