

## ARG40566 anti-AGTR1 / AT1 antibody

Package: 50 µg  
Store at: -20°C

### Summary

Product Description	Rabbit Polyclonal antibody recognizes AGTR1 / AT1
Tested Reactivity	Hu, Ms, Rat
Predict Reactivity	Hm
Tested Application	IHC-P, WB
Host	Rabbit
Clonality	Polyclonal
Isotype	IgG
Target Name	AGTR1 / AT1
Species	Human
Immunogen	Synthetic peptide corresponding to aa. 1-28 of Human AGTR1. (MILNSSTEDGIKRIQDDCPKAGRHHYIF)
Conjugation	Un-conjugated
Alternate Names	AT1AR; Angiotensin II type-1 receptor; AT1R; Type-1 angiotensin II receptor; AT1BR; AG2S; AT2R1; HAT1R; AT1; AGTR1B; AT1B

### Application Instructions

Application table	Application	Dilution
	IHC-P	0.5 - 1 µg/ml
	WB	0.1 - 0.5 µg/ml
Application Note	IHC-P: Antigen Retrieval: By heat mediation. * The dilutions indicate recommended starting dilutions and the optimal dilutions or concentrations should be determined by the scientist.	

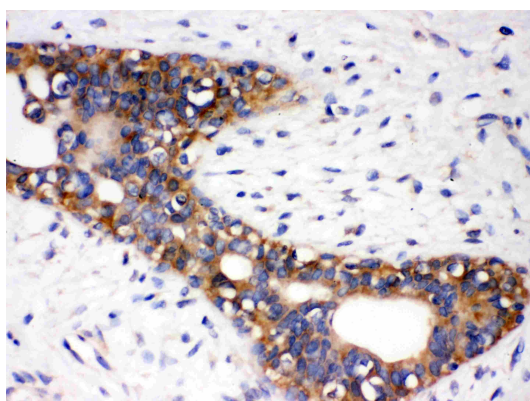
### Properties

Form	Liquid
Purification	Affinity purification with immunogen.
Buffer	0.2% Na <sub>2</sub> HPO <sub>4</sub> , 0.9% NaCl, 0.05% Sodium azide and 5% BSA.
Preservative	0.05% Sodium azide
Stabilizer	5% BSA
Concentration	0.5 mg/ml
Storage instruction	For continuous use, store undiluted antibody at 2-8°C for up to a week. For long-term storage, aliquot and store at -20°C or below. Storage in frost free freezers is not recommended. Avoid repeated freeze/thaw cycles. Suggest spin the vial prior to opening. The antibody solution should be gently mixed before use.

## Bioinformation

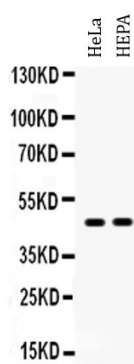
Gene Symbol	AGTR1
Gene Full Name	angiotensin II receptor, type 1
Background	Angiotensin II is a potent vasopressor hormone and a primary regulator of aldosterone secretion. It is an important effector controlling blood pressure and volume in the cardiovascular system. It acts through at least two types of receptors. This gene encodes the type 1 receptor which is thought to mediate the major cardiovascular effects of angiotensin II. This gene may play a role in the generation of reperfusion arrhythmias following restoration of blood flow to ischemic or infarcted myocardium. It was previously thought that a related gene, denoted as AGTR1B, existed; however, it is now believed that there is only one type 1 receptor gene in humans. Multiple alternatively spliced transcript variants have been reported for this gene. [provided by RefSeq, Jul 2012]
Function	Receptor for angiotensin II. Mediates its action by association with G proteins that activate a phosphatidylinositol-calcium second messenger system. [UniProt]
Calculated Mw	41 kDa
PTM	C-terminal Ser or Thr residues may be phosphorylated. [UniProt]
Cellular Localization	Cell membrane; Multi-pass membrane protein. [UniProt]

## Images



ARG40566 anti-AGTR1 / AT1 antibody IHC-P image

Immunohistochemistry: Paraffin-embedded Human mammary cancer tissue stained with ARG40566 anti-AGTR1 / AT1 antibody.



ARG40566 anti-AGTR1 / AT1 antibody WB image

Western blot: 40 µg of HeLa and HEPA whole cell lysates stained with ARG40566 anti-AGTR1 / AT1 antibody at 0.5 µg/ml dilution.