

ARG40557 anti-ATF3 antibody

Package: 50 µl
Store at: -20°C

Summary

Product Description	Rabbit Polyclonal antibody recognizes ATF3
Tested Reactivity	Hu
Predict Reactivity	Ms, Rat, Cow, Dog, Gpig, Hrs, Rb, Yeast, Zfsh
Tested Application	WB
Host	Rabbit
Clonality	Polyclonal
Isotype	IgG
Target Name	ATF3
Species	Human
Immunogen	Synthetic peptide around the middle region of Human ATF3. (within the following region: PLGVSTITAEVAPEEDERKKRRRERNKIAAAKCRNKKKEKTECLQKESEK)
Conjugation	Un-conjugated
Alternate Names	Activating transcription factor 3; Cyclic AMP-dependent transcription factor ATF-3; cAMP-dependent transcription factor ATF-3

Application Instructions

Predict Reactivity Note	Predicted Homology Based On Immunogen Sequence: Cow: 100%; Dog: 100%; Guinea Pig: 100%; Horse: 100%; Mouse: 86%; Rabbit: 93%; Rat: 93%; Yeast: 75%; Zebrafish: 80%				
Application table	<table> <tr> <th>Application</th><th>Dilution</th></tr> <tr> <td>WB</td><td>1 µg/ml</td></tr> </table>	Application	Dilution	WB	1 µg/ml
Application	Dilution				
WB	1 µg/ml				
Application Note	* The dilutions indicate recommended starting dilutions and the optimal dilutions or concentrations should be determined by the scientist.				

Properties

Form	Liquid
Purification	Affinity purified.
Buffer	PBS, 0.09% (w/v) Sodium azide and 2% Sucrose.
Preservative	0.09% (w/v) Sodium azide
Stabilizer	2% Sucrose
Concentration	Batch dependent: 0.5 - 1 mg/ml
Storage instruction	For continuous use, store undiluted antibody at 2-8°C for up to a week. For long-term storage, aliquot and store at -20°C or below. Storage in frost free freezers is not recommended. Avoid repeated freeze/thaw cycles. Suggest spin the vial prior to opening. The antibody solution should be gently mixed

before use.

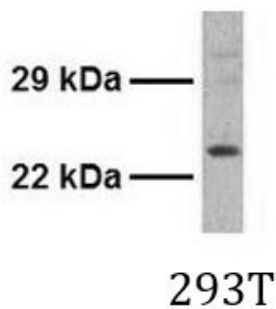
Note

For laboratory research only, not for drug, diagnostic or other use.

Bioinformation

Gene Symbol	ATF3
Gene Full Name	activating transcription factor 3
Background	This gene encodes a member of the mammalian activation transcription factor/cAMP responsive element-binding (CREB) protein family of transcription factors. This gene is induced by a variety of signals, including many of those encountered by cancer cells, and is involved in the complex process of cellular stress response. Multiple transcript variants encoding different isoforms have been found for this gene. It is possible that alternative splicing of this gene may be physiologically important in the regulation of target genes. [provided by RefSeq, Apr 2011]
Function	This protein binds the cAMP response element (CRE) (consensus: 5'-GTGACGT[AC][AG]-3'), a sequence present in many viral and cellular promoters. Represses transcription from promoters with ATF sites. It may repress transcription by stabilizing the binding of inhibitory cofactors at the promoter. Isoform 2 activates transcription presumably by sequestering inhibitory cofactors away from the promoters. [UniProt]
Calculated Mw	21 kDa
Cellular Localization	Nucleus. [UniProt]

Images



ARG40557 anti-ATF3 antibody WB image

Western blot: 293T cell lysate stained with ARG40557 anti-ATF3 antibody at 1 µg/ml dilution.