

## ARG40458 anti-MSRA antibody

Package: 100 µl  
Store at: -20°C

### Summary

Product Description	Rabbit Polyclonal antibody recognizes MSRA
Tested Reactivity	Hu, Ms, Rat
Tested Application	ICC/IF, WB
Host	Rabbit
Clonality	Polyclonal
Isotype	IgG
Target Name	MSRA
Species	Human
Immunogen	Recombinant fusion protein corresponding to aa. 24-235 of Human MSRA (NP_036463.1).
Conjugation	Un-conjugated
Alternate Names	EC 1.8.4.11; Peptide Met; O; Peptide-methionine; Protein-methionine-S-oxide reductase; Mitochondrial peptide methionine sulfoxide reductase; S; PMSR

### Application Instructions

Application table	Application	Dilution
	ICC/IF	1:50 - 1:200
	WB	1:500 - 1:2000
Application Note	* The dilutions indicate recommended starting dilutions and the optimal dilutions or concentrations should be determined by the scientist.	
Positive Control	Rat kidney	
Observed Size	26 kDa	

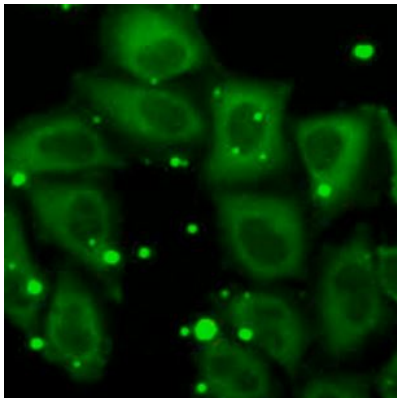
### Properties

Form	Liquid
Purification	Affinity purified.
Buffer	PBS (pH 7.3), 0.02% Sodium azide and 50% Glycerol.
Preservative	0.02% Sodium azide
Stabilizer	50% Glycerol
Storage instruction	For continuous use, store undiluted antibody at 2-8°C for up to a week. For long-term storage, aliquot and store at -20°C. Storage in frost free freezers is not recommended. Avoid repeated freeze/thaw cycles. Suggest spin the vial prior to opening. The antibody solution should be gently mixed before use.
Note	For laboratory research only, not for drug, diagnostic or other use.

Bioinformation

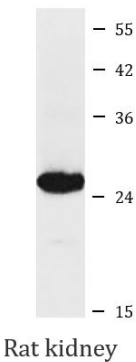
Gene Symbol	MSRA
Gene Full Name	methionine sulfoxide reductase A
Background	This gene encodes a ubiquitous and highly conserved protein that carries out the enzymatic reduction of methionine sulfoxide to methionine. Human and animal studies have shown the highest levels of expression in kidney and nervous tissue. The protein functions in the repair of oxidatively damaged proteins to restore biological activity. Alternative splicing results in multiple transcript variants. [provided by RefSeq, May 2014]
Function	Has an important function as a repair enzyme for proteins that have been inactivated by oxidation. Catalyzes the reversible oxidation-reduction of methionine sulfoxide in proteins to methionine. [UniProt]
Calculated Mw	26 kDa
Cellular Localization	Isoform 1: Mitochondrion. Isoform 2: Cytoplasm. Isoform 3: Cytoplasm. Nucleus. Isoform 5: Cytoplasm. Membrane; Lipid-anchor. [UniProt]

Images



ARG40458 anti-MSRA antibody ICC/IF image

Immunofluorescence: U2OS cells stained with ARG40458 anti-MSRA antibody.



ARG40458 anti-MSRA antibody WB image

Western blot: 25 µg of Rat kidney lysate stained with ARG40458 anti-MSRA antibody at 1:1000 dilution.