

ARG40375 anti-LDHA / Lactate Dehydrogenase antibody

Package: 50 µg
Store at: -20°C

Summary

Product Description	Rabbit Polyclonal antibody recognizes LDHA / Lactate Dehydrogenase
Tested Reactivity	Hu, Ms, Rat
Tested Application	FACS, ICC/IF, IHC-P, WB
Host	Rabbit
Clonality	Polyclonal
Isotype	IgG
Target Name	LDHA / Lactate Dehydrogenase
Species	Human
Immunogen	Recombinant protein corresponding to A2-R106 of Human LDHA.
Conjugation	Un-conjugated
Alternate Names	PIG19; Cell proliferation-inducing gene 19 protein; LDH muscle subunit; Renal carcinoma antigen NY-REN-59; HEL-S-133P; L-lactate dehydrogenase A chain; GSD11; LDHM; EC 1.1.1.27; LDH-M; LDH-A

Application Instructions

Application table	Application	Dilution
	FACS	1:150 - 1:500
	ICC/IF	1:200 - 1:1000
	IHC-P	1:200 - 1:1000
	WB	1:500 - 1:2000
Application Note	IHC-P: Antigen Retrieval: By heat mediation. * The dilutions indicate recommended starting dilutions and the optimal dilutions or concentrations should be determined by the scientist.	
Observed Size	37 kDa	

Properties

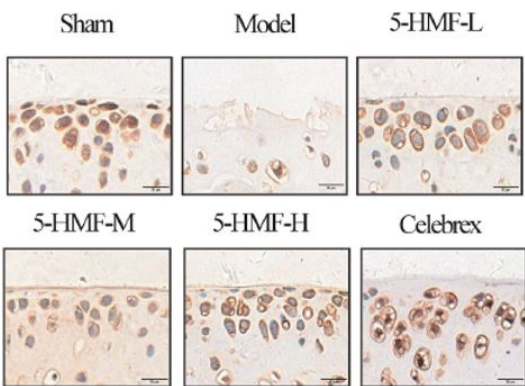
Form	Liquid
Purification	Affinity purification with immunogen.
Buffer	0.2% Na ₂ HPO ₄ , 0.9% NaCl, 0.05% Sodium azide and 5% BSA.
Preservative	0.05% Sodium azide
Stabilizer	5% BSA
Concentration	0.5 mg/ml

Storage instruction	For continuous use, store undiluted antibody at 2-8°C for up to a week. For long-term storage, aliquot and store at -20°C or below. Storage in frost free freezers is not recommended. Avoid repeated freeze/thaw cycles. Suggest spin the vial prior to opening. The antibody solution should be gently mixed before use.
Note	For laboratory research only, not for drug, diagnostic or other use.

Bioinformation

Gene Symbol	LDHA
Gene Full Name	lactate dehydrogenase A
Background	The protein encoded by this gene catalyzes the conversion of L-lactate and NAD to pyruvate and NADH in the final step of anaerobic glycolysis. The protein is found predominantly in muscle tissue and belongs to the lactate dehydrogenase family. Mutations in this gene have been linked to exertional myoglobinuria. Multiple transcript variants encoding different isoforms have been found for this gene. The human genome contains several non-transcribed pseudogenes of this gene. [provided by RefSeq, Sep 2008]
Research Area	Cancer antibody; Metabolism antibody; Signaling Transduction antibody; Lactate dehydrogenase antibody; Warburg Effect signaling pathway antibody
Calculated Mw	37 kDa
PTM	ISGylated. [UniProt]
Cellular Localization	Cytoplasm. [UniProt]

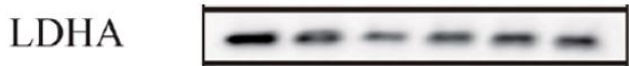
Images



ARG40375 anti-LDHA / Lactate Dehydrogenase antibody IHC-P image

Immunohistochemistry: Mouse knee joint stained with ARG40375 anti-LDHA / Lactate Dehydrogenase antibody.

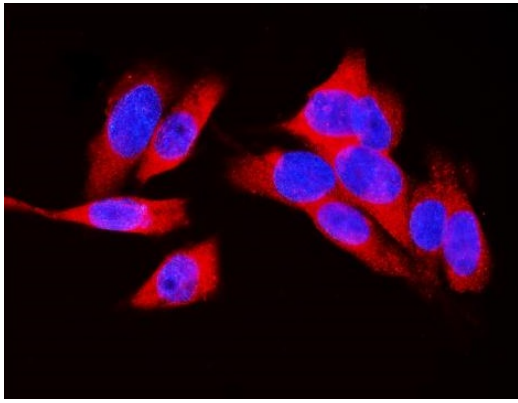
From Wang X et al. Phytomedicine. (2025), [doi: 10.1016/j.phymed.2025.156499](https://doi.org/10.1016/j.phymed.2025.156499), Fig. 2C.



ARG40375 anti-LDHA / Lactate Dehydrogenase antibody WB image

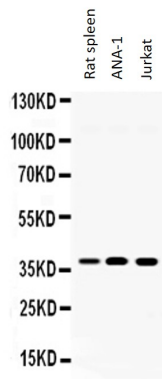
Western blot: Mouse cartilage stained with ARG40375 anti-LDHA / Lactate Dehydrogenase antibody.

From Wang X et al. Phytomedicine. (2025), [doi: 10.1016/j.phymed.2025.156499](https://doi.org/10.1016/j.phymed.2025.156499), Fig. 4H.



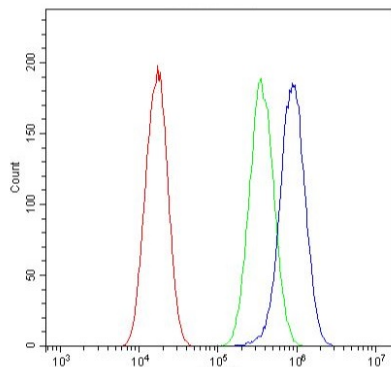
ARG40375 anti-LDHA / Lactate Dehydrogenase antibody ICC/IF image

Immunofluorescence: U2OS cells were blocked with 10% goat serum and then stained with ARG40375 anti-LDHA / Lactate Dehydrogenase antibody (red) at 2 µg/ml dilution, overnight at 4°C. DAPI (blue) for nuclear staining.



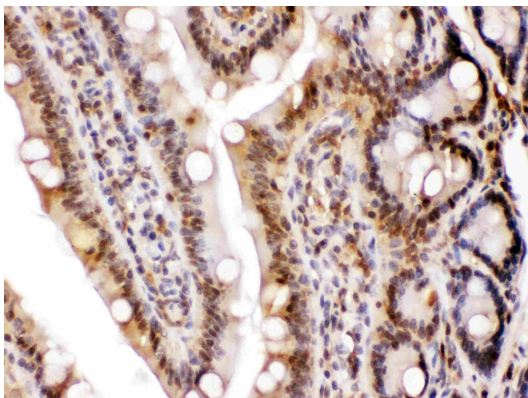
ARG40375 anti-LDHA / Lactate Dehydrogenase antibody WB image

Western blot: Rat spleen, ANA-1 and Jurkat whole cell lysates stained with ARG40375 anti-LDHA / Lactate Dehydrogenase antibody at 0.5 µg/ml dilution.



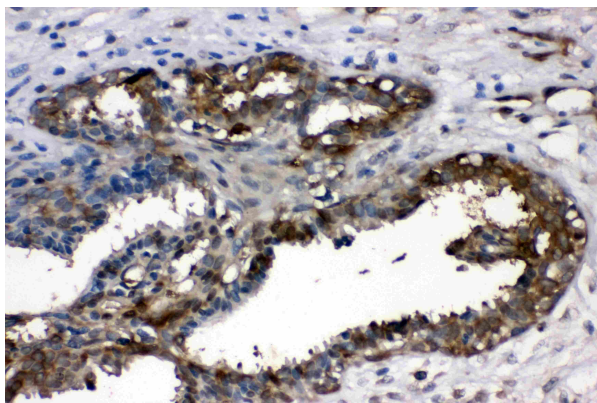
ARG40375 anti-LDHA / Lactate Dehydrogenase antibody FACS image

Flow Cytometry: A549 cells were blocked with 10% normal Goat serum and then stained with ARG40375 anti-LDHA / Lactate Dehydrogenase antibody (blue) at 1 µg/10⁶ cells for 30 min at 20°C, followed by incubation with DyLight®488 labelled secondary antibody. Isotype control antibody (green) was Rabbit IgG (1 µg/10⁶ cells) used under the same conditions. Unlabelled sample (red) was also used as a control.



ARG40375 anti-LDHA / Lactate Dehydrogenase antibody IHC-P image

Immunohistochemistry: Paraffin-embedded Rat intestine stained with ARG40375 anti-LDHA / Lactate Dehydrogenase antibody at 1 µg/ml dilution.



ARG40375 anti-LDHA / Lactate Dehydrogenase antibody IHC-P image

Immunohistochemistry: Paraffin-embedded Human mammary cancer tissue stained with ARG40375 anti-LDHA / Lactate Dehydrogenase antibody at 1 µg/ml dilution.