

ARG40364 anti-INSRR / IRR (alpha chain) antibody

Package: 100 µl
Store at: -20°C

Summary

Product Description	Rabbit Polyclonal antibody recognizes INSRR / IRR (alpha chain)
Tested Reactivity	Hu, Ms, Rat
Tested Application	IHC-P, WB
Host	Rabbit
Clonality	Polyclonal
Isotype	IgG
Target Name	INSRR / IRR (alpha chain)
Species	Human
Immunogen	KLH-conjugated synthetic peptide between aa. 27-57 of Human INSRR.
Conjugation	Un-conjugated
Alternate Names	Insulin receptor-related protein; IRR; EC 2.7.10.1; IR-related receptor; Insulin Receptor R

Application Instructions

Application table	Application	Dilution
	IHC-P	1:10 - 1:50
	WB	1:1000
Application Note	* The dilutions indicate recommended starting dilutions and the optimal dilutions or concentrations should be determined by the scientist.	
Positive Control	SH-SY5Y	

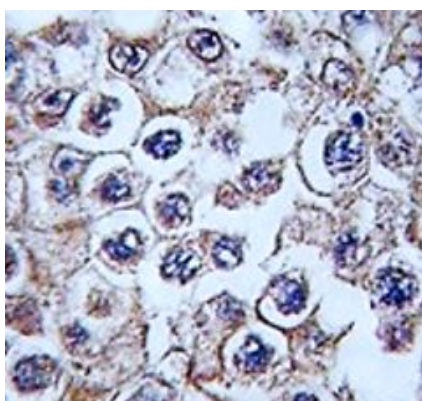
Properties

Form	Liquid
Purification	Purification with Protein A and immunogen peptide.
Buffer	PBS and 0.09% (W/V) Sodium azide.
Preservative	0.09% (W/V) Sodium azide.
Storage instruction	For continuous use, store undiluted antibody at 2-8°C for up to a week. For long-term storage, aliquot and store at -20°C or below. Storage in frost free freezers is not recommended. Avoid repeated freeze/thaw cycles. Suggest spin the vial prior to opening. The antibody solution should be gently mixed before use.
Note	For laboratory research only, not for drug, diagnostic or other use.

Bioinformation

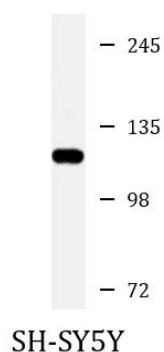
Gene Symbol	INSRR
Gene Full Name	insulin receptor-related receptor
Function	Receptor with tyrosine-protein kinase activity. Functions as a pH sensing receptor which is activated by increased extracellular pH. Activates an intracellular signaling pathway that involves IRS1 and AKT1/PKB. [UniProt]
Calculated Mw	144 kDa
PTM	Autophosphorylated on tyrosine residues between pH 7.9 and pH 10.5. [UniProt]
Cellular Localization	Membrane; Single-pass type I membrane protein. [UniProt]

Images



ARG40364 anti-INSRR / IRR (alpha chain) antibody IHC-P image

Immunohistochemistry: Formalin-fixed and paraffin-embedded Human testis stained with ARG40364 anti-INSRR / IRR (alpha chain) antibody.



ARG40364 anti-INSRR / IRR (alpha chain) antibody WB image

Western blot: 20 µg of SH-SY5Y whole cell lysate stained with ARG40364 anti-INSRR / IRR (alpha chain) antibody at 1:2000 dilution.