

## ARG40332 anti-Lrp2 / Megalin antibody

Package: 100 µl  
Store at: -20°C

### Summary

Product Description	Rabbit Polyclonal antibody recognizes Lrp2 / Megalin
Tested Reactivity	Hu, Ms, Rat
Tested Application	ICC/IF, IHC-P, WB
Host	Rabbit
Clonality	Polyclonal
Isotype	IgG
Target Name	Lrp2 / Megalin
Species	Human
Immunogen	Recombinant fusion protein corresponding to aa. 4446-4655 of Human Lrp2 (NP_004516.2).
Conjugation	Un-conjugated
Alternate Names	GP330; gp330; Glycoprotein 330; LRP-2; Megalin; Low-density lipoprotein receptor-related protein 2; DBS

### Application Instructions

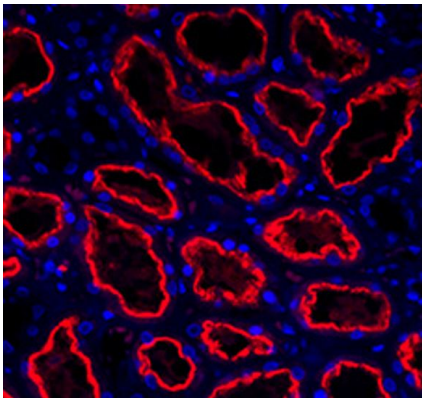
Application table	Application	Dilution
	ICC/IF	1:50 - 1:200
	IHC-P	1:50 - 1:200
	WB	1:200 - 1:1000
Application Note	* The dilutions indicate recommended starting dilutions and the optimal dilutions or concentrations should be determined by the scientist.	

### Properties

Form	Liquid
Purification	Affinity purified.
Buffer	PBS (pH 7.3), 0.02% Sodium azide and 50% Glycerol.
Preservative	0.02% Sodium azide
Stabilizer	50% Glycerol
Storage instruction	For continuous use, store undiluted antibody at 2-8°C for up to a week. For long-term storage, aliquot and store at -20°C. Storage in frost free freezers is not recommended. Avoid repeated freeze/thaw cycles. Suggest spin the vial prior to opening. The antibody solution should be gently mixed before use.
Note	For laboratory research only, not for drug, diagnostic or other use.

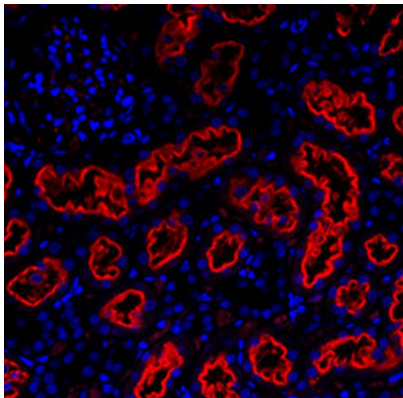
Gene Symbol	LRP2
Gene Full Name	low density lipoprotein receptor-related protein 2
Background	The protein encoded by this gene, low density lipoprotein-related protein 2 (LRP2) or megalin, is a multi-ligand endocytic receptor that is expressed in many different tissues but primarily in absorptive epithelial tissues such as the kidney. This glycoprotein has a large amino-terminal extracellular domain, a single transmembrane domain, and a short carboxy-terminal cytoplasmic tail. The extracellular ligand-binding-domains bind diverse macromolecules including albumin, apolipoproteins B and E, and lipoprotein lipase. The LRP2 protein is critical for the reuptake of numerous ligands, including lipoproteins, sterols, vitamin-binding proteins, and hormones. This protein also has a role in cell-signaling; extracellular ligands include parathyroid hormones and the morphogen sonic hedgehog while cytosolic ligands include MAP kinase scaffold proteins and JNK interacting proteins. Recycling of this membrane receptor is regulated by phosphorylation of its cytoplasmic domain. Mutations in this gene cause Donnai-Barrow syndrome (DBS) and facio-oculoacoustico-renal syndrome (FOAR).[provided by RefSeq, Aug 2009]
Function	Acts together with cubilin to mediate HDL endocytosis (By similarity). May participate in regulation of parathyroid-hormone and para-thyroid-hormone-related protein release. [UniProt]
Calculated Mw	522 kDa
Cellular Localization	Apical cell membrane; Single-pass type I membrane protein. Endosome lumen. Membrane, coated pit. Cell projection, dendrite. Cell projection, axon. Note=Localizes to brush border membranes in the kidney. In the endolymphatic sac of the inner ear, located in the lumen of endosomes as a soluble form. [UniProt]

Images



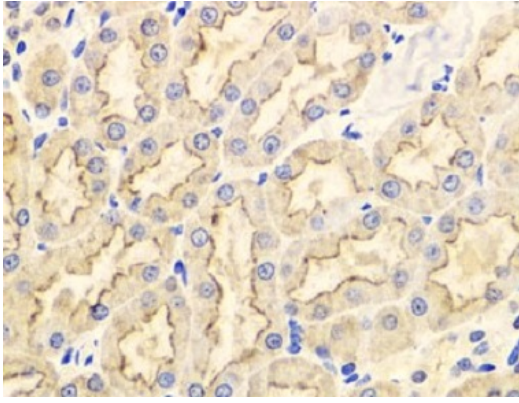
ARG40332 anti-Lrp2 / Megalin antibody ICC/IF image

Immunofluorescence: Human kidney stained with ARG40332 anti-Lrp2 / Megalin antibody at 1:500 dilution.



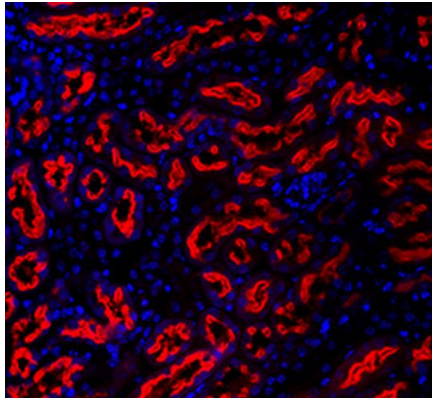
ARG40332 anti-Lrp2 / Megalin antibody ICC/IF image

Immunofluorescence: Rat kidney stained with ARG40332 anti-Lrp2 / Megalin antibody at 1:500 dilution.



ARG40332 anti-Lrp2 / Megalin antibody IHC-P image

Immunohistochemistry: Paraffin-embedded Rat kidney stained with ARG40332 anti-Lrp2 / Megalin antibody at 1:100 dilution.



ARG40332 anti-Lrp2 / Megalin antibody ICC/IF image

Immunofluorescence: Mouse kidney stained with ARG40332 anti-Lrp2 / Megalin antibody at 1:500 dilution.