

## ARG40321 anti-PPIG antibody

Package: 100 µl  
Store at: -20°C

### Summary

Product Description	Rabbit Polyclonal antibody recognizes PPIG
Tested Reactivity	Hu
Tested Application	WB
Host	Rabbit
Clonality	Polyclonal
Isotype	IgG
Target Name	PPIG
Species	Human
Immunogen	Synthetic peptide within aa. 1-100 of Human PPIG (NP_004783.2).
Conjugation	Un-conjugated
Alternate Names	Peptidyl-prolyl isomerase G; CARS-cyclophilin; CYP; Cyclophilin G; SCAF10; SRCyp; PPlase G; CASP10; SR-cyclophilin; CARS-Cyp; SRCyp; Peptidyl-prolyl cis-trans isomerase G; EC 5.2.1.8; SR-cyp; Clk-associating RS-cyclophilin; Rotamase G

### Application Instructions

Application table	<table> <tr> <th>Application</th><th>Dilution</th></tr> <tr> <td>WB</td><td>1:500 - 1:2000</td></tr> </table>	Application	Dilution	WB	1:500 - 1:2000
Application	Dilution				
WB	1:500 - 1:2000				
Application Note	* The dilutions indicate recommended starting dilutions and the optimal dilutions or concentrations should be determined by the scientist.				
Positive Control	HepG2				
Observed Size	~ 120 kDa				

### Properties

Form	Liquid
Purification	Affinity purified.
Buffer	PBS (pH 7.3), 0.02% Sodium azide and 50% Glycerol.
Preservative	0.02% Sodium azide
Stabilizer	50% Glycerol
Storage instruction	For continuous use, store undiluted antibody at 2-8°C for up to a week. For long-term storage, aliquot and store at -20°C. Storage in frost free freezers is not recommended. Avoid repeated freeze/thaw cycles. Suggest spin the vial prior to opening. The antibody solution should be gently mixed before use.
Note	For laboratory research only, not for drug, diagnostic or other use.

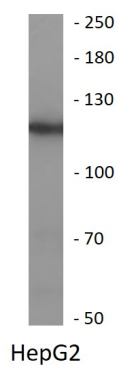
## Bioinformation

---

Gene Symbol	PPIG
Gene Full Name	peptidylprolyl isomerase G (cyclophilin G)
Function	PPIases accelerate the folding of proteins. It catalyzes the cis-trans isomerization of proline imidic peptide bonds in oligopeptides. May be implicated in the folding, transport, and assembly of proteins. May play an important role in the regulation of pre-mRNA splicing. [UniProt]
Calculated Mw	89 kDa
Cellular Localization	Nucleus matrix. Nucleus speckle. Note=Colocalizes with RNA splicing factors at nuclear speckles. [UniProt]

## Images

---



ARG40321 anti-PPIG antibody WB image

Western blot: 25 µg of HepG2 cell lysate stained with ARG40321 anti-PPIG antibody at 1:1000 dilution.