

ARG40281 anti-Lysozyme antibody

Package: 50 µg
Store at: -20°C

Summary

Product Description	Rabbit Polyclonal antibody recognizes Lysozyme
Tested Reactivity	Hu, Ms, Rat
Tested Application	IHC-P, WB
Host	Rabbit
Clonality	Polyclonal
Isotype	IgG
Target Name	Lysozyme
Species	Human
Immunogen	Synthetic peptide corresponding to aa. 106-141 of Human Lysozyme. (NIADAVACAKRVVRDPQGIRAWVAWRNRCQNRDVRQ)
Conjugation	Un-conjugated
Alternate Names	EC 3.2.1.17; Lysozyme C; LZM; 1,4-beta-N-acetylmuramidase C

Application Instructions

Application table	Application	Dilution
	IHC-P	0.5 - 1 µg/ml
	WB	0.1 - 0.5 µg/ml
Application Note	IHC-P: Antigen Retrieval: Heat mediation was performed in Citrate buffer (pH 6.0) for 20 min. * The dilutions indicate recommended starting dilutions and the optimal dilutions or concentrations should be determined by the scientist.	
Observed Size	~ 19 kDa	

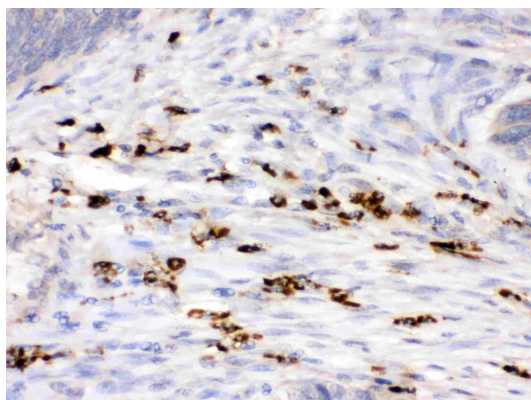
Properties

Form	Liquid
Purification	Affinity purification with immunogen.
Buffer	0.2% Na ₂ HPO ₄ , 0.9% NaCl, 0.05% Sodium azide and 5% BSA.
Preservative	0.05% Sodium azide
Stabilizer	5% BSA
Concentration	0.5 mg/ml
Storage instruction	For continuous use, store undiluted antibody at 2-8°C for up to a week. For long-term storage, aliquot and store at -20°C or below. Storage in frost free freezers is not recommended. Avoid repeated freeze/thaw cycles. Suggest spin the vial prior to opening. The antibody solution should be gently mixed before use.

Bioinformation

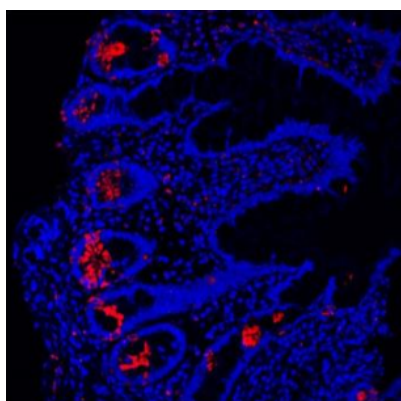
Gene Symbol	LYZ
Gene Full Name	lysozyme
Background	This gene encodes human lysozyme, whose natural substrate is the bacterial cell wall peptidoglycan (cleaving the beta[1-4]glycosidic linkages between N-acetylmuramic acid and N-acetylglucosamine). Lysozyme is one of the antimicrobial agents found in human milk, and is also present in spleen, lung, kidney, white blood cells, plasma, saliva, and tears. The protein has antibacterial activity against a number of bacterial species. Missense mutations in this gene have been identified in heritable renal amyloidosis. [provided by RefSeq, Oct 2014]
Function	Lysozymes have primarily a bacteriolytic function; those in tissues and body fluids are associated with the monocyte-macrophage system and enhance the activity of immunoagents. [UniProt]
Calculated Mw	17 kDa
Cellular Localization	Secreted. [UniProt]

Images



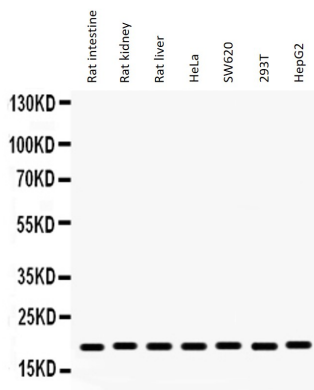
ARG40281 anti-Lysozyme antibody IHC-P image

Immunohistochemistry: Paraffin-embedded Human intestinal cancer stained with ARG40281 anti-Lysozyme antibody.



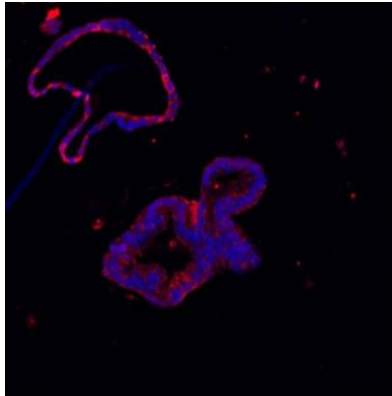
ARG40281 anti-Lysozyme antibody IHC-P image

Immunohistochemistry: Paraffin-embedded Human ileum tissue. Antigen Retrieval: Heat mediation was performed in Citrate buffer (pH 6.0) for 20 min. The tissue section was blocked with 10% goat serum. The tissue section was then stained with ARG40281 anti-Lysozyme antibody (red) at 5 µg/ml dilution, overnight at 4°C. The section was counterstained with DAPI (blue).



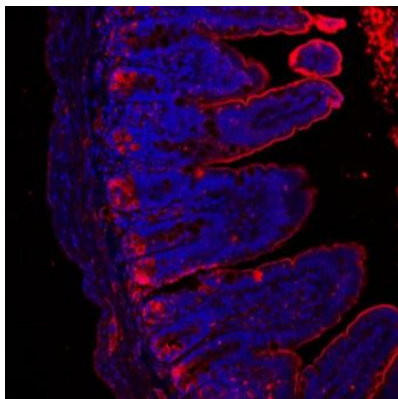
ARG40281 anti-Lysozyme antibody WB image

Western blot: 50 µg of Rat intestine, 50 µg of Rat kidney, 50 µg of Rat liver, 40 µg of HeLa, 40 µg of SW620, 40 µg of 293T and 40 µg of HepG2 whole cell lysates stained with ARG40281 anti-Lysozyme antibody at 0.5 µg/ml dilution.



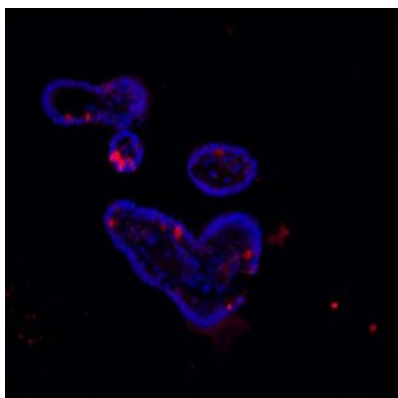
ARG40281 anti-Lysozyme antibody IHC-P image

Immunohistochemistry: Paraffin-embedded Human colon organoid tissue. Antigen Retrieval: Heat mediation was performed in Citrate buffer (pH 6.0) for 20 min. The tissue section was blocked with 10% goat serum. The tissue section was then stained with ARG40281 anti-Lysozyme antibody (red) at 5 µg/ml dilution, overnight at 4°C. The section was counterstained with DAPI (blue).



ARG40281 anti-Lysozyme antibody IHC-P image

Immunohistochemistry: Paraffin-embedded Mouse ileum tissue. Antigen Retrieval: Heat mediation was performed in Citrate buffer (pH 6.0) for 20 min. The tissue section was blocked with 10% goat serum. The tissue section was then stained with ARG40281 anti-Lysozyme antibody (red) at 5 µg/ml dilution, overnight at 4°C. The section was counterstained with DAPI (blue).



ARG40281 anti-Lysozyme antibody IHC-P image

Immunohistochemistry: Paraffin-embedded Mouse ileum organoid tissue. Antigen Retrieval: Heat mediation was performed in Citrate buffer (pH 6.0) for 20 min. The tissue section was blocked with 10% goat serum. The tissue section was then stained with ARG40281 anti-Lysozyme antibody (red) at 5 µg/ml dilution, overnight at 4°C. The section was counterstained with DAPI (blue).