

## ARG40256 anti-Calbindin antibody

Package: 100 µl  
Store at: -20°C

### Summary

Product Description	Rabbit Polyclonal antibody recognizes Calbindin
Tested Reactivity	Hu, Ms, Rat
Predict Reactivity	Rat
Tested Application	IHC-P, WB
Host	Rabbit
Clonality	Polyclonal
Isotype	IgG
Target Name	Calbindin
Species	Human
Immunogen	Recombinant fusion protein corresponding to aa. 1-261 of Human Calbindin (NP_004920.1).
Conjugation	Un-conjugated
Alternate Names	Vitamin D-dependent calcium-binding protein, avian-type; Calbindin; CALB; Calbindin D28; D-28K

### Application Instructions

Application table	Application	Dilution
	IHC-P	1:50 - 1:100
	WB	1:500 - 1:1000
Application Note	* The dilutions indicate recommended starting dilutions and the optimal dilutions or concentrations should be determined by the scientist.	
Positive Control	A549 and Mouse brain	
Observed Size	~ 30 kDa	

### Properties

Form	Liquid
Purification	Affinity purified.
Buffer	PBS (pH 7.3), 0.02% Sodium azide and 50% Glycerol.
Preservative	0.02% Sodium azide
Stabilizer	50% Glycerol
Storage instruction	For continuous use, store undiluted antibody at 2-8°C for up to a week. For long-term storage, aliquot and store at -20°C. Storage in frost free freezers is not recommended. Avoid repeated freeze/thaw cycles. Suggest spin the vial prior to opening. The antibody solution should be gently mixed before use.

Bioinformation

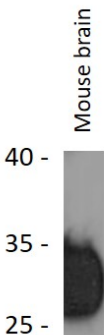
Gene Symbol	CALB1
Gene Full Name	calbindin 1, 28kDa
Background	The protein encoded by this gene is a member of the calcium-binding protein superfamily that includes calmodulin and troponin C. Originally described as a 27 kDa protein, it is now known to be a 28 kDa protein. It contains four active calcium-binding domains, and has two modified domains that are thought to have lost their calcium binding capability. This protein is thought to buffer entry of calcium upon stimulation of glutamate receptors. Depletion of this protein was noted in patients with Huntington disease. [provided by RefSeq, Jan 2015]
Function	Buffers cytosolic calcium. May stimulate a membrane Ca(2+)-ATPase and a 3',5'-cyclic nucleotide phosphodiesterase. [UniProt]
Calculated Mw	30 kDa

Images



ARG40256 anti-Calbindin antibody WB image

Western blot: 25 µg of A549 cell lysate stained with ARG40256 anti-Calbindin antibody at 1:1000 dilution.



ARG40256 anti-Calbindin antibody WB image

Western blot: 25 µg of Mouse brain lysate stained with ARG40256 anti-Calbindin antibody at 1:1000 dilution.