

## ARG40241 anti-FOXRED2 antibody

Package: 50 µg  
Store at: -20°C

### Summary

Product Description	Rabbit Polyclonal antibody recognizes FOXRED2
Tested Reactivity	Hu
Tested Application	ICC/IF, WB
Host	Rabbit
Clonality	Polyclonal
Isotype	IgG
Target Name	FOXRED2
Species	Human
Immunogen	A 17 amino acid peptide within aa. 70 - 120 of Human FOXRED2.
Conjugation	Un-conjugated
Alternate Names	Endoplasmic reticulum flavoprotein associated with degradation; FAD-dependent oxidoreductase domain-containing protein 2; ERFAD

### Application Instructions

Application table	Application	Dilution
	ICC/IF	20 µg/ml
	WB	1 µg/ml
Application Note	* The dilutions indicate recommended starting dilutions and the optimal dilutions or concentrations should be determined by the scientist.	
Positive Control	Human lung	
Observed Size	~ 70 kDa	

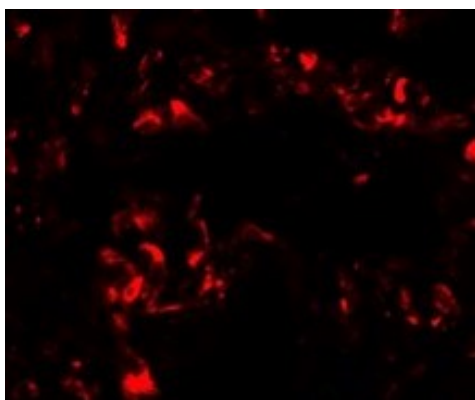
### Properties

Form	Liquid
Purification	Affinity purification with immunogen.
Buffer	PBS and 0.02% Sodium azide
Preservative	0.02% Sodium azide
Concentration	1 mg/ml
Storage instruction	For continuous use, store undiluted antibody at 2-8°C for up to a week. For long-term storage, aliquot and store at -20°C or below. Storage in frost free freezers is not recommended. Avoid repeated freeze/thaw cycles. Suggest spin the vial prior to opening. The antibody solution should be gently mixed before use.

## Bioinformation

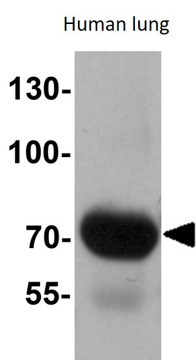
Gene Symbol	FOXRED2
Gene Full Name	FAD-dependent oxidoreductase domain containing 2
Function	Probable flavoprotein which may function in endoplasmic reticulum associated degradation (ERAD). May bind non-native proteins in the endoplasmic reticulum and target them to the ubiquitination machinery for subsequent degradation. [UniProt]
Calculated Mw	78 kDa
PTM	N-glycosylated. [UniProt]
Cellular Localization	Endoplasmic reticulum lumen. [UniProt]

## Images



ARG40241 anti-FOXRED2 antibody ICC/IF image

Immunofluorescence: Human lung cells stained with ARG40241 anti-FOXRED2 antibody at 20 µg/ml dilution.



ARG40241 anti-FOXRED2 antibody WB image

Western blot: Human lung tissue lysate stained with ARG40241 anti-FOXRED2 antibody at 1 µg/ml dilution.