

ARG40240 anti-Shroom 3 antibody

Package: 50 µg
Store at: -20°C

Summary

Product Description	Rabbit Polyclonal antibody recognizes Shroom 3
Tested Reactivity	Hu
Tested Application	WB
Specificity	Shroom 3 antibody is human specific. At least four isoforms of Shroom 3 are known to exist; this antibody will detect all four isoforms. Shroom 3 antibody is predicted to not cross-react with other Shroom family members.
Host	Rabbit
Clonality	Polyclonal
Isotype	IgG
Target Name	Shroom 3
Species	Human
Immunogen	An 18 amino acid peptide within aa. 850 - 900 of Human Shroom 3.
Conjugation	Un-conjugated
Alternate Names	ShrmL; Shroom-related protein; hShrmL; Protein Shroom3; SHRM; MSTP013; APXL3

Application Instructions

Application table	Application	Dilution
	WB	1 - 2 µg/ml
Application Note	* The dilutions indicate recommended starting dilutions and the optimal dilutions or concentrations should be determined by the scientist.	
Positive Control	SK-N-SH cell	

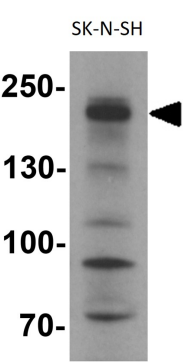
Properties

Form	Liquid
Purification	Affinity purification with immunogen.
Buffer	PBS and 0.02% Sodium azide
Preservative	0.02% Sodium azide
Concentration	1 mg/ml
Storage instruction	For continuous use, store undiluted antibody at 2-8°C for up to a week. For long-term storage, aliquot and store at -20°C or below. Storage in frost free freezers is not recommended. Avoid repeated freeze/thaw cycles. Suggest spin the vial prior to opening. The antibody solution should be gently mixed before use.
Note	For laboratory research only, not for drug, diagnostic or other use.

Bioinformation

Gene Symbol	SHROOM3
Gene Full Name	shroom family member 3
Background	This gene encodes a PDZ-domain-containing protein that belongs to a family of Shroom-related proteins. This protein may be involved in regulating cell shape in certain tissues. A similar protein in mice is required for proper neurulation. [provided by RefSeq, Jan 2011]
Function	Controls cell shape changes in the neuroepithelium during neural tube closure. Induces apical constriction in epithelial cells by promoting the apical accumulation of F-actin and myosin II, and probably by bundling stress fibers. Induces apicobasal cell elongation by redistributing gamma-tubulin and directing the assembly of robust apicobasal microtubule arrays (By similarity). [UniProt]
Calculated Mw	217 kDa
Cellular Localization	Cell junction, adherens junction. Cytoplasm, cytoskeleton. Note=Colocalizes with F-actin in stress fibers and adherens junctions. [UniProt]

Images



ARG40240 anti-Shroom 3 antibody WB image

Western blot: SK-N-SH cell lysate stained with ARG40240 anti-Shroom 3 antibody at 1 µg/ml dilution.