

ARG40177 anti-IL37 / IL1F7 / FIL1 zeta antibody

Package: 50 µg
Store at: -20°C

Summary

Product Description	Rabbit Polyclonal antibody recognizes IL37 / IL1F7 / FIL1 zeta
Tested Reactivity	Hu
Tested Application	IHC-P, WB
Specificity	The antibody is Human specific. Multiple isoforms of IL37 are known to exist. The antibody will only detect the largest isoform. The antibody is predicted to not cross-react with IL36.
Host	Rabbit
Clonality	Polyclonal
Isotype	IgG
Target Name	IL37 / IL1F7 / FIL1 zeta
Species	Human
Immunogen	A 17 amino acid peptide within aa. 30-80 of Human IL37.
Conjugation	Un-conjugated
Alternate Names	Interleukin-1 zeta; IL-1 zeta; FIL1; Interleukin-37; IL-1X; IL-1F7; FIL1 zeta; IL-1H4; Interleukin-1 homolog 4; FIL1Z; IL1H4; Interleukin-1 family member 7; Interleukin-23; IL-37; FIL1(ZETA); IL-1H; IL-1RP1; IL1RP1; IL1F7; Interleukin-1-related protein

Application Instructions

Application table	Application	Dilution
	IHC-P	5 - 20 µg/ml
	WB	1 - 2 µg/ml
Application Note	* The dilutions indicate recommended starting dilutions and the optimal dilutions or concentrations should be determined by the scientist.	
Positive Control	Human lung and Human kidney	
Observed Size	23 kDa	

Properties

Form	Liquid
Purification	Affinity purification with immunogen.
Buffer	PBS and 0.02% Sodium azide
Preservative	0.02% Sodium azide
Concentration	1 mg/ml
Storage instruction	For continuous use, store undiluted antibody at 2-8°C for up to a week. For long-term storage, aliquot and store at -20°C or below. Storage in frost free freezers is not recommended. Avoid repeated

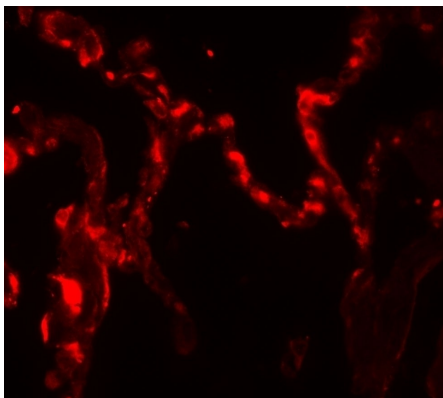
freeze/thaw cycles. Suggest spin the vial prior to opening. The antibody solution should be gently mixed before use.

Note For laboratory research only, not for drug, diagnostic or other use.

Bioinformation

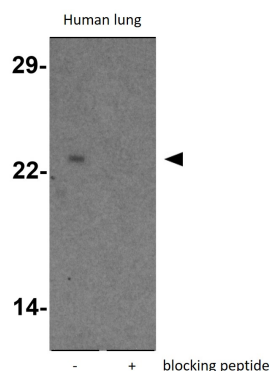
Gene Symbol	IL37
Gene Full Name	interleukin 37
Background	The protein encoded by this gene is a member of the interleukin 1 cytokine family. This cytokine can bind to, and may be a ligand for interleukin 18 receptor (IL18R1/IL-1Rrp). This cytokine also binds to interleukin 18 binding protein (IL18BP), an inhibitory binding protein of interleukin 18 (IL18), and subsequently forms a complex with IL18 receptor beta subunit, and through which it inhibits the activity of IL18. This gene along with eight other interleukin 1 family genes form a cytokine gene cluster on chromosome 2. Five alternatively spliced transcript variants encoding distinct isoforms have been reported. [provided by RefSeq, Jul 2008]
Function	Suppressor of innate inflammatory and immune responses involved in curbing excessive inflammation. This function requires SMAD3. Suppresses, or reduces, proinflammatory cytokine production, including IL1A and IL6, as well as CCL12, CSF1, CSF2, CXCL13, IL1B, IL23A and IL1RN, but spares anti-inflammatory cytokines. Inhibits dendritic cell activation. [UniProt]
Calculated Mw	24 kDa
PTM	Proteolytically converted to the mature form by CASP1. [UniProt]
Cellular Localization	Cytoplasm, cytosol. Nucleus. Secreted. Note=Stimulation with IL1B leads to colocalization with SMAD3 mostly in perinuclear regions (PubMed:20935647). Only the CASP1-cleaved mature form translocates into the nucleus upon LPS stimulation (PubMed:18390730). [UniProt]

Images



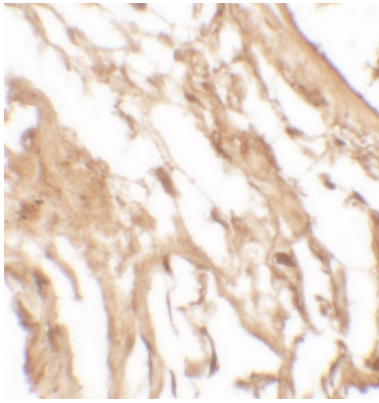
ARG40177 anti-IL37 / IL1F7 / FIL1 zeta antibody IHC-P image

Immunohistochemistry: Paraffin-embedded Human kidney tissue stained with ARG40177 anti-IL37 / IL1F7 / FIL1 zeta antibody at 20 µg/ml dilution.



ARG40177 anti-IL37 / IL1F7 / FIL1 zeta antibody WB image

Western blot: Human lung lysates stained with ARG40177 anti-IL37 / IL1F7 / FIL1 zeta antibody at 1 µg/ml dilution in the absence (left) and the presence (right) of blocking peptide.



ARG40177 anti-IL37 / IL1F7 / FIL1 zeta antibody IHC-P image

Immunohistochemistry: Paraffin-embedded Human kidney tissue stained with ARG40177 anti-IL37 / IL1F7 / FIL1 zeta antibody at 5 µg/ml dilution.