

## ARG40135 anti-CANT1 antibody

Package: 100 µl  
Store at: -20°C

### Summary

Product Description	Rabbit Polyclonal antibody recognizes CANT1
Tested Reactivity	Hu
Tested Application	FACS, WB
Host	Rabbit
Clonality	Polyclonal
Isotype	IgG
Target Name	CANT1
Species	Human
Immunogen	KLH-conjugated synthetic peptide corresponding to aa. 1-30 of Human CANT1.
Conjugation	Un-conjugated
Alternate Names	Apyrase homolog; Soluble calcium-activated nucleotidase 1; EC 3.6.1.6; Putative MAPK-activating protein PM09; DBQD; SHAPY; Putative NF-kappa-B-activating protein 107; SCAN-1; SCAN1

### Application Instructions

Application table	Application	Dilution
	FACS	1:10 - 1:50
	WB	1:1000
Application Note	* The dilutions indicate recommended starting dilutions and the optimal dilutions or concentrations should be determined by the scientist.	
Positive Control	Jurkat	

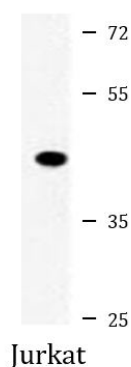
### Properties

Form	Liquid
Purification	Purification with Protein A and immunogen peptide.
Buffer	PBS and 0.09% (W/V) Sodium azide.
Preservative	0.09% (W/V) Sodium azide.
Storage instruction	For continuous use, store undiluted antibody at 2-8°C for up to a week. For long-term storage, aliquot and store at -20°C or below. Storage in frost free freezers is not recommended. Avoid repeated freeze/thaw cycles. Suggest spin the vial prior to opening. The antibody solution should be gently mixed before use.
Note	For laboratory research only, not for drug, diagnostic or other use.

## Bioinformation

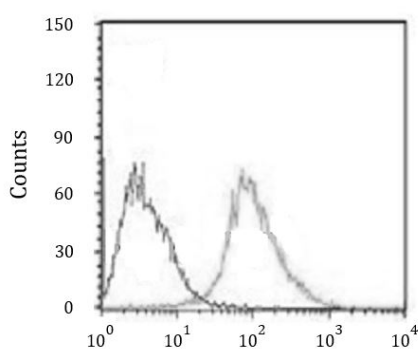
Gene Symbol	CANT1
Gene Full Name	calcium activated nucleotidase 1
Background	This protein encoded by this gene belongs to the apyrase family. It functions as a calcium-dependent nucleotidase with a preference for UDP. Mutations in this gene are associated with Desbuquois dysplasia with hand anomalies. Alternatively spliced transcript variants have been noted for this gene.[provided by RefSeq, Mar 2010]
Function	Calcium-dependent nucleotidase with a preference for UDP. The order of activity with different substrates is UDP > GDP > UTP > GTP. Has very low activity towards ADP and even lower activity towards ATP. Does not hydrolyze AMP and GMP. Involved in proteoglycan synthesis. [UniProt]
Calculated Mw	45 kDa
PTM	N-glycosylated. [UniProt]
Cellular Localization	Endoplasmic reticulum membrane; Single-pass type II membrane protein. Golgi apparatus, Golgi stack membrane; Single-pass type II membrane protein. Cell membrane. Note=Processed form: Secreted. [UniProt]

## Images



ARG40135 anti-CANT1 antibody WB image

Western blot: 35 µg of Jurkat cell lysate stained with ARG40135 anti-CANT1 antibody.



ARG40135 anti-CANT1 antibody FACS image

Flow Cytometry: Jurkat cells stained with ARG40135 anti-CANT1 antibody (right histogram) or without primary antibody as control (left histogram), followed by incubation with FITC labelled secondary antibody.