

ARG40131 anti-Transaldolase 1 antibody

Package: 100 µl
Store at: -20°C

Summary

Product Description	Rabbit Polyclonal antibody recognizes Transaldolase 1
Tested Reactivity	Hu
Tested Application	FACS, IHC-P, WB
Host	Rabbit
Clonality	Polyclonal
Isotype	IgG
Target Name	Transaldolase 1
Species	Human
Immunogen	KLH-conjugated synthetic peptide corresponding to aa. 186-215 of Human Transaldolase 1.
Conjugation	Un-conjugated
Alternate Names	TALDOR; EC 2.2.1.2; TAL; TAL-H; TALH; Transaldolase

Application Instructions

Application table	Application	Dilution
	FACS	1:10 - 1:50
	IHC-P	1:50 - 1:100
	WB	1:1000
Application Note	* The dilutions indicate recommended starting dilutions and the optimal dilutions or concentrations should be determined by the scientist.	
Positive Control	A375	

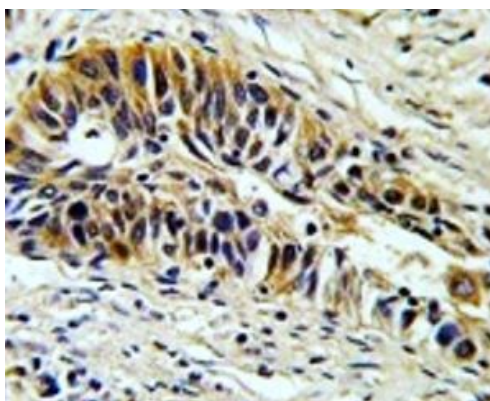
Properties

Form	Liquid
Purification	Saturated Ammonium Sulfate (SAS) precipitation followed by dialysis against PBS.
Buffer	PBS and 0.09% (W/V) Sodium azide.
Preservative	0.09% (W/V) Sodium azide.
Storage instruction	For continuous use, store undiluted antibody at 2-8°C for up to a week. For long-term storage, aliquot and store at -20°C or below. Storage in frost free freezers is not recommended. Avoid repeated freeze/thaw cycles. Suggest spin the vial prior to opening. The antibody solution should be gently mixed before use.
Note	For laboratory research only, not for drug, diagnostic or other use.

Bioinformation

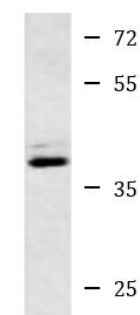
Gene Symbol	TALDO1
Gene Full Name	transaldolase 1
Background	Transaldolase 1 is a key enzyme of the nonoxidative pentose phosphate pathway providing ribose-5-phosphate for nucleic acid synthesis and NADPH for lipid biosynthesis. This pathway can also maintain glutathione at a reduced state and thus protect sulfhydryl groups and cellular integrity from oxygen radicals. The functional gene of transaldolase 1 is located on chromosome 11 and a pseudogene is identified on chromosome 1 but there are conflicting map locations. The second and third exon of this gene were developed by insertion of a retrotransposable element. This gene is thought to be involved in multiple sclerosis. [provided by RefSeq, Jul 2008]
Function	Transaldolase is important for the balance of metabolites in the pentose-phosphate pathway. [UniProt]
Highlight	Related news: Disulfidoptosis markers:
Calculated Mw	38 kDa
Cellular Localization	Cytoplasm. [UniProt]

Images



ARG40131 anti-Transaldolase 1 antibody IHC-P image

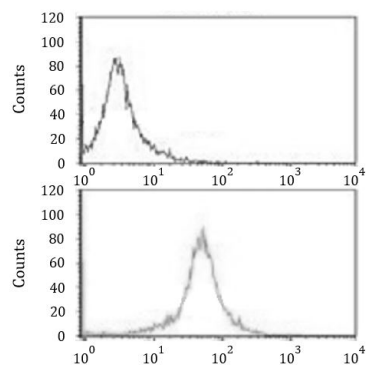
Immunohistochemistry: Formalin-fixed and paraffin-embedded Human lung carcinoma stained with ARG40131 anti-Transaldolase 1 antibody.



A375

ARG40131 anti-Transaldolase 1 antibody WB image

Western blot: 35 µg of A375 cell lysate stained with ARG40131 anti-Transaldolase 1 antibody.



ARG40131 anti-Transaldolase 1 antibody FACS image

Flow Cytometry: K562 cells stained with ARG40131 anti-Transaldolase 1 antibody (bottom histogram) or without primary antibody as control (top histogram), followed by incubation with FITC labelled secondary antibody.