

ARG40109 anti-STC1 / Stanniocalcin 1 antibody

Package: 100 µl
Store at: -20°C

Summary

Product Description	Rabbit Polyclonal antibody recognizes STC1 / Stanniocalcin 1
Tested Reactivity	Ms, Rat
Tested Application	WB
Host	Rabbit
Clonality	Polyclonal
Isotype	IgG
Target Name	STC1 / Stanniocalcin 1
Species	Human
Immunogen	Recombinant protein of Human STC1.
Conjugation	Un-conjugated
Alternate Names	Stanniocalcin-1; STC-1; STC

Application Instructions

Application table	<table> <tr> <th>Application</th><th>Dilution</th></tr> <tr> <td>WB</td><td>1:1000 - 1:2000</td></tr> </table>	Application	Dilution	WB	1:1000 - 1:2000
Application	Dilution				
WB	1:1000 - 1:2000				
Application Note	* The dilutions indicate recommended starting dilutions and the optimal dilutions or concentrations should be determined by the scientist.				
Positive Control	Rat kidney and Mouse kidney				
Observed Size	~ 28 kDa				

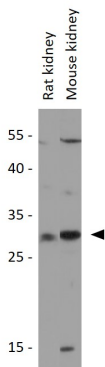
Properties

Form	Liquid
Purification	Affinity purified.
Buffer	PBS (pH 7.3), 0.02% Sodium azide and 50% Glycerol.
Preservative	0.02% Sodium azide
Stabilizer	50% Glycerol
Storage instruction	For continuous use, store undiluted antibody at 2-8°C for up to a week. For long-term storage, aliquot and store at -20°C. Storage in frost free freezers is not recommended. Avoid repeated freeze/thaw cycles. Suggest spin the vial prior to opening. The antibody solution should be gently mixed before use.
Note	For laboratory research only, not for drug, diagnostic or other use.

Bioinformation

Gene Symbol	STC1
Gene Full Name	stanniocalcin 1
Background	This gene encodes a secreted, homodimeric glycoprotein that is expressed in a wide variety of tissues and may have autocrine or paracrine functions. The gene contains a 5' UTR rich in CAG trinucleotide repeats. The encoded protein contains 11 conserved cysteine residues and is phosphorylated by protein kinase C exclusively on its serine residues. The protein may play a role in the regulation of renal and intestinal calcium and phosphate transport, cell metabolism, or cellular calcium/phosphate homeostasis. Overexpression of human stanniocalcin 1 in mice produces high serum phosphate levels, dwarfism, and increased metabolic rate. This gene has altered expression in hepatocellular, ovarian, and breast cancers. [provided by RefSeq, Jul 2008]
Function	Stimulates renal phosphate reabsorption, and could therefore prevent hypercalcemia. [UniProt]
Calculated Mw	28 kDa
Cellular Localization	Secreted. [UniProt]

Images



ARG40109 anti-STC1 / Stanniocalcin 1 antibody WB image

Western blot: 25 µg of Rat kidney and Mouse kidney lysates stained with ARG40109 anti-STC1 / Stanniocalcin 1 antibody at 1:1000 dilution.