

## ARG40105 anti-MRPS35 antibody

Package: 100 µl  
Store at: -20°C

### Summary

Product Description	Rabbit Polyclonal antibody recognizes MRPS35
Tested Reactivity	Hu, Ms
Tested Application	ICC/IF, IHC-P, WB
Host	Rabbit
Clonality	Polyclonal
Isotype	IgG
Target Name	MRPS35
Species	Human
Immunogen	Recombinant fusion protein corresponding to aa. 1-323 of Human MRPS35 (NP_068593.2).
Conjugation	Un-conjugated
Alternate Names	HDCMD11P; S28mt; MRPS28; MRP-S35; MDS023; 28S ribosomal protein S35, mitochondrial; S35mt; 28S ribosomal protein S28, mitochondrial; MRP-S28

### Application Instructions

Application table	Application	Dilution
	ICC/IF	1:50 - 1:200
	IHC-P	1:50 - 1:200
	WB	1:500 - 1:2000
Application Note	* The dilutions indicate recommended starting dilutions and the optimal dilutions or concentrations should be determined by the scientist.	
Positive Control	Mouse kidney and HT-29	
Observed Size	~ 38 kDa	

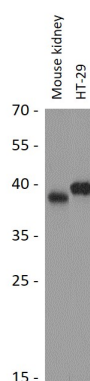
### Properties

Form	Liquid
Purification	Affinity purified.
Buffer	PBS (pH 7.3), 0.02% Sodium azide and 50% Glycerol.
Preservative	0.02% Sodium azide
Stabilizer	50% Glycerol
Storage instruction	For continuous use, store undiluted antibody at 2-8°C for up to a week. For long-term storage, aliquot and store at -20°C. Storage in frost free freezers is not recommended. Avoid repeated freeze/thaw cycles. Suggest spin the vial prior to opening. The antibody solution should be gently mixed before use.

## Bioinformation

Gene Symbol	MRPS35
Gene Full Name	mitochondrial ribosomal protein S35
Background	<p>Mammalian mitochondrial ribosomal proteins are encoded by nuclear genes and help in protein synthesis within the mitochondrion. Mitochondrial ribosomes (mitoribosomes) consist of a small 28S subunit and a large 39S subunit. They have an estimated 75% protein to rRNA composition compared to prokaryotic ribosomes, where this ratio is reversed. Another difference between mammalian mitoribosomes and prokaryotic ribosomes is that the latter contain a 5S rRNA. Among different species, the proteins comprising the mitoribosome differ greatly in sequence, and sometimes in biochemical properties, which prevents easy recognition by sequence homology. This gene encodes a 28S subunit protein that has had confusing nomenclature in the literature. Alternatively spliced transcript variants encoding different isoforms have been found for this gene. Pseudogenes corresponding to this gene are found on chromosomes 3p, 5q, and 10q. [provided by RefSeq, Jul 2010]</p>
Calculated Mw	37 kDa
Cellular Localization	Mitochondrion. [UniProt]

## Images



ARG40105 anti-MRPS35 antibody WB image

Western blot: 25 µg of Mouse kidney and HT-29 cell lysates stained with ARG40105 anti-MRPS35 antibody at 1:1000 dilution.