

## ARG40083 anti-G2E3 antibody

Package: 100 µl  
Store at: -20°C

### Summary

Product Description	Rabbit Polyclonal antibody recognizes G2E3
Tested Reactivity	Hu, Ms, Rat
Tested Application	WB
Host	Rabbit
Clonality	Polyclonal
Isotype	IgG
Target Name	G2E3
Species	Human
Immunogen	Recombinant fusion protein corresponding to aa. 1-180 of Human G2E3 (NP_060239.2).
Conjugation	Un-conjugated
Alternate Names	PHF7B; KIAA1333; EC 6.3.2.-; G2/M phase-specific E3 ubiquitin-protein ligase

### Application Instructions

Application table	Application	Dilution
	WB	1:500 - 1:2000
Application Note	* The dilutions indicate recommended starting dilutions and the optimal dilutions or concentrations should be determined by the scientist.	
Positive Control	Rat testis, Mouse liver and OVCAR3	
Observed Size	80 kDa	

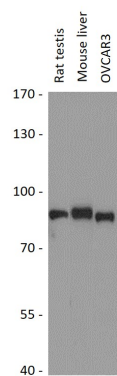
### Properties

Form	Liquid
Purification	Affinity purified.
Buffer	PBS (pH 7.3), 0.02% Sodium azide and 50% Glycerol.
Preservative	0.02% Sodium azide
Stabilizer	50% Glycerol
Storage instruction	For continuous use, store undiluted antibody at 2-8°C for up to a week. For long-term storage, aliquot and store at -20°C. Storage in frost free freezers is not recommended. Avoid repeated freeze/thaw cycles. Suggest spin the vial prior to opening. The antibody solution should be gently mixed before use.
Note	For laboratory research only, not for drug, diagnostic or other use.

Bioinformation

Gene Symbol	G2E3
Gene Full Name	G2/M-phase specific E3 ubiquitin protein ligase
Function	E3 ubiquitin-protein ligase which accepts ubiquitin from an E2 ubiquitin-conjugating enzyme in the form of a thioester and then directly transfers the ubiquitin to targeted substrates. Essential in early embryonic development to prevent apoptotic death. [UniProt]
Calculated Mw	81 kDa
Cellular Localization	Nucleus, nucleolus. Cytoplasm. Note=Shuttles between the nucleus and the cytoplasm. In the nucleus, delocalizes from the nucleolus to the nucleoplasm in response to DNA damage. [UniProt]

Images



ARG40083 anti-G2E3 antibody WB image

Western blot: 25 µg of Rat testis, Mouse liver and OVCAR3 cell lysates stained with ARG40083 anti-G2E3 antibody at 1:1000 dilution.