

**ARG40057**  
**anti-ASCC2 antibody**Package: 100 µl  
Store at: -20°C

### Summary

Product Description	Rabbit Polyclonal antibody recognizes ASCC2
Tested Reactivity	Hu, Ms, Rat
Tested Application	WB
Host	Rabbit
Clonality	Polyclonal
Isotype	IgG
Target Name	ASCC2
Species	Human
Immunogen	Recombinant fusion protein corresponding to aa. 488-757 of Human ASCC2 (NP_115580.2).
Conjugation	Un-conjugated
Alternate Names	Trip4 complex subunit p100; ASC1p100; Activating signal cointegrator 1 complex subunit 2; ASC-1 complex subunit p100; p100

### Application Instructions

Application table	Application	Dilution
	WB	1:500 - 1:2000
Application Note	* The dilutions indicate recommended starting dilutions and the optimal dilutions or concentrations should be determined by the scientist.	
Positive Control	Rat pancreas, Mouse eye and HepG2	
Observed Size	110 kDa	

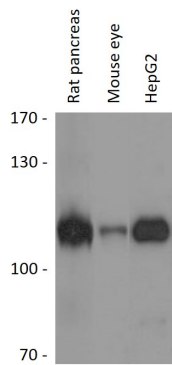
### Properties

Form	Liquid
Purification	Affinity purified.
Buffer	PBS (pH 7.3), 0.02% Sodium azide and 50% Glycerol.
Preservative	0.02% Sodium azide
Stabilizer	50% Glycerol
Storage instruction	For continuous use, store undiluted antibody at 2-8°C for up to a week. For long-term storage, aliquot and store at -20°C. Storage in frost free freezers is not recommended. Avoid repeated freeze/thaw cycles. Suggest spin the vial prior to opening. The antibody solution should be gently mixed before use.
Note	For laboratory research only, not for drug, diagnostic or other use.

Bioinformation

Gene Symbol	ASCC2
Gene Full Name	activating signal cointegrator 1 complex subunit 2
Function	Enhances NF-kappa-B, SRF and AP1 transactivation. [UniProt]
Calculated Mw	86 kDa
Cellular Localization	Nucleus. [UniProt]

Images



ARG40057 anti-ASCC2 antibody WB image

Western blot: 25 µg of Rat pancreas, Mouse eye and HepG2 cell lysates stained with ARG40057 anti-ASCC2 antibody at 1:3000 dilution.