

ARG30332 NLRC4 Inflammasome Antibody Panel

Package: 1 kit
Store at: -20°C

Component

Cat. No.	Component Name	Host clonality	Reactivity	Application	Package
ARG59418	anti-NLRC4 / CARD12 antibody	Rabbit pAb	Hu, Ms	ICC/IF, IHC-P, WB	20 µl
ARG66211	anti-ASC / TMS1 antibody	Rabbit pAb	Hu, Ms	WB	20 µl
ARG57293	anti-Caspase 1 antibody	Rabbit pAb	Hu, Ms	ICC/IF, IHC-P, IP, WB	20 µl
ARG10112	anti-GAPDH antibody [6C5]	Mouse mAb	Hu, Ms, Rat, AGMK, Bb, Cat, Chk, Dog, Fsh, Hm, Mk, Pig, Rb, Xenopus laevis, Zfsh	ELISA, ICC/IF, IHC-Fr, WB	20 µg

Summary

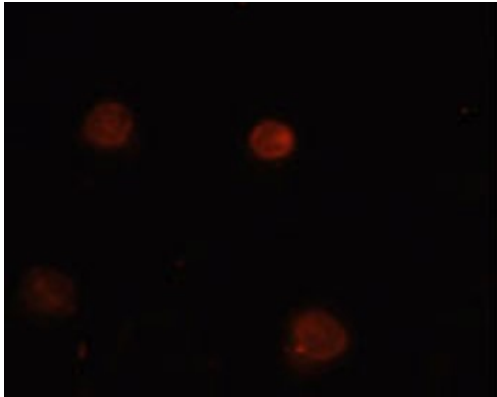
Product Description	NLRC4 Inflammasome Antibody Panel is an all-in-one solution to make the research of NLRC4 inflammasome easy and economic. This antibody panel comprises antibodies against the key components of NLRC4 inflammasome including NLRC4, ASC, and Caspase-1. Moreover, a loading control antibody against GAPDH is also included. This panel is the best solution for studying NLRC4 Inflammasome.
Target Name	NLRC4 Inflammasome
Alternate Names	NLRC4 Inflammasome antibody; GAPDH antibody; Caspase 1 antibody; NLRC4 / CARD12 antibody; ASC / TMS1 antibody

Properties

Storage instruction	For continuous use, store undiluted antibody at 2-8°C for up to a week. For long-term storage, aliquot and store at -20°C or below. Storage in frost free freezers is not recommended. Avoid repeated freeze/thaw cycles. Suggest spin the vial prior to opening. The antibody solution should be gently mixed before use.
Note	For laboratory research only, not for drug, diagnostic or other use.

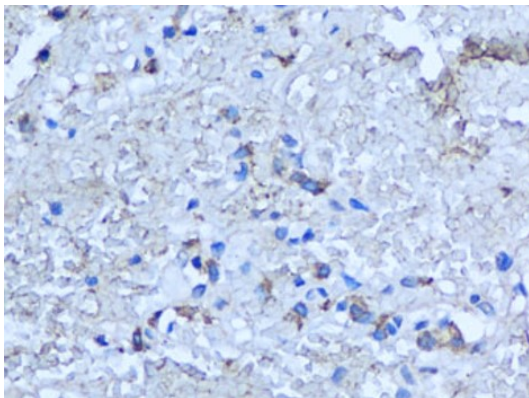
Bioinformation

Gene Full Name	Antibody Panel for NLRC4 Inflammasome
Highlight	Related news: Inflammasome & Pyroptosis Antibody Panels are released Exploring Antiviral Immune Response AMPK signaling regulates NLRP3 inflammation and pyroptosis



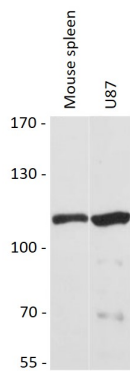
ARG59418 anti-NLRC4 / CARD12 antibody ICC/IF image

Immunofluorescence: THP-1 cells stained with ARG59418 anti-NLRC4 / CARD12 antibody (red).



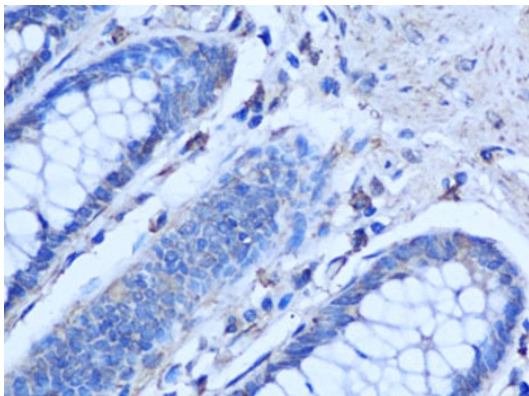
ARG59418 anti-NLRC4 / CARD12 antibody IHC-P image

Immunohistochemistry: Paraffin-embedded Human lung stained with ARG59418 anti-NLRC4 / CARD12 antibody at 1:100 dilution (40x lens).



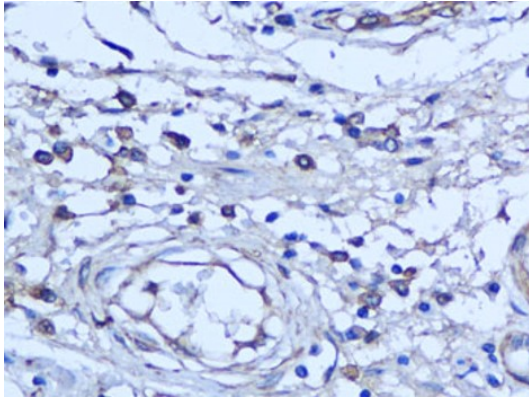
ARG59418 anti-NLRC4 / CARD12 antibody WB image

Western blot: 25 µg of Mouse spleen and U87 cell lysate stained with ARG59418 anti-NLRC4 / CARD12 antibody at 1:3000 dilution.



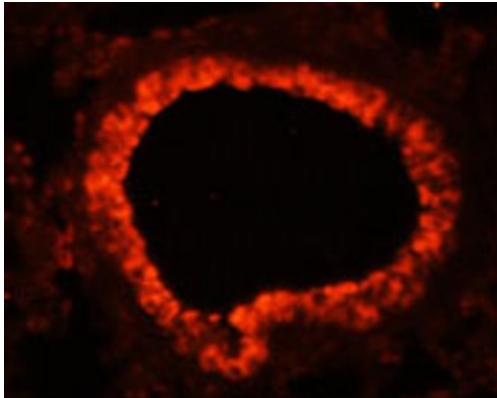
ARG59418 anti-NLRC4 / CARD12 antibody IHC-P image

Immunohistochemistry: Paraffin-embedded Human colon stained with ARG59418 anti-NLRC4 / CARD12 antibody at 1:100 dilution (40x lens).



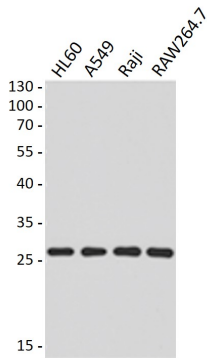
ARG59418 anti-NLRC4 / CARD12 antibody IHC-P image

Immunohistochemistry: Paraffin-embedded Human gastric stained with ARG59418 anti-NLRC4 / CARD12 antibody at 1:100 dilution (40x lens).



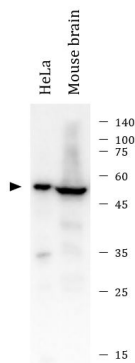
ARG59418 anti-NLRC4 / CARD12 antibody IHC-P image

Immunohistochemistry: Mouse lung stained with ARG59418 anti-NLRC4 / CARD12 antibody (orange-red).



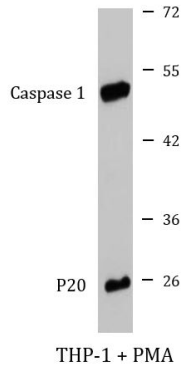
ARG66211 anti-ASC / TMS1 antibody WB image

Western blot: 40 μ g of HL60, A549, Raji and RAW264.7 cell lysates stained with ARG66211 anti-ASC / TMS1 antibody at 1:500 dilution.



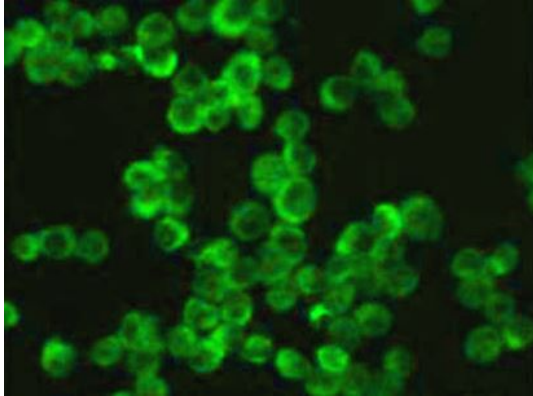
ARG57293 anti-Caspase 1 antibody WB image

Western blot: 10 μ g of HeLa and 20 μ g of Mouse brain lysates stained with ARG57293 anti-Caspase 1 antibody at 1:1000 dilution.



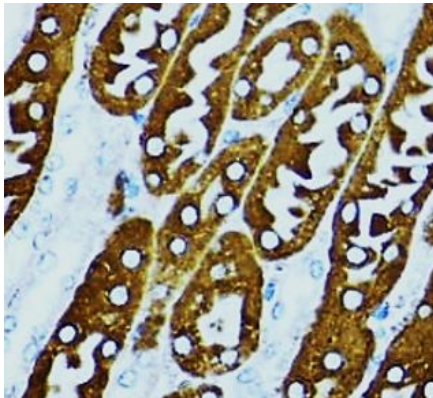
ARG57293 anti-Caspase 1 antibody WB image

Western blot: 25 μ g of cell lysate from PMA treated THP-1 cells were stained with ARG57293 anti-Caspase 1 antibody at 1:1000 dilution.



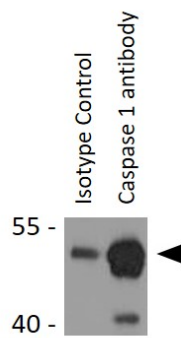
ARG57293 anti-Caspase 1 antibody ICC/IF image

Immunofluorescence: Raw264.7 cells stained with ARG57293 anti-Caspase 1 antibody at 1:1000 dilution.



ARG57293 anti-Caspase 1 antibody IHC-P image

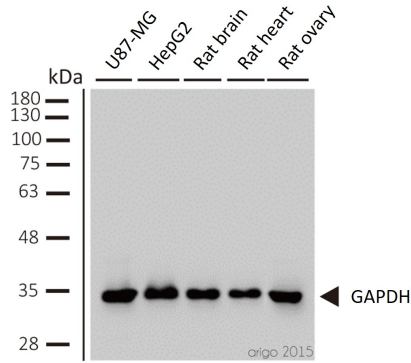
Immunohistochemistry: Paraffin-embedded Mouse kidney tissue stained with ARG57293 anti-Caspase 1 antibody at 1:100 dilution.



ARG57293 anti-Caspase 1 antibody IP image

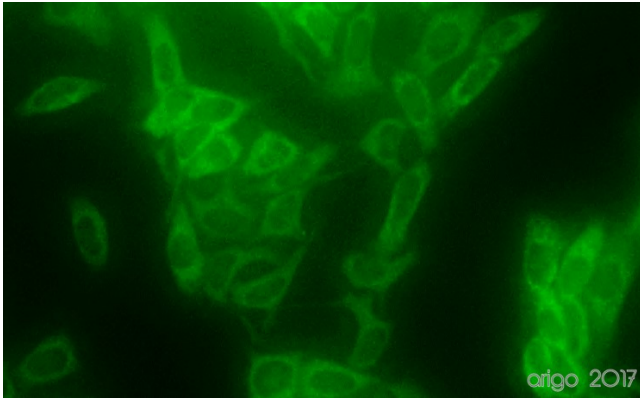
Immunoprecipitation: 200 μ g extracts of THP-1 cells
Immunoprecipitated and stained with ARG57293 anti-Caspase 1 antibody at 1:1000 dilution.

ARG10112 anti-GAPDH antibody [6C5] WB image



Western blot: 1) U87-MG 2) HepG2 3) rat brain 4) rat heart 5) rat ovary stained with ARG10112 anti-GAPDH antibody [6C5] at 1:2000 dilution.

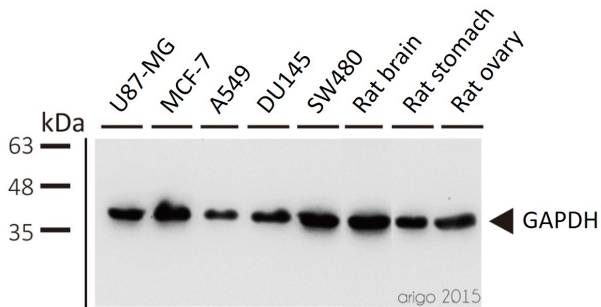
ARG10112 anti-GAPDH antibody [6C5] ICC/IF image



Immunofluorescence: 100% Methanol fixed (RT, 10 min) HeLa cells stained with ARG10112 anti-GAPDH antibody [6C5] (green) at 1:200 dilution.

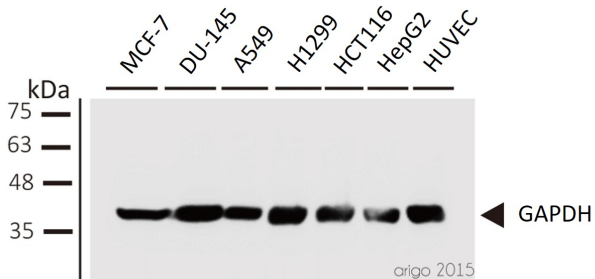
Secondary antibody: [ARG55393](#) Goat anti-Mouse IgG (H+L) antibody (FITC)

ARG10112 anti-GAPDH antibody [6C5] WB image



Western blot: 1) U87-MG 2) MCF-7 3) A549 4) DU145 5) SW480 6) rat brain 7) rat stomach 8) rat ovary stained with ARG10112 anti-GAPDH antibody [6C5] at 1:5000 dilution.

ARG10112 anti-GAPDH antibody [6C5] WB image



Western blot: 1) MCF-7 2) DU-145 3) A549 4) H1299 5) HCT116 6) HepG2 7) HUVEC stained with ARG10112 anti-GAPDH antibody [6C5] at 1:1000 dilution.